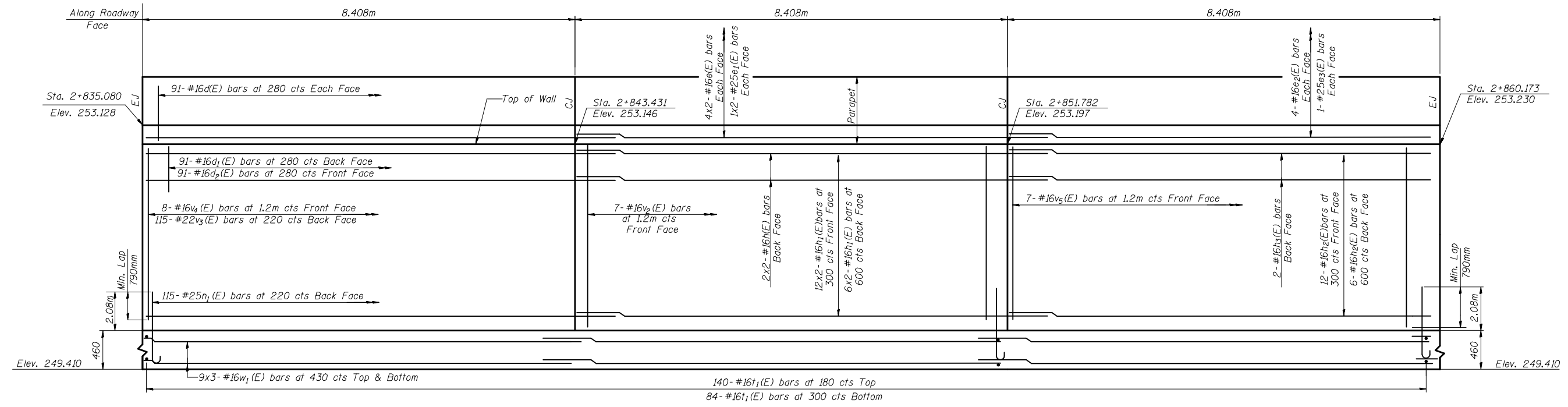


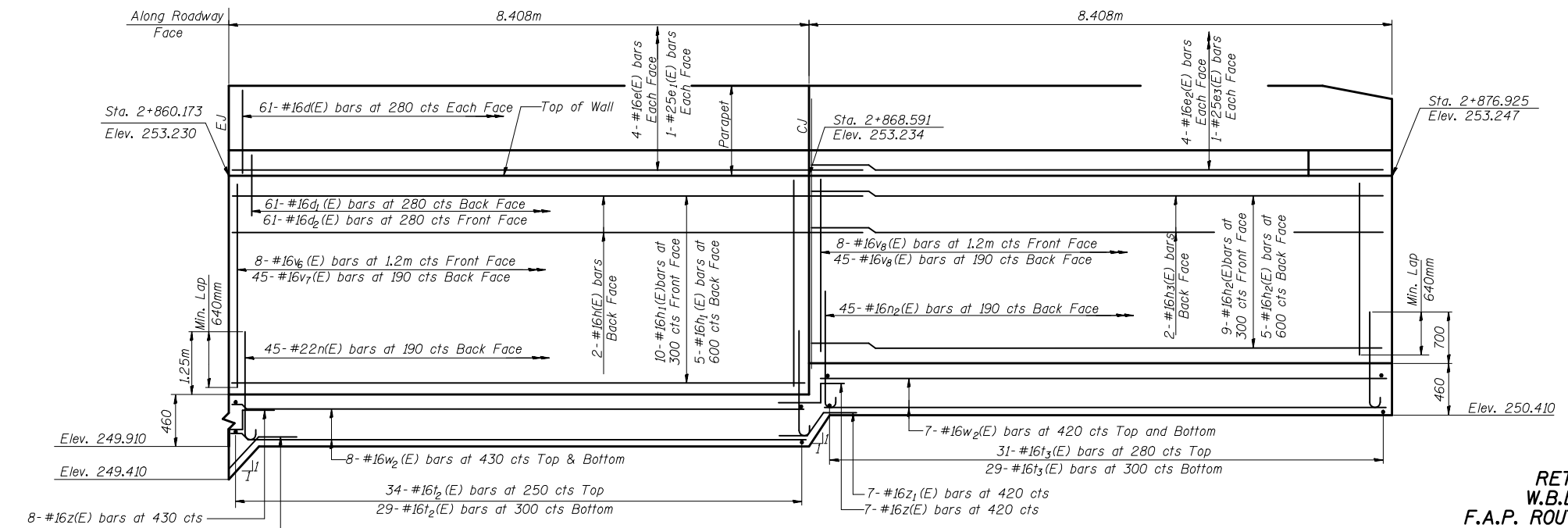
STATE OF ILLINOIS  
DEPARTMENT OF TRANSPORTATION

ROUTE NO.	SECTION	COUNTY	DATE	SHEET	SHEET NO. 3
F.A.P. 704	CDI	McLEAN	497	283	7 SHEETS
FED. ROAD DIST. NO.	ILLINOIS	FED. AID PROJECT			

CONTRACT NO. 70514



STATION 2+835.080 TO 2+860.173



NOTE: CJ and EJ denote Construction Joint and Expansion Joint respectively

STATION 2+860.125 TO 2+876.925



DESIGNED	Jda
CHECKED	WCT
DRAWN	mac
CHECKED	WCT

DATE: 06-25-10

ELEVATION  
RETAINING WALL ALONG  
W.B.L. VETERANS PARKWAY  
F.A.P. ROUTE 704 SECTION (D) N&TS-1  
McLEAN COUNTY  
STATION 2+785.000 TO 2+877.000  
STRUCTURE NO. 057-W002