

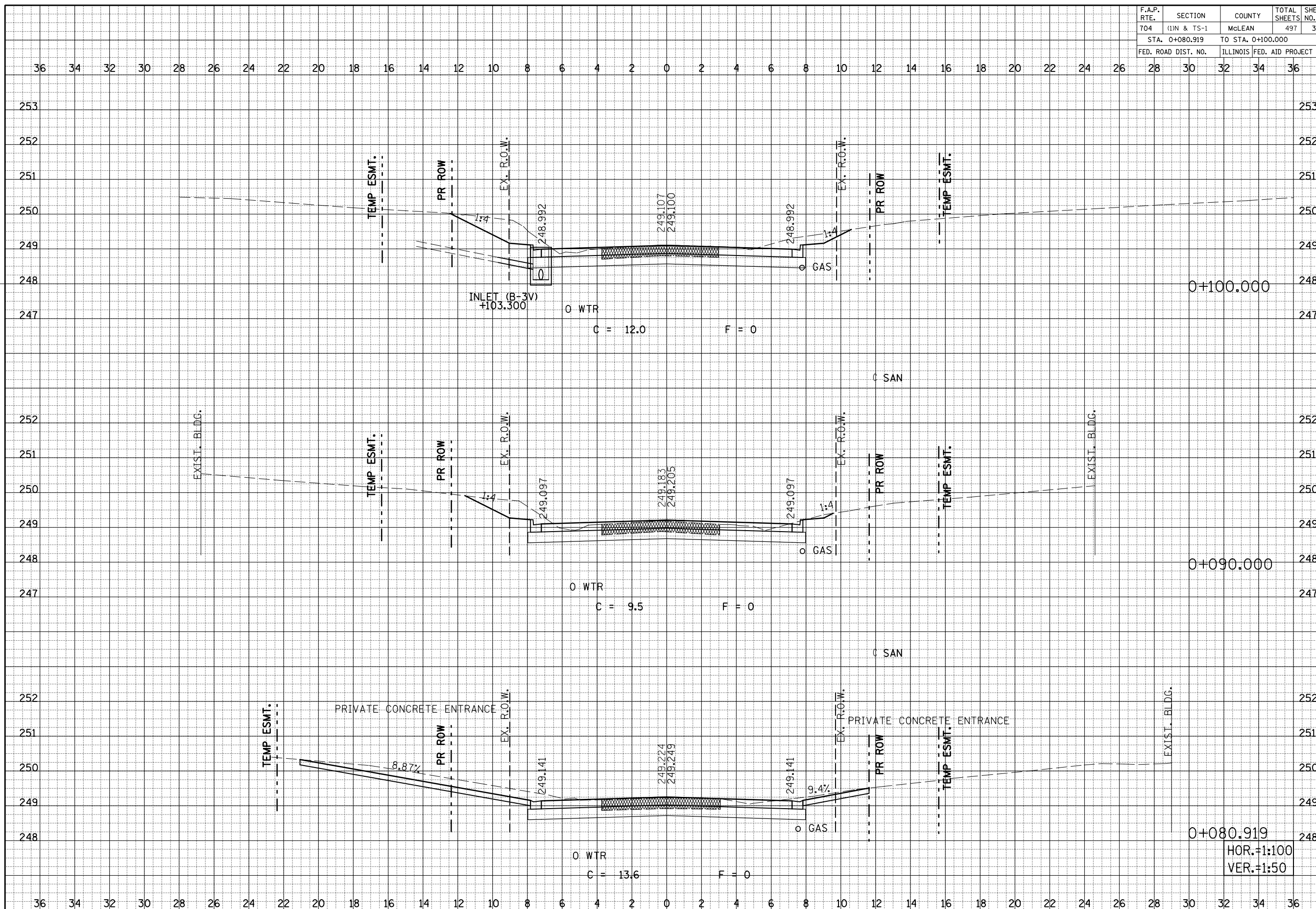
F.A.P. RTE.	SECTION	COUNTY	TOTAL SHEETS	SHEET NO.
704	(11N & TS-1	MCLEAN	497	386
STA. 0+080.919		TO STA. 0+100.000		
FED. ROAD DIST. NO.		ILLINOIS FED. AID PROJECT		

BY	DATE

FINAL SURVEY NOTE BOOK NO.	SURVEYED PLOTTED AREAS	PLANNED AREAS	CHECKED AREAS

BY	DATE

ORIGINAL SURVEY NOTE BOOK NO.	SURVEYED PLOTTED AREAS	PLANNED AREAS	CHECKED AREAS



SIX POINTS ROAD CROSS SECTIONS, STA. 0+080.919 TO STA. 0+100.000

HOR.=1:100
VER.=1:50