

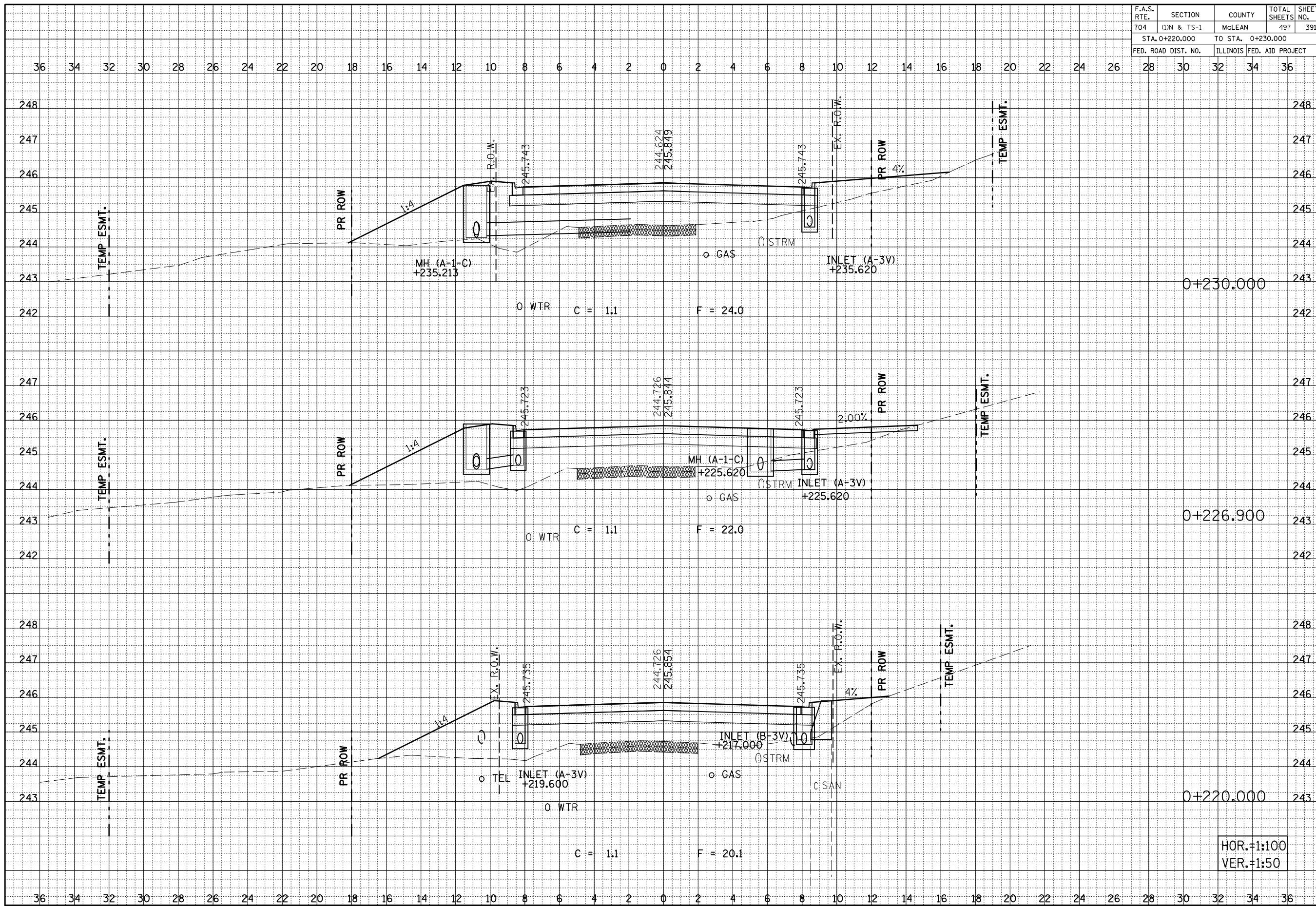
F.A.S. RTE.	SECTION	COUNTY	TOTAL SHEETS	SHEET NO.
704	(1)N & TS-1	MCLEAN	497	391
STA. 0+220.000		TO STA. 0+230.000		
FED. ROAD DIST. NO.		ILLINOIS FED. AID PROJECT		

BY	DATE

FINAL SURVEY	SURVEYED	PLOTTED	DATE

BY	DATE

ORIGINAL SURVEY	SURVEYED	PLOTTED	DATE



HOR.=1:100
VER.=1:50

SIX POINTS ROAD CROSS SECTIONS, STA. 0+220.000 TO STA. 0+230.000