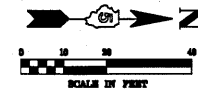
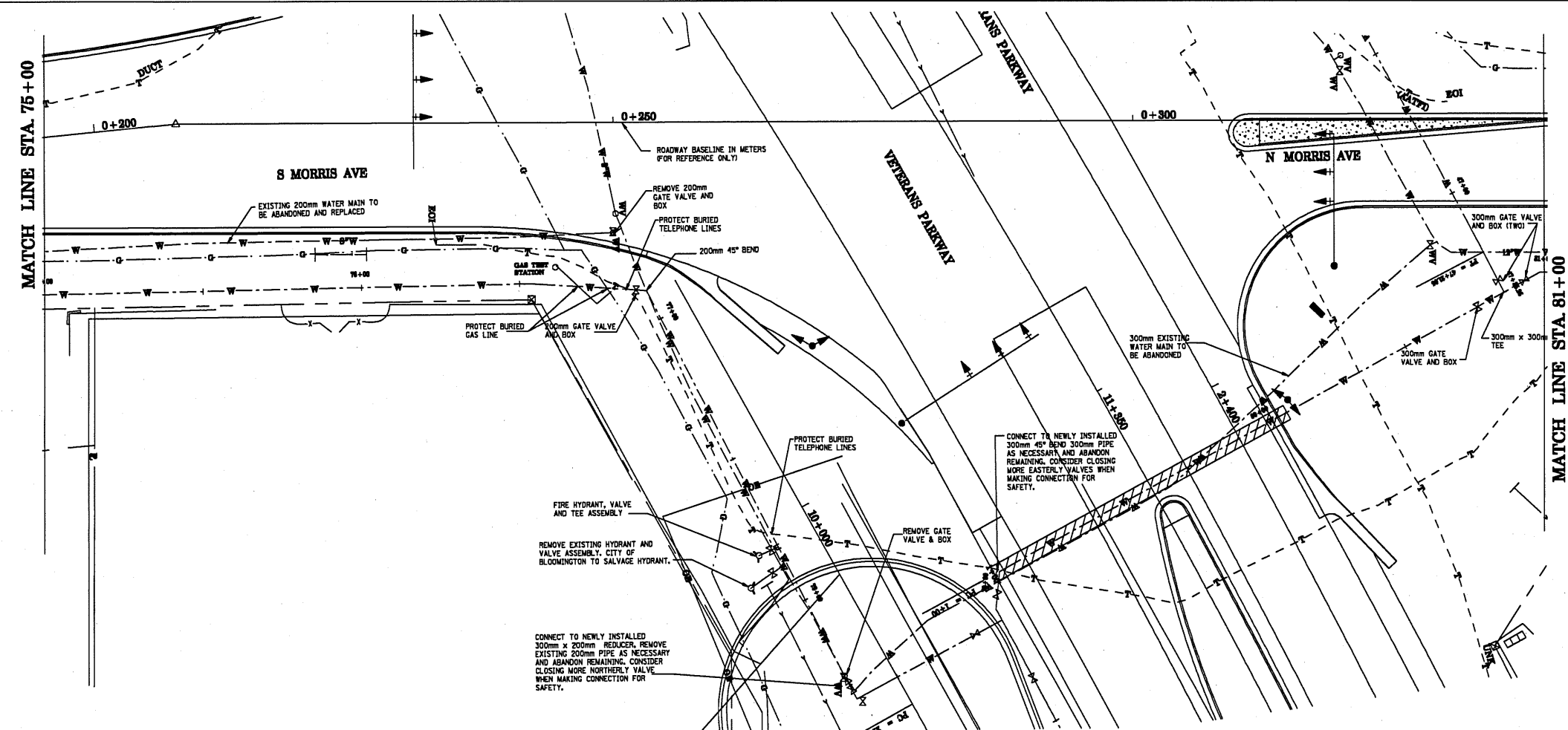


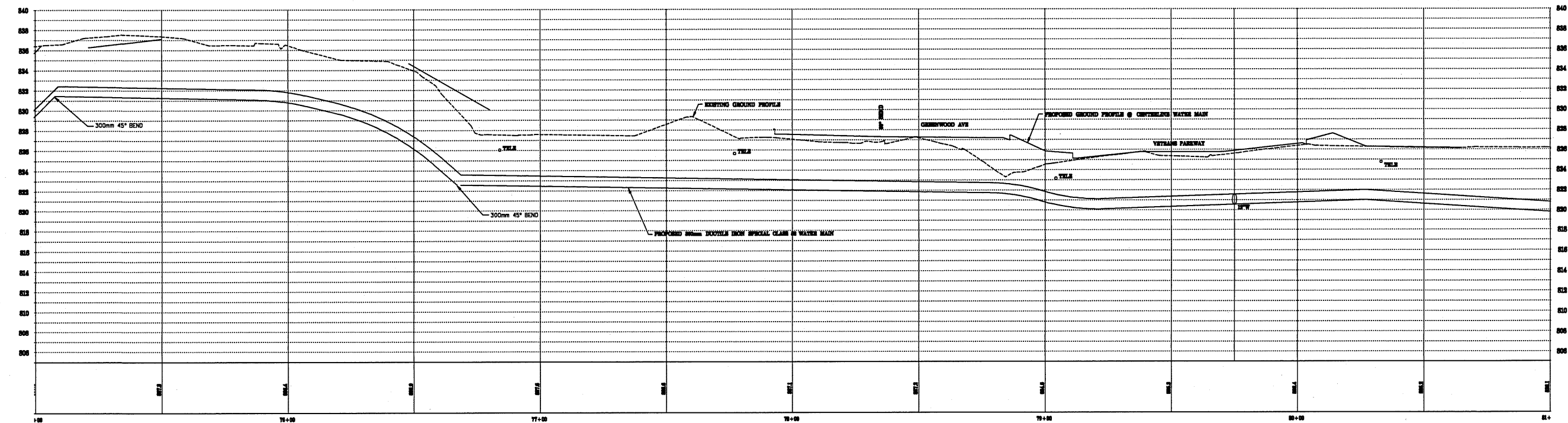
F.A.P. RTE.	SECTION	COUNTY	TOTAL SHEETS	SHEET NO.
704	(1)N & TS-1	McLEAN	497	492
STA. 0+200.000		TO STA. 0+350.000		
FED. ROAD DIST. NO. -		ILLINOIS FED. AID PROJECT		
CONTRACT NO. 70514				



DATE	
BY	
FINAL SURVEY PLOTTED	
NOTE BOOK TEMPLATE AREAS CHECKED	
NO.	



DATE	
BY	
ORIGINAL SURVEY PLOTTED	
NOTE BOOK TEMPLATE AREAS CHECKED	
NO.	



MORRIS AVE. WATER MAIN, STA. 75+00 TO STA. 81+00