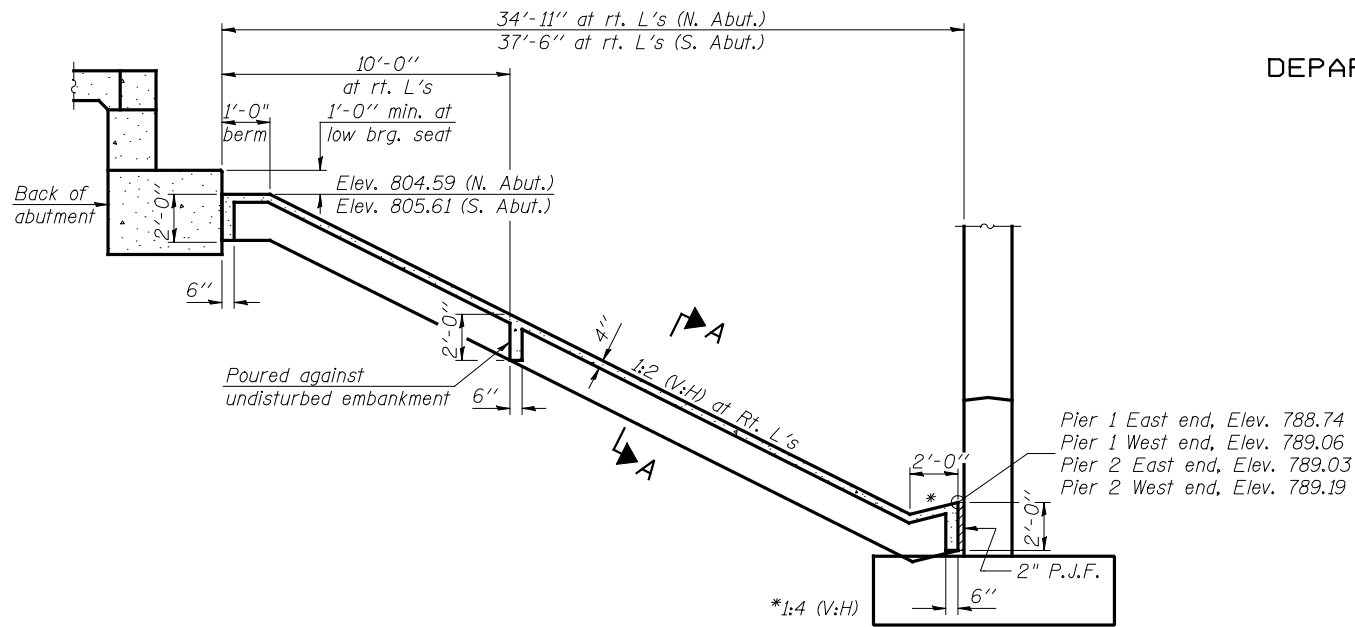
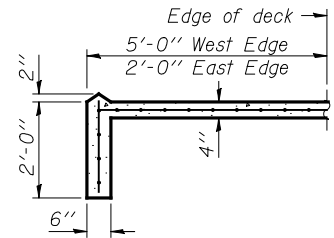


STATE OF ILLINOIS
DEPARTMENT OF TRANSPORTATION



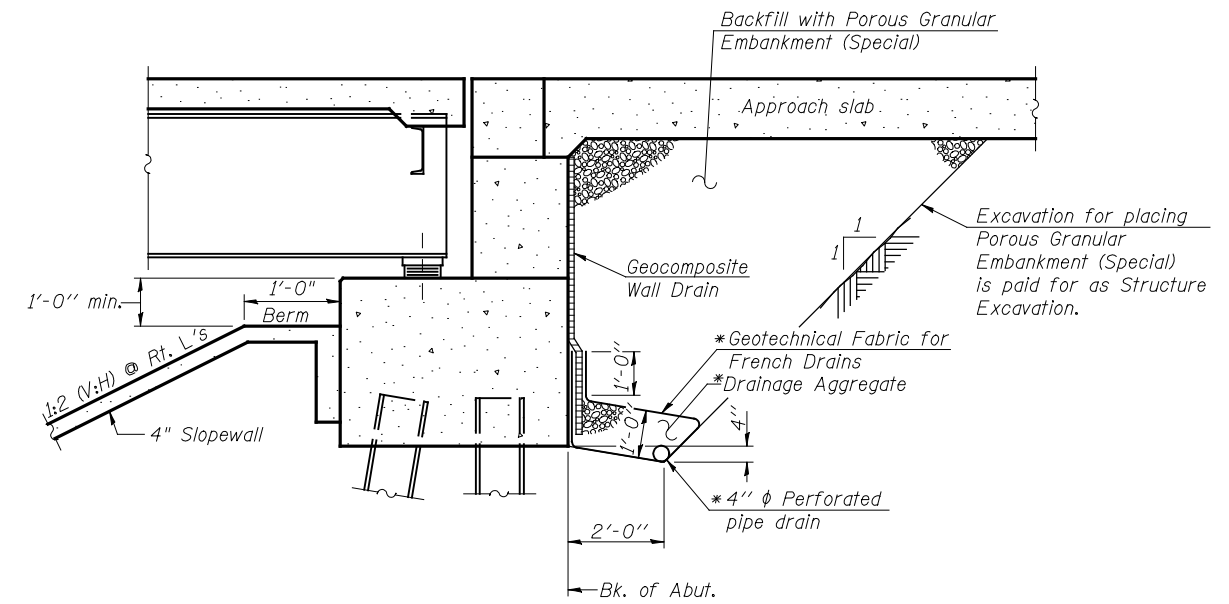
**SECTION THRU
CONCRETE SLOPEWALL**



SECTION A-A

Note:
Sloped wall shall be reinforced with welded wire fabric, 6" x 6" - W4.0 x W4.0, weighing 58 lbs. per 100 sq. ft.

Pier 1 East end, Elev. 788.74
Pier 1 West end, Elev. 789.06
Pier 2 East end, Elev. 789.03
Pier 2 West end, Elev. 789.19

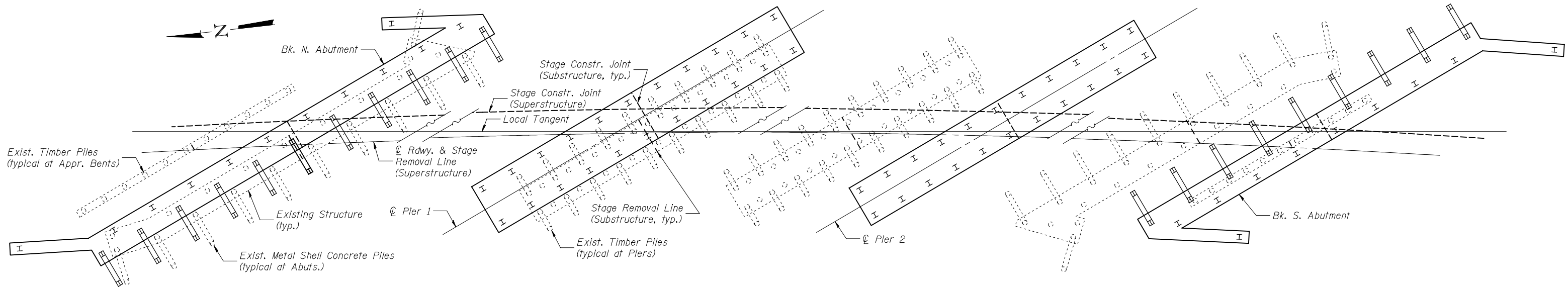


**SECTION THRU PILE SUPPORTED
STUB ABUTMENT**

(Horiz. dim. @ Rt. L's)

*Included in the cost of Pipe Underdrains for Structures.

Note:
All drainage system components shall extend parallel to the abutment back wall until they intersect the wingwalls or 2'-0" from the end of the wingwalls when the wings are parallel to the abutment. The pipe shall extend under the wingwall, if necessary, until intersecting the side slopes. The pipes shall drain into concrete headwalls. (See Article 601.05 of the Standard Specifications and Highway Standard 601101).



FOUNDATION LAYOUT

Notes:
Layout shows relative position of existing and proposed footings and piles.
Location of proposed piles may be adjusted (up to 1 foot ±) to avoid conflict with existing piles.

JD Johnson, Depp & Quisenberry
CONSULTING ENGINEERS
Springfield, Illinois

DESIGNED: DCD	DRAWN: SJS/PTR
CHECKED: CMV	CHECKED: DCD/CMV

**MISCELLANEOUS DETAILS
STRUCTURE NO. 057-0250**

SHEET 2 OF 27	F.A.I. RTE.	SECTION	COUNTY	TOTAL SHEETS	SHEET NO.
	55	(57-7HB-1)BR	MCLEAN	153	52
STA. 626+53.70			CONTRACT NO. 70520		
FED. ROAD DIST. NO. ILLINOIS FED. AID PROJECT					