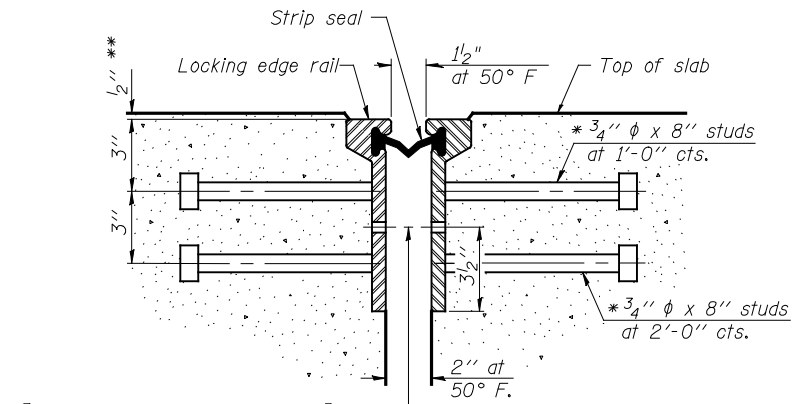


\* Granular or solid flux filled headed studs conforming to Article 1006.32 of the Std. Specs., automatically end welded.

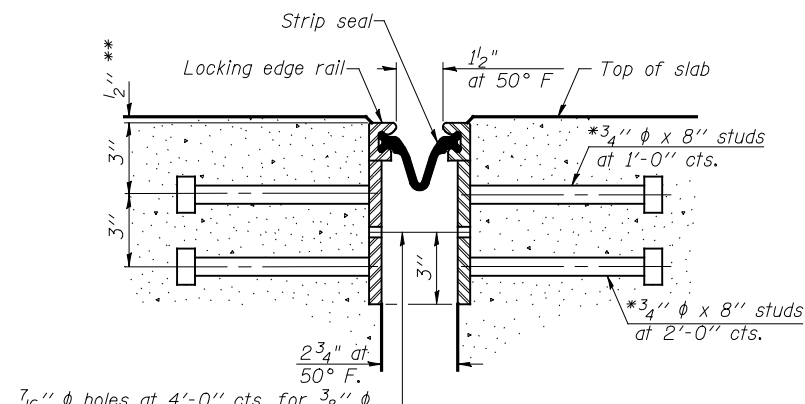
\*\* Before grinding according to Bridge Smoothness Specification.

STATE OF ILLINOIS  
DEPARTMENT OF TRANSPORTATION



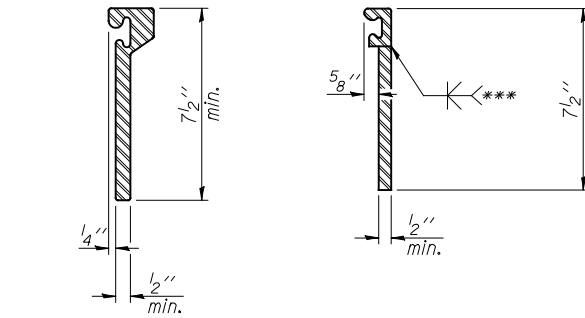
7/16" φ holes at 4'-0" cts. for 3/8" φ bolts. All bolts shall be burned, sawed, or chipped off flush with the plates after forms are removed, typ.

SECTION THRU  
ROLLED RAIL JOINT

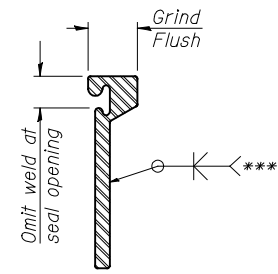


7/16" φ holes at 4'-0" cts. for 3/8" φ bolts. All bolts shall be burned, sawed, or chipped off flush with the plates after forms are removed, typ.

SECTION THRU  
WELDED RAIL JOINT



ROLLED  
EXTRUDED RAIL      WELDED RAIL

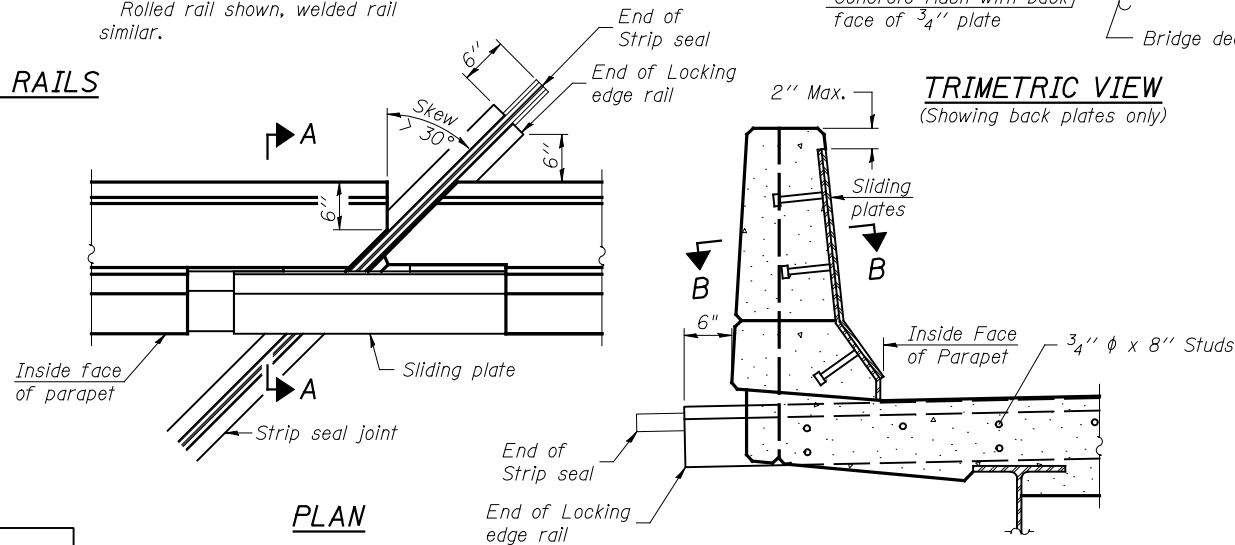


\*\*\* Back gauge not required if complete joint penetration is verified by mock-up.

LOCKING EDGE  
RAIL SPLICE

The inside of the locking edge rail groove shall be free of weld residue.  
Rolled rail shown, welded rail similar.

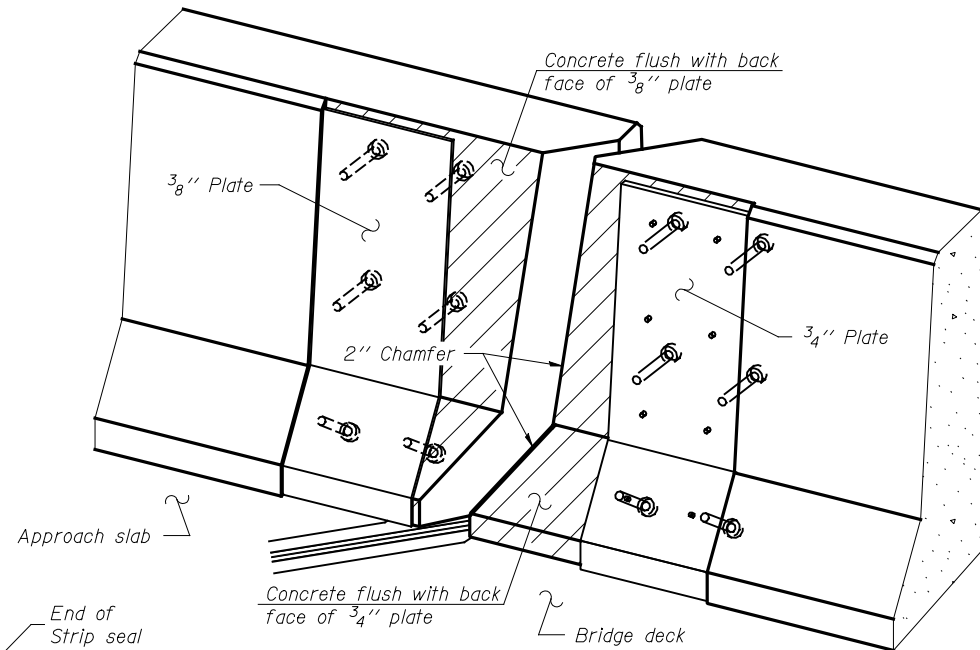
LOCKING EDGE RAILS



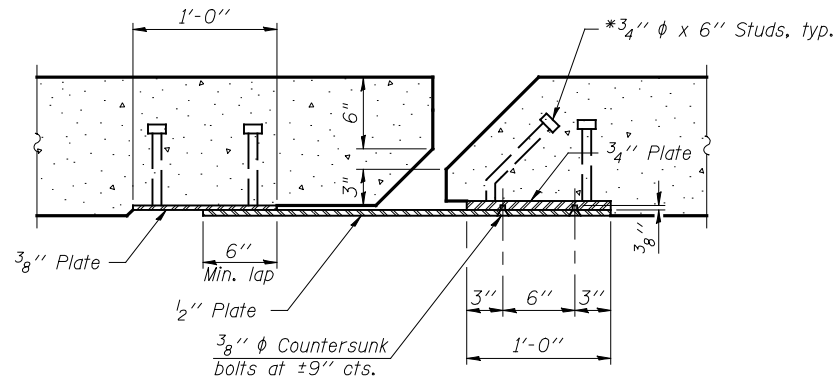
PLAN

SECTION A-A

POINT BLOCK DETAILS  
(for skews > 30°)



TRIMETRIC VIEW  
(Showing back plates only)



SECTION B-B

Notes:

The strip seal shall be made continuous and shall have a minimum thickness of 1/4". The configuration of the strip seal shall match the configuration of the Locking Edge Rails. Open or "webbed" strip seal gland configurations are not permitted. The gland shall be sized for a maximum rated movement of 4 inches. The Locking Edge Rails depicted are conceptual only, except for the minimum dimensions shown. The actual configuration of the Locking Edge Rails and matching strip seal may vary from manufacturer to manufacturer. Flanged edge rails will not be allowed. Locking Edge Rails may be spliced at slope discontinuities. The manufacturer's recommended installation methods shall be followed. The joint opening and deck dimensions detailed on the superstructure are based on a rolled rail expansion joint. If the Contractor elects to use the welded rail expansion joint, the opening and deck dimensions shall be modified according to the dimensions detailed on this sheet. Required modifications shall be made at no additional cost to the State. All steel components shall be galvanized after fabrication according to Article 520.03 of the Standard Specifications. Maximum space between rail segments at stage lines shall be 3/16", sealed with a suitable sealant.

BILL OF MATERIAL

| Item                       | Unit | Total |
|----------------------------|------|-------|
| Preformed Joint Strip Seal | Foot | 184   |

(MODIFIED)  
PREFORMED JOINT STRIP SEAL  
STRUCTURE NO. 057-0250

**JD** Johnson, Depp & Quisenberry  
CONSULTING ENGINEERS  
Springfield, Illinois

DESIGNED: DCD      DRAWN: P. Ray  
CHECKED: CMV      CHECKED: CMV/DCD

EJ-SSJ      11-1-09 (Modified)

|                   |                |                     |                           |                 |              |
|-------------------|----------------|---------------------|---------------------------|-----------------|--------------|
| SHEET 12<br>OF 27 | F.A.I.<br>RTE. | SECTION             | COUNTY                    | TOTAL<br>SHEETS | SHEET<br>NO. |
|                   | 55             | (57-7HB-1)BR        | MCLAN                     | 153             | 62           |
|                   |                | STA. 626+53.70      | CONTRACT NO.              | 70520           |              |
|                   |                | FED. ROAD DIST. NO. | ILLINOIS FED. AID PROJECT |                 |              |

FILE: J:\JDO\10169 IL-D5 1-55NB McLeon\14EB\0570250-70520-012-str\psseal.dgn

USER: DCD

SAVE DATE: 8/6/2010

PRINT DATE: 08/06/2010 20:56:29