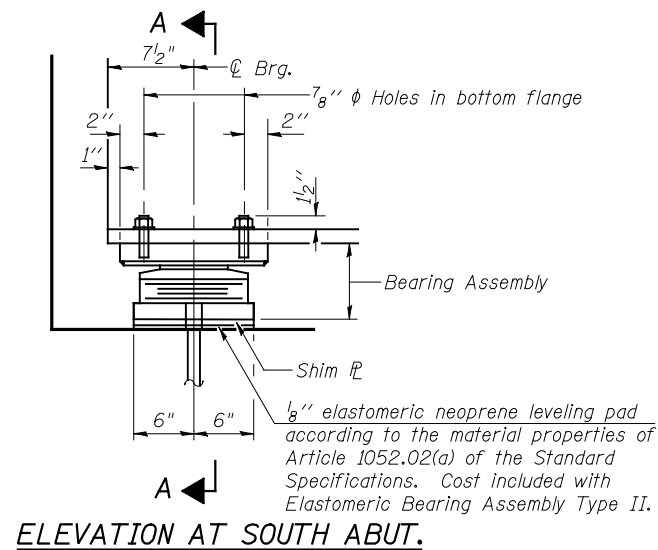
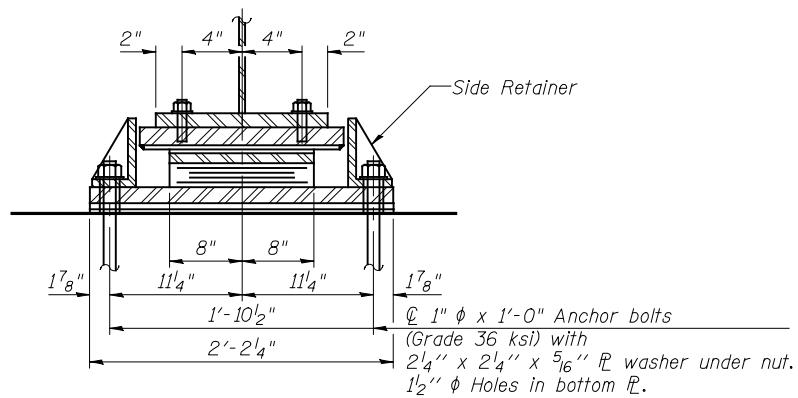


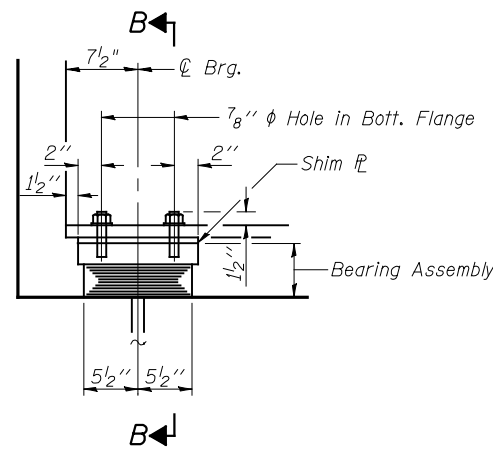
STATE OF ILLINOIS
DEPARTMENT OF TRANSPORTATION



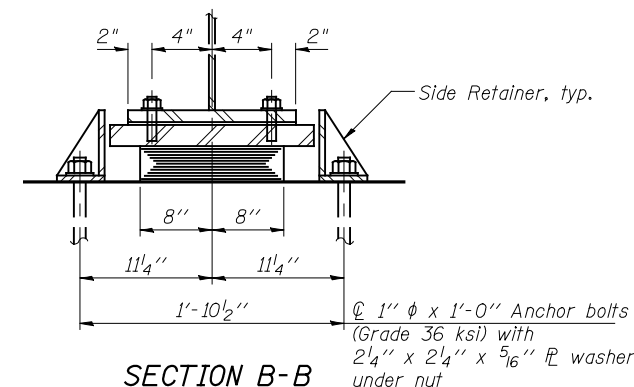
ELEVATION AT SOUTH ABUT.



SECTION A-A



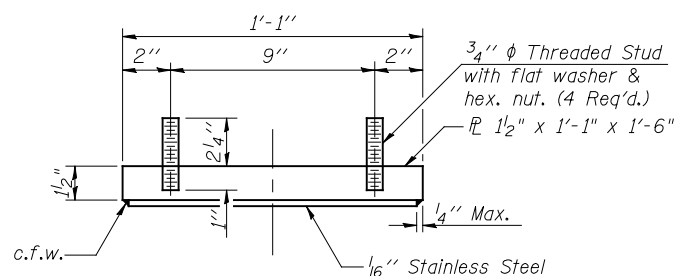
ELEVATION AT NORTH ABUT.



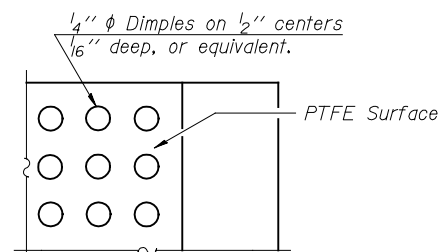
SECTION B-B

TYPE II ELASTOMERIC EXP. BRG.

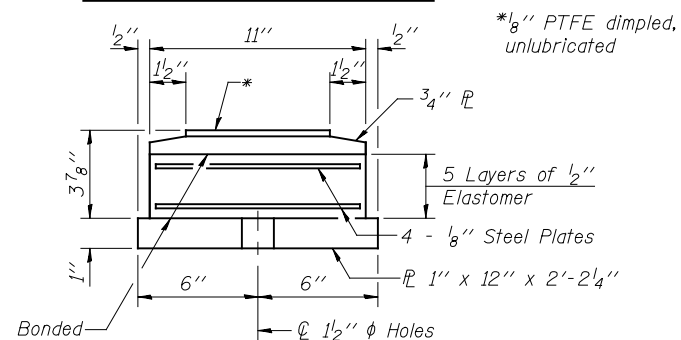
TYPE I ELASTOMERIC EXP. BRG.



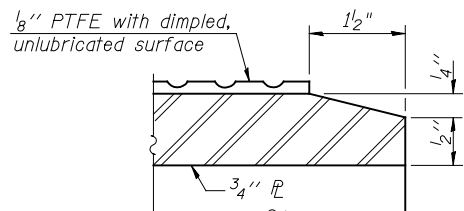
TOP BEARING ASSEMBLY



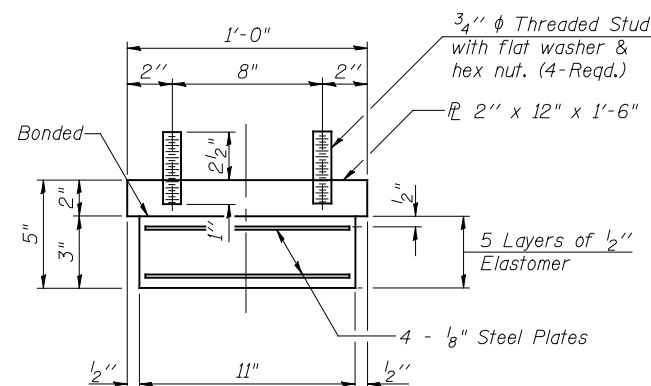
PLAN-PTFE SURFACE



BOTTOM BEARING ASSEMBLY



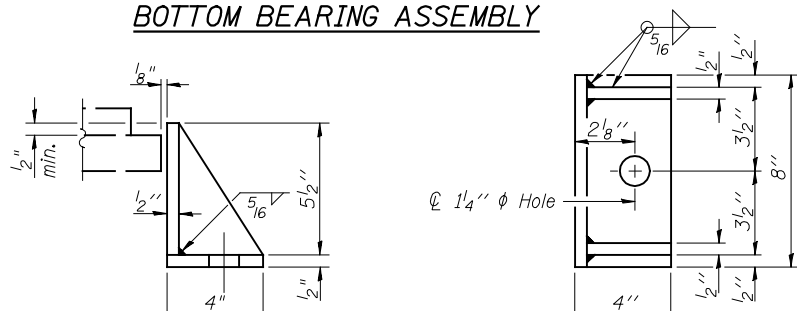
SECTION THRU PTFE



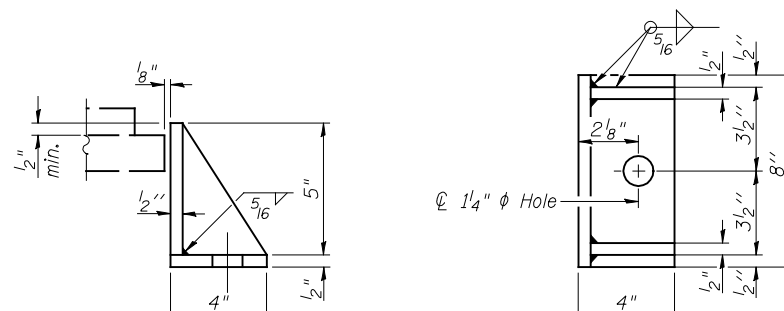
BEARING ASSEMBLY

Note:
Shim plates shall not be placed under Bearing Assembly.

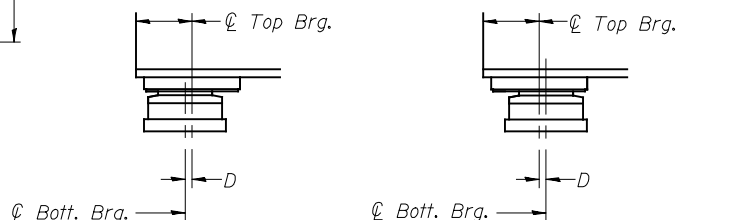
Notes:
Anchor bolts shall be ASTM F1554 all-thread (or an Engineer-approved alternate material) of the grade(s) and diameter(s) specified. ASTM A307 Grade C anchor bolts may be used in lieu of ASTM F1554 Grade 36 (Fy=36ksi). The corresponding specified grade of AASHTO M314 anchor bolts may be used in lieu of ASTM F1554.
Anchor bolts for Type II bearings shall be placed in holes drilled in the concrete through holes in the bottom bearing plate after members are in place. Side retainers shall be placed after bolts are installed.
Anchor bolts for side retainers may be cast in place or installed in holes drilled before or after members are in place.
Drilled and set anchor bolts shall be installed according to Article 521.06 of the Standard Specifications.
Side retainers and other steel members required for the bearing assembly shall be included in the cost of Elastomeric Bearing Assembly, Type I & Type II.
The 1/8" PTFE sheet shall be bonded directly to the top steel plate with a two-component, medium viscosity epoxy resin, conforming to the requirements of the Federal Specification MMM-A-134, Type I. The bond agent shall be applied on the full area of the contact surfaces.
Bonding of 1/8" PTFE sheet during vulcanizing process will be permitted provided the process and method of adjusting assembly height is approved by the Engineer.
Two 1/8 in. adjusting shims shall be provided for each bearing in addition to all other plates or shims and placed as shown on bearing details.
The structural steel plates of the Bearing Assembly shall conform to the requirements of AASHTO M 270 Grade 50.



SIDE RETAINER - SOUTH ABUT.
Equivalent rolled angle with stiffeners will be allowed in lieu of welded plates.



SIDE RETAINER - NORTH ABUT.
Equivalent rolled angle with stiffeners will be allowed in lieu of welded plates.



BELOW 50°F. ABOVE 50°F.
(Move bott. brg. away from fixed brg.) (Move bott. brg. toward fixed brg.)

SETTING ANCHOR BOLTS AT EXP. BRG.

D=1/8" per each 100' of expansion for every 15° temp. change from the normal temp. of 50°F.

BILL OF MATERIAL

Item	Unit	Total
Elastomeric Bearing Assembly Type I	Each	6
Elastomeric Bearing Assembly Type II	Each	6
Anchor Bolts, 1"	Each	24

BEARING DETAILS - ABUTMENTS
STRUCTURE NO. 057-0250

SHEET 16 OF 27	F.A.I. RTE.	SECTION	COUNTY	TOTAL SHEETS	SHEET NO.
	55	(57-THB-1)BR	MCLAN	153	66
STA. 626+53.70			CONTRACT NO. 70520		
FED. ROAD DIST. NO. ILLINOIS FED. AID PROJECT					

JD Johnson, Depp & Quisenberry
CONSULTING ENGINEERS
Springfield, Illinois

DESIGNED: DCD DRAWN: SJS
CHECKED: CMV CHECKED: CMV/DCD

I-2E-2 11-1-09 (Modified)