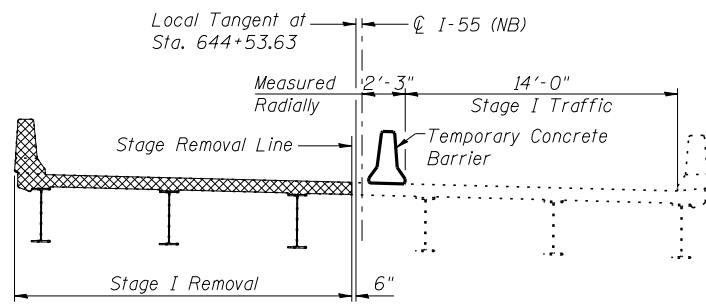
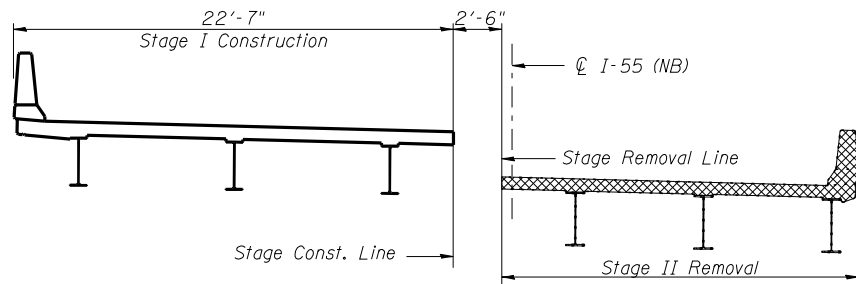


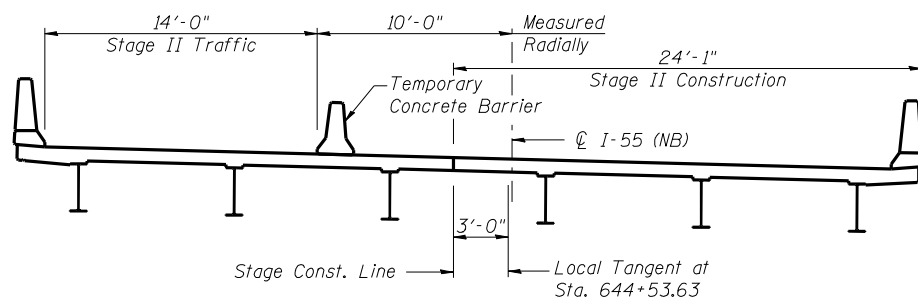
STATE OF ILLINOIS
DEPARTMENT OF TRANSPORTATION



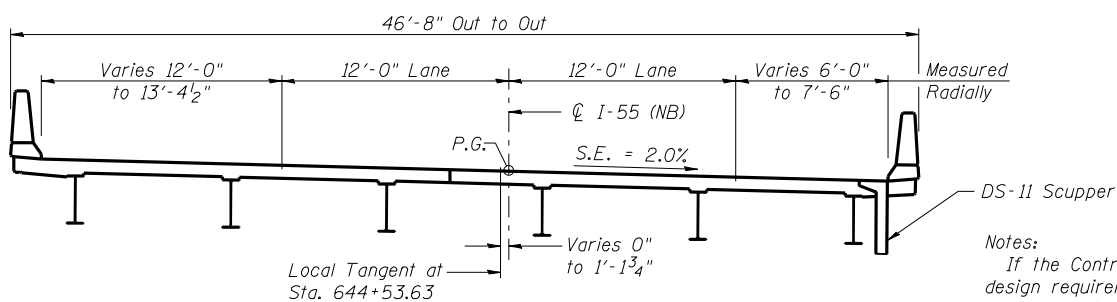
STAGE I REMOVAL & TRAFFIC



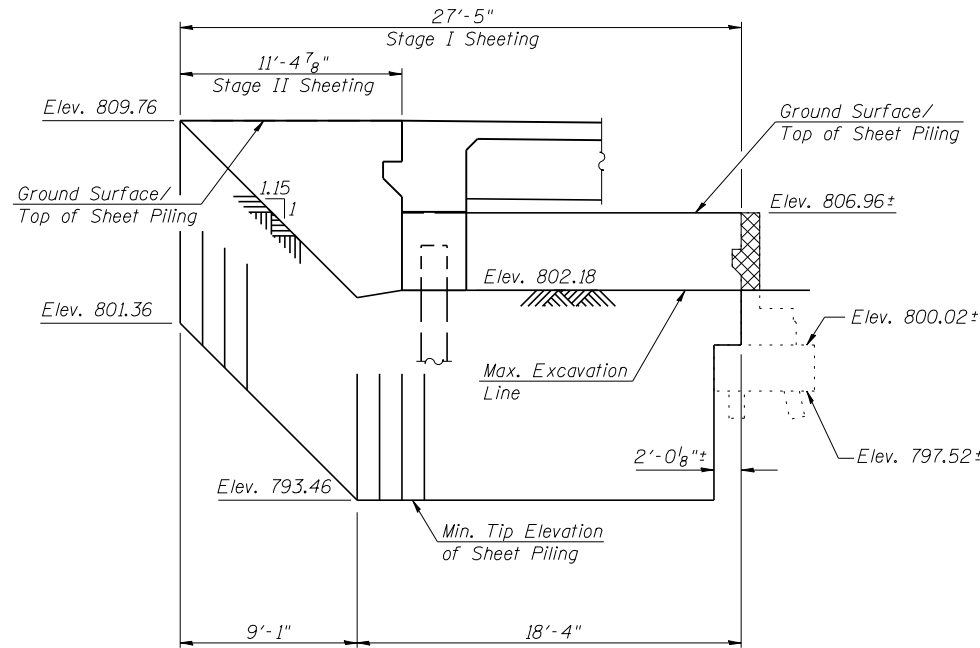
STAGE I CONSTRUCTION & STAGE II REMOVAL



STAGE II CONSTRUCTION & TRAFFIC

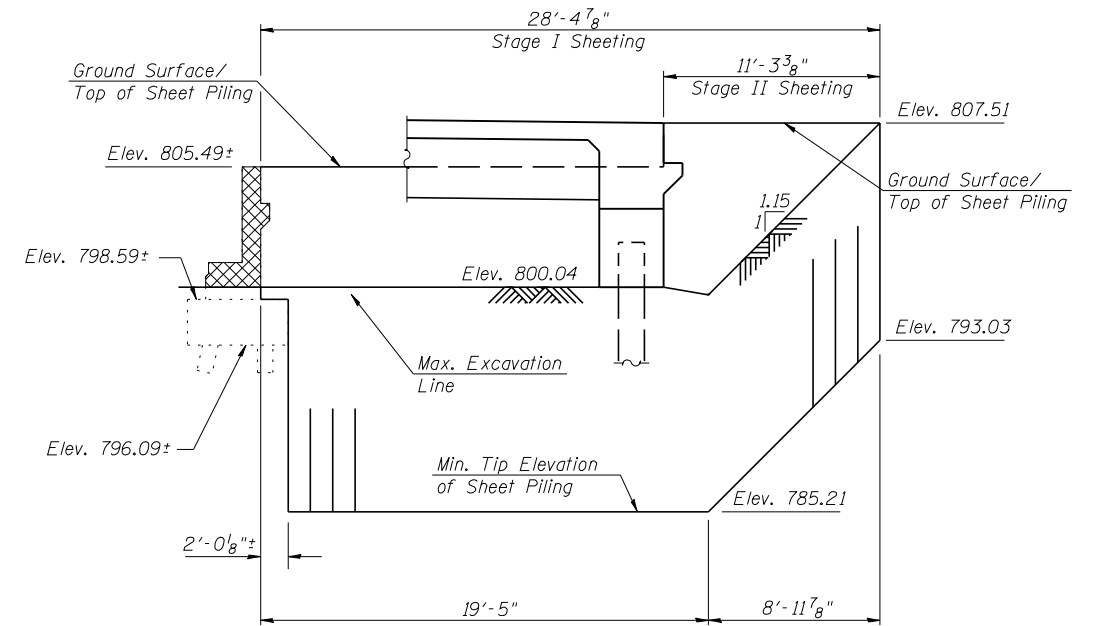


PROPOSED CROSS SECTION



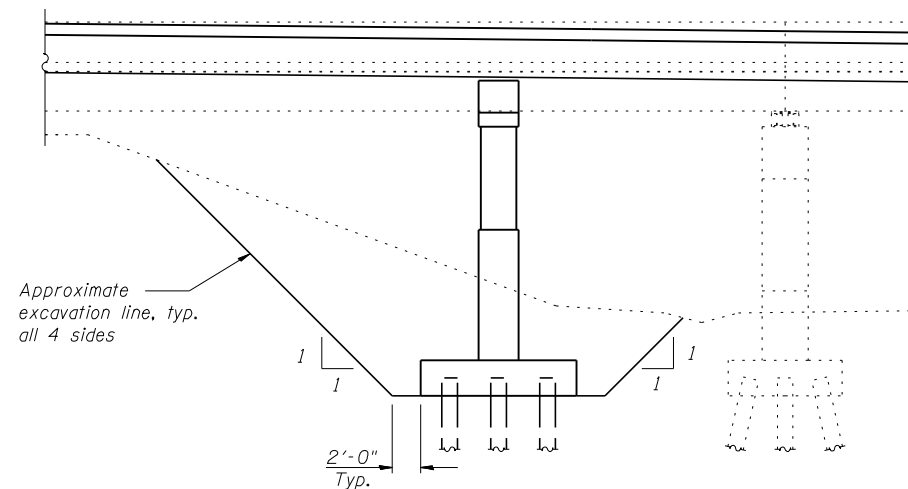
**TEMPORARY SHEET PILING
AT NORTH ABUTMENT**

(Dimensions Taken Along Stage Construction Line)
Minimum Section Modulus = 15.1 in³/ft within limits of Stage I Sheeting and 23.6 in³/ft within limits of Stage II Sheeting.



**TEMPORARY SHEET PILING
AT SOUTH ABUTMENT**

(Dimensions Taken Along Stage Construction Line)
Minimum Section Modulus = 23.6 in³/ft within limits of Stage I Sheeting and 35.1 in³/ft within limits of Stage II Sheeting.



PIER EXCAVATION DETAIL

(Horizontal Dimensions at Rt. L's)
(Pier 1 shown, Pier 2 similar)

Notes:
If the Contractor chooses to alter the temporary cantilevered sheet piling design requirements shown on the plans, a design submittal including plan details and calculations will be required for review and acceptance by the Engineer.
The Contractor shall connect the first sheet to the existing abutment wall to ensure stability of sheets driven to the top of the existing footing. This connection shall be reviewed and accepted by the Engineer and included in the cost for Temporary Sheet Piling.
Cross Hatched areas indicate removal of existing structure.
All cross sections are looking south.
Removal of existing overlay is included with Removal of Existing Structures.
See Roadway plans for quantity of Temporary Concrete Barrier.
See sheet 5 of 26 for details of Temporary Concrete Barrier.
Stage Removal and Construction lines also apply to the abutments.
Stage Construction line for piers is shown on pier sheets. Entire Pier removal shall be performed after completion of Stage II Construction.

**STAGE CONSTRUCTION DETAILS
STRUCTURE NO. 057-0249**

	SHEET NO. 4	F.A.I. RTE.	SECTION	COUNTY	TOTAL SHEETS	SHEET NO.
	26 SHEETS	55	(57-7HB-2)BR	MCLEAN	153	81
				CONTRACT NO. 70520		
				ILLINOIS FED. AID PROJECT		