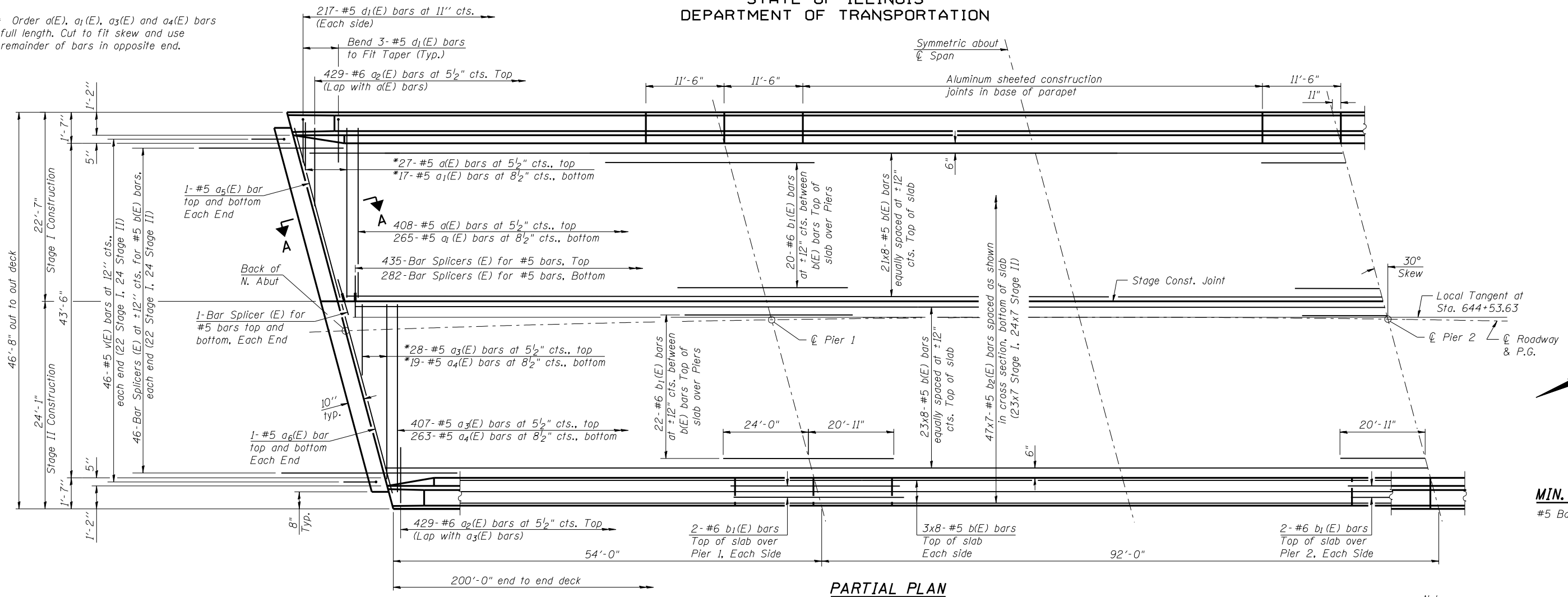


STATE OF ILLINOIS
DEPARTMENT OF TRANSPORTATION

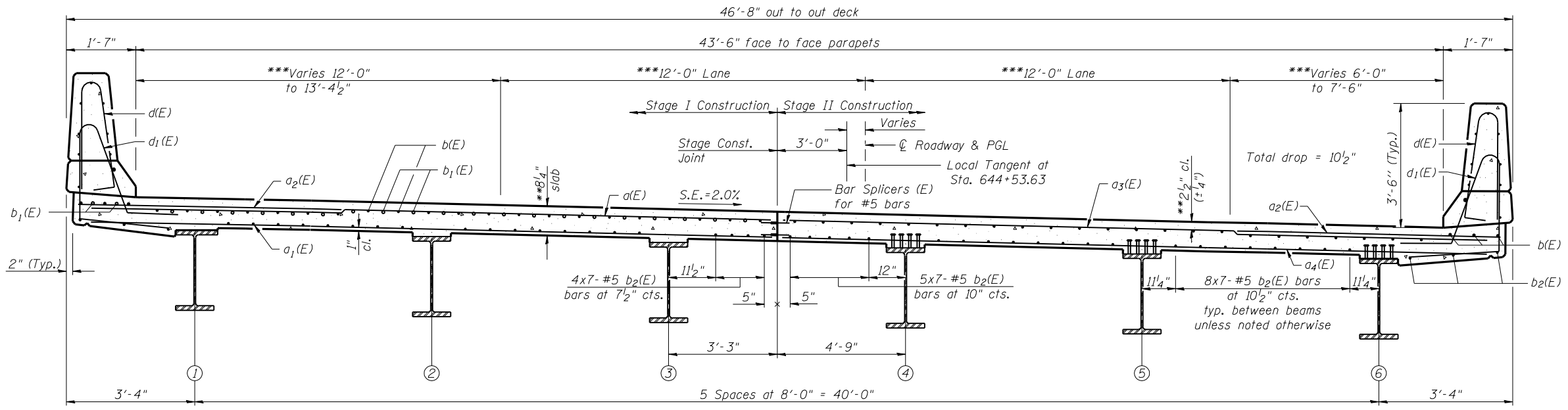
* Order a(E), a₁(E), a₃(E) and a₄(E) bars full length. Cut to fit skew and use remainder of bars in opposite end.



PARTIAL PLAN

MIN. BAR LAP
#5 Bar = 2'-7"

Notes:
See sheet 10 of 26 for superstructure details, parapet reinforcement and Bill of Material.
Bars indicated thus 23x8-#5 etc. indicates 23 lines of bars with 8 lengths per line.
See Sheet 11 of 26 for Section A-A.
See Sheet 21 of 26 for Bar Splicer Details.

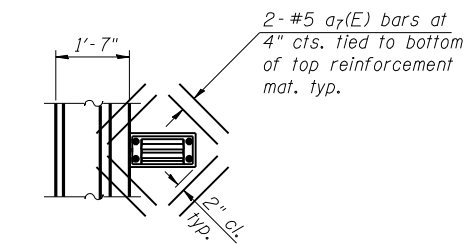


NEAR PIER

NEAR MIDSPAN

CROSS SECTION
(Looking South)
(Scupper not shown for clarity)

**Prior to grinding
***Radial Dimensions



SCUPPER REINFORCEMENT
See sheet 1 of 26 for location of scuppers.
Cut longitudinal reinforcement to clear drainage scupper.

SUPERSTRUCTURE
STRUCTURE NO. 057-0249

<p>LIN ENGINEERING, LTD. Consulting Engineers Chatham, Illinois</p>	SHEET NO. 9	F.A.I. RTE.	SECTION	COUNTY	TOTAL SHEETS	SHEET NO.
	26 SHEETS	55	(57-7HB-2)BR	MCLEAN	153	86
				CONTRACT NO. 70520		
ILLINOIS FED. AID PROJECT						