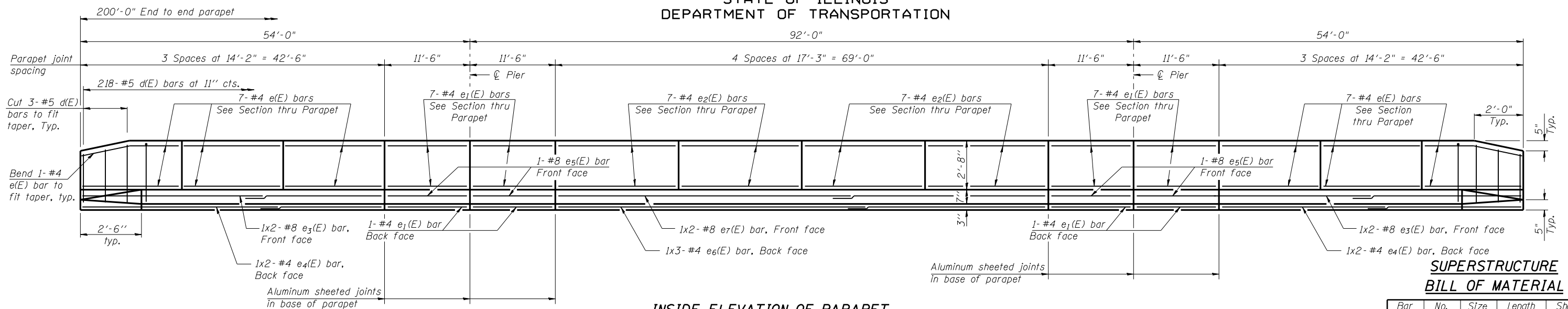
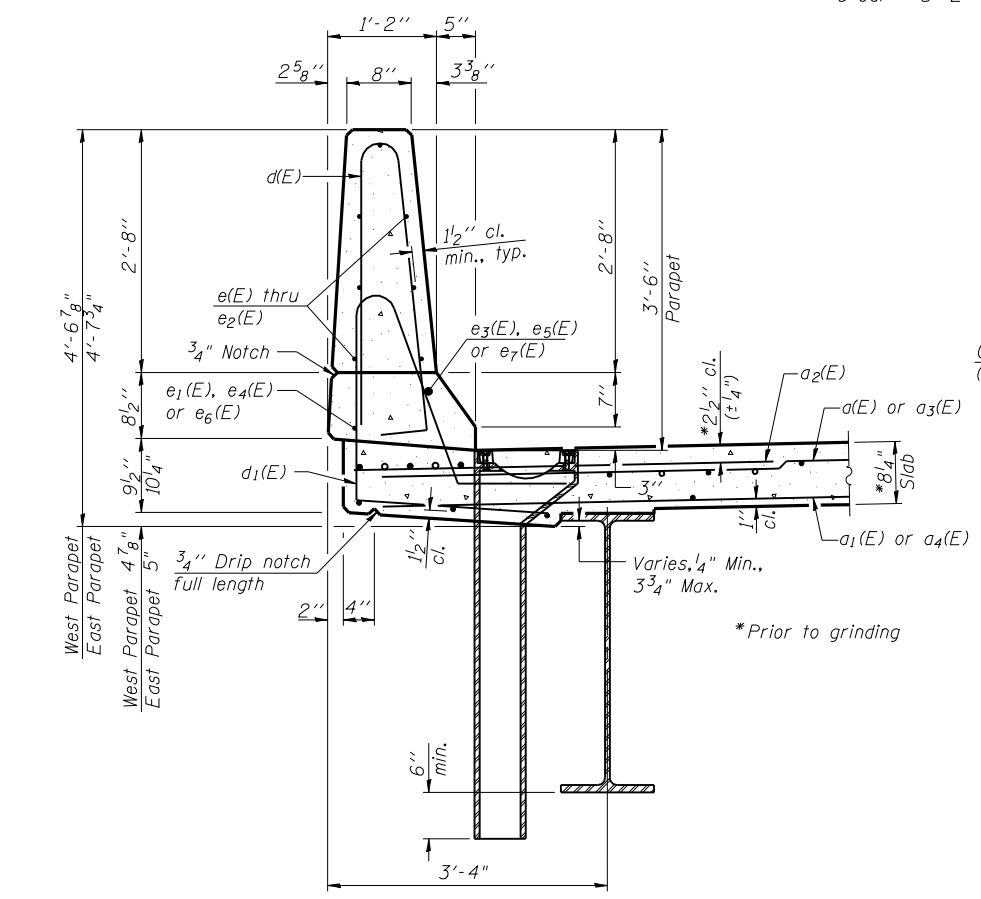


STATE OF ILLINOIS
DEPARTMENT OF TRANSPORTATION

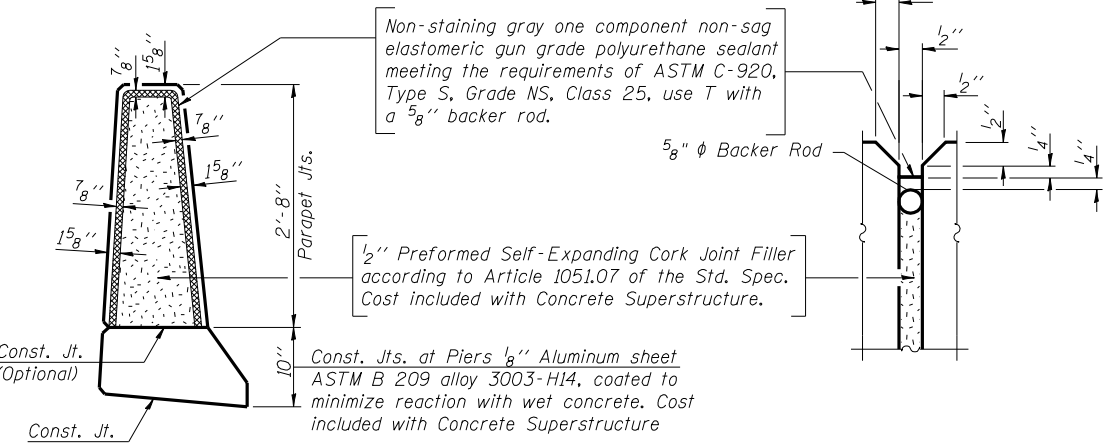


INSIDE ELEVATION OF PARAPET
(Measured Along Inside Face of Parapet)

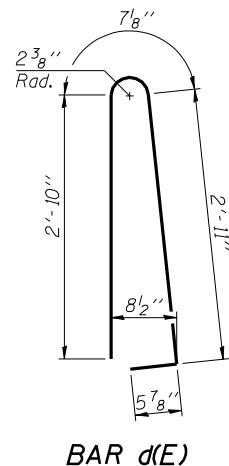
MINIMUM BAR LAP
(Parapet)
#4 bar = 2'-0"
#8 bar = 5'-2"



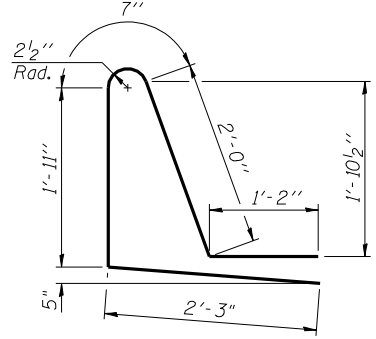
SECTION THRU PARAPET
(West Parapet Shown)



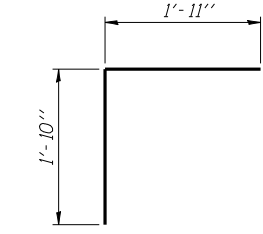
PARAPET JOINT DETAILS



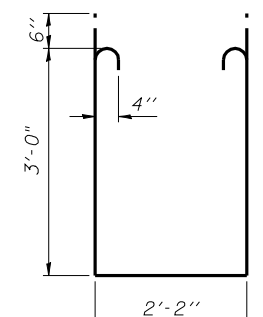
BAR d(E)



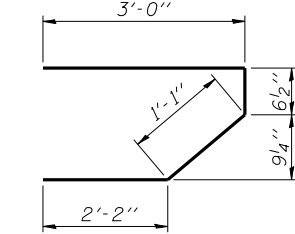
BAR d1(E)



BAR v(E)



BAR s1(E)



BAR s(E)

**SUPERSTRUCTURE
BILL OF MATERIAL**

Bar	No.	Size	Length	Shape
a(E)	435	#5	22'-2"	—
a1(E)	282	#5	21'-10"	—
a2(E)	858	#6	6'-6"	—
a3(E)	435	#5	23'-8"	—
a4(E)	282	#5	23'-4"	—
a5(E)	4	#5	25'-5"	—
a6(E)	4	#5	27'-2"	—
a7(E)	8	#5	1'-6"	—
b(E)	400	#5	27'-4"	—
b1(E)	92	#6	44'-11"	—
b2(E)	329	#5	30'-10"	—
d(E)	436	#5	6'-10"	U
d1(E)	434	#5	7'-11"	U
e(E)	84	#4	13'-11"	—
e1(E)	64	#4	11'-3"	—
e2(E)	56	#4	17'-0"	—
e3(E)	8	#8	23'-10"	—
e4(E)	8	#4	22'-3"	—
e5(E)	8	#8	11'-3"	—
e6(E)	6	#4	24'-4"	—
e7(E)	4	#8	37'-1"	—
m(E)	4	#6	2'-10"	—
m1(E)	4	#6	24'-11"	—
m2(E)	12	#6	10'-11"	—
m3(E)	2	#6	2'-9"	—
m4(E)	2	#6	4'-6"	—
m5(E)	8	#6	7'-6"	—
m6(E)	4	#6	26'-8"	—
m7(E)	12	#6	11'-6"	—
m8(E)	6	#6	25'-10"	—
m9(E)	6	#6	27'-7"	—
s(E)	94	#5	6'-10"	U
s1(E)	84	#4	9'-2"	U
v(E)	92	#5	3'-9"	U
Reinforcement Bars, Epoxy Coated		Pound	83,700	
Concrete Superstructure		Cu. Yd.	332.8	

**SUPERSTRUCTURE DETAILS
STRUCTURE NO. 057-0249**

Bars indicated thus 1x2-#4 etc. indicates 1 line of bars with 2 lengths per line.

	SHEET NO. 10	F.A.I. RTE.	SECTION	COUNTY	TOTAL SHEETS	SHEET NO.
	26 SHEETS	55	(57-7HB-2)BR	MCLEAN	153	87
			CONTRACT NO. 70520			
ILLINOIS FED. AID PROJECT						

Designed By: RH
Date: April, 2010

Checked By: MTH
File: 057-0249.dgn

Drawn By: RH