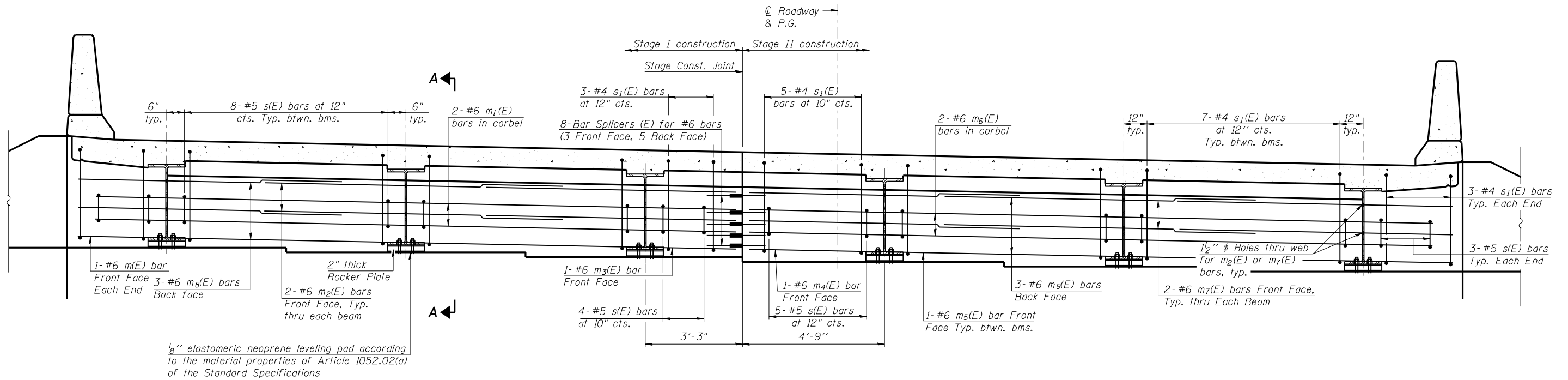


STATE OF ILLINOIS
DEPARTMENT OF TRANSPORTATION



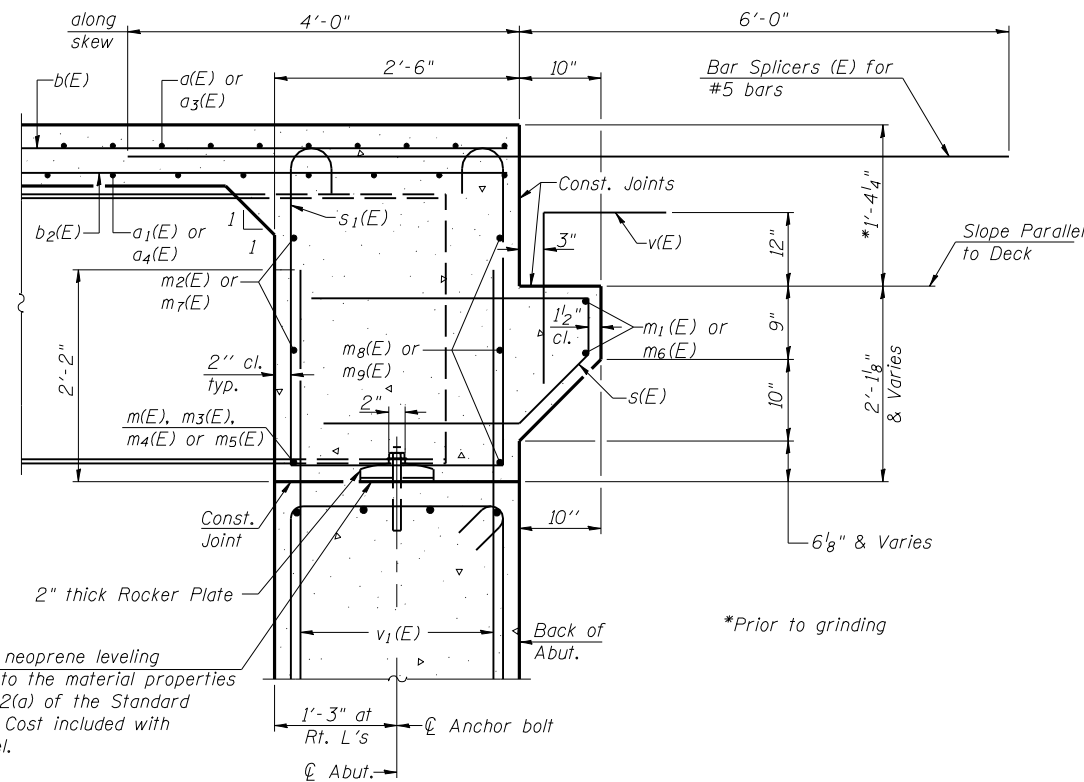
DIAPHRAGM ELEVATION AT SOUTH ABUTMENT

(Looking South)
(All horizontal dimensions at right angles to local tangent)
(North Abutment mirrored about \bar{C} Structure)

Notes:

Reinforcement bars in diaphragm are billed with superstructure on sheet 10 of 26.
Concrete in diaphragm is included with Concrete Superstructure on sheet 10 of 26.
For details of bars $s(E)$ & $s_1(E)$ see sheet 10 of 26.
The $s(E)$ and $s_1(E)$ bars shall be placed parallel to the beams. Spacing for these bars shall be at right angles to the beams.
For location of holes thru web, see sheet 15 of 26.

$\frac{1}{8}$ " elastomeric neoprene leveling pad according to the material properties of Art. 1052.02(a) of the Standard Specifications. Cost included with Structural Steel.



SECTION A-A

Dimensions at right angles to abutment, except as shown.

MIN. BAR LAP
#6 bar = 3'-4"

**CONCRETE END DIAPHRAGMS
STRUCTURE NO. 057-0249**

<p>LIN ENGINEERING, LTD. Consulting Engineers Chatham, Illinois</p>	SHEET NO. 11	F.A.I. RTE.	SECTION	COUNTY	TOTAL SHEETS	SHEET NO.
	26 SHEETS	55	(57-7HB-2)BR	MCLEAN	153	88
				CONTRACT NO. 70520		
				ILLINOIS FED. AID PROJECT		