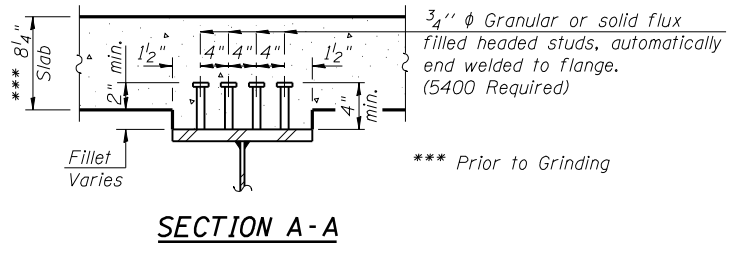
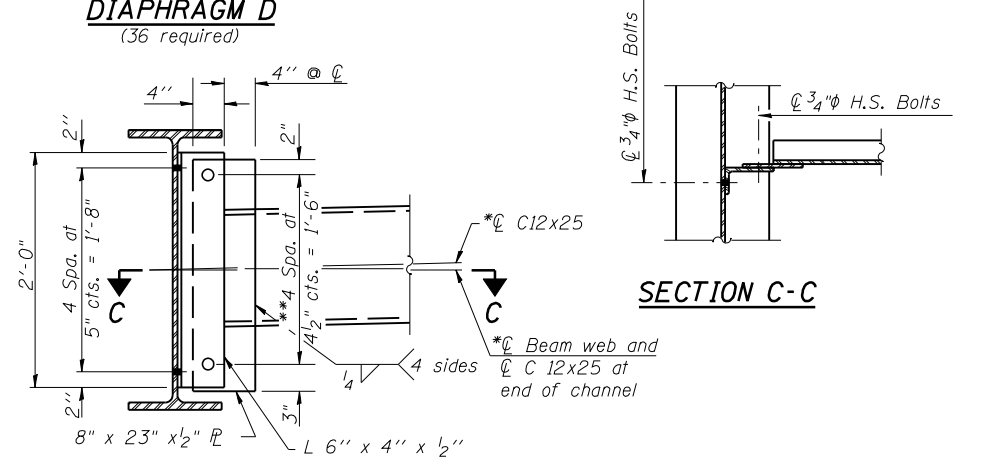
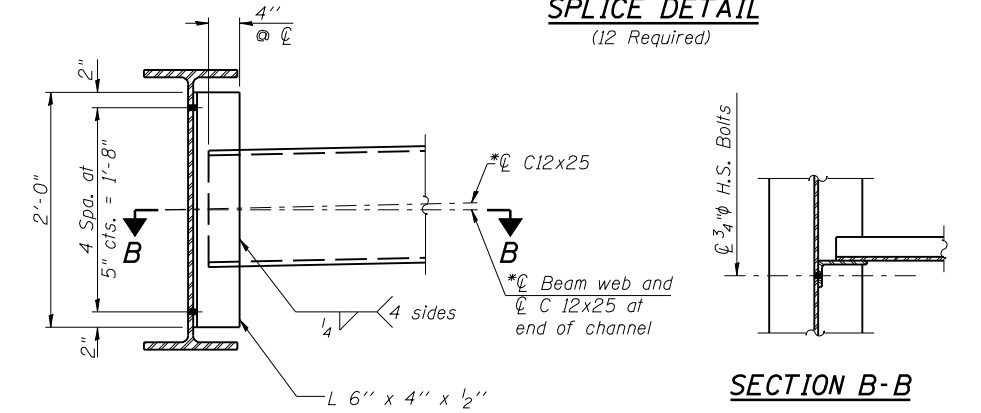
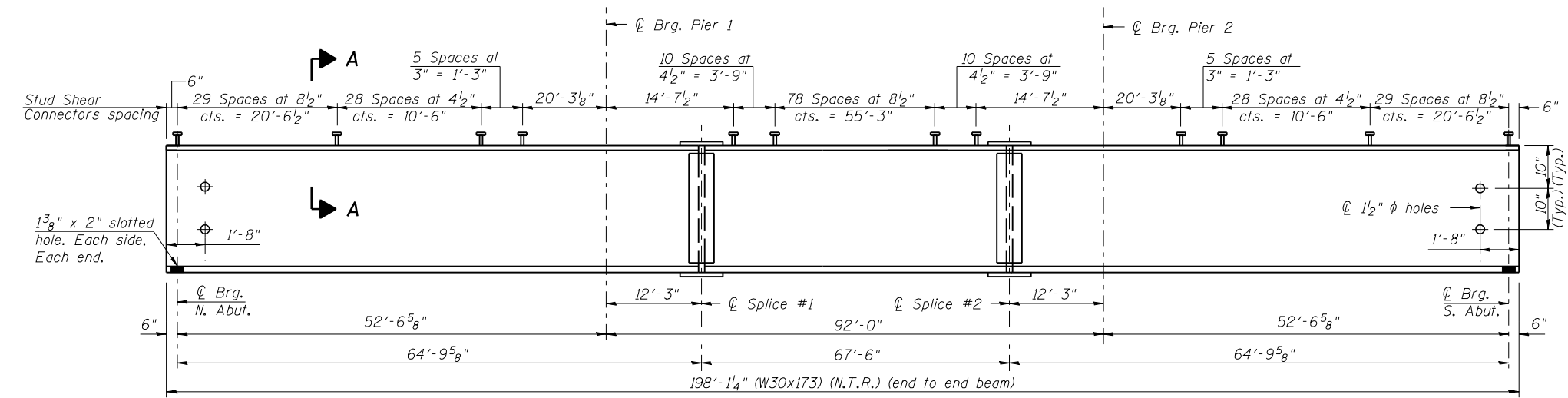
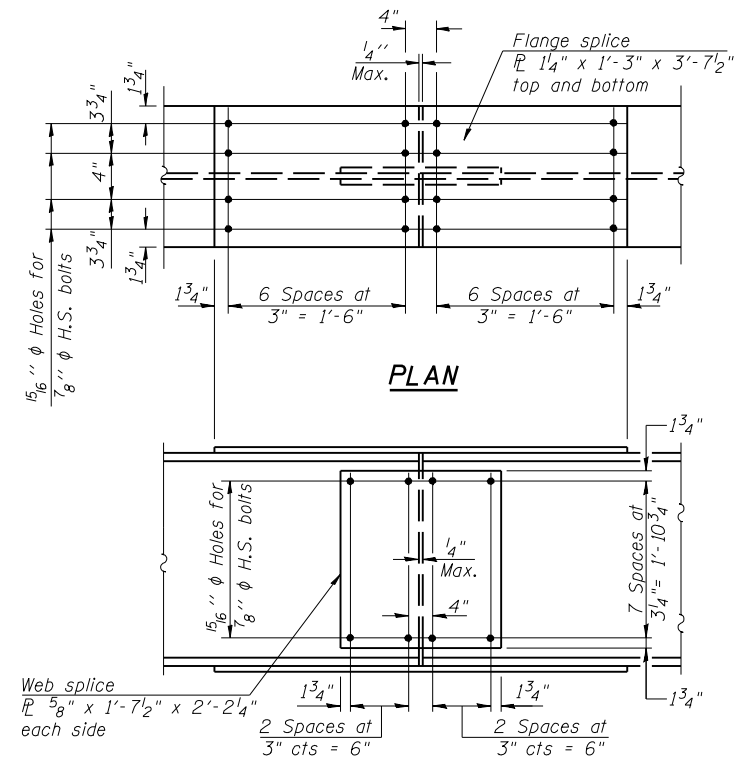
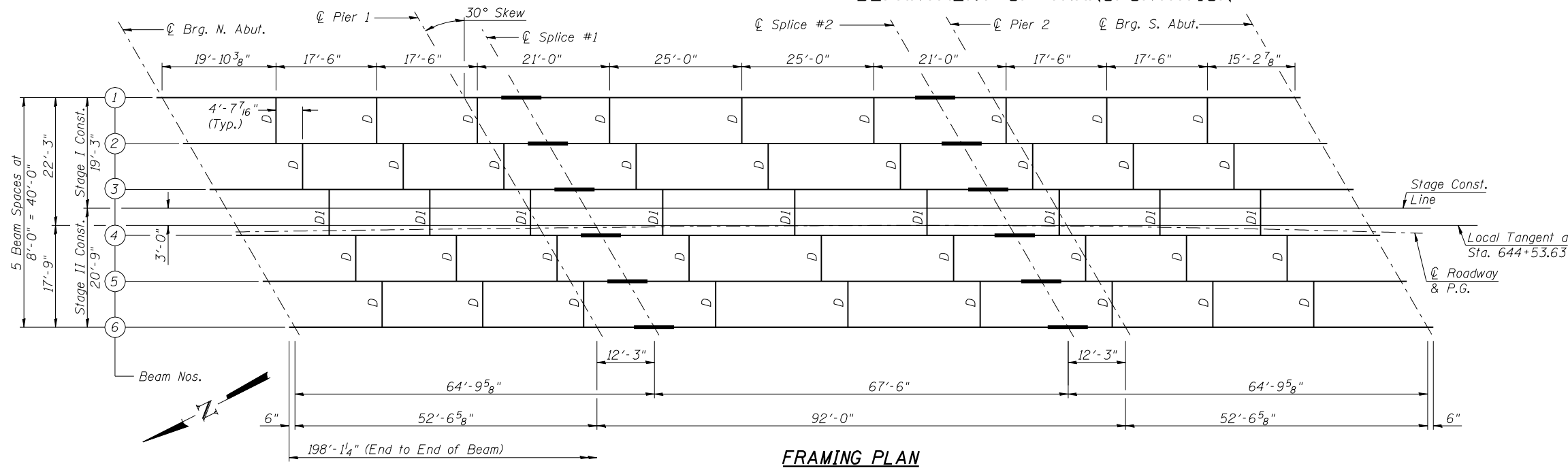


STATE OF ILLINOIS
DEPARTMENT OF TRANSPORTATION



Notes:

3/4" ⌀ H.S. Bolts 1⁵/₁₆" ⌀ Holes in diaphragms, unless otherwise noted.

Two hardened washers required for each set of oversized holes and 5/16" plate washer over slotted holes.

*C12x30 is permitted to facilitate material acquisition. Calculated weight of structural steel is based on C12x25. The alternate, if utilized, shall be provided at no additional cost to the Department.

**3/4" ⌀ HS bolts, 1³/₁₆" x 1⁷/₈" vertical slotted holes in 8" x 23" x 1/2" plate and L 6" x 4" x 1/2". Slots shall be positioned such that the bolts start at one end with no concrete load and finish near the opposite end after the deck pour. Bolts in slotted holes shall be finger tightened and then fully tightened after second stage deck pour.

TOP OF BEAM ELEVATIONS
(For Fabrication Only)

Location	Beam 1	Beam 2	Beam 3	Beam 4	Beam 5	Beam 6
⊕ Brg. N. Abut.	809.42	809.21	809.01	808.80	808.60	808.39
⊕ Brg. Pier 1	808.84	808.63	808.43	808.22	808.01	807.80
⊕ Splice 1	808.71	808.50	808.29	808.08	807.87	807.66
⊕ Splice 2	807.98	807.77	807.56	807.35	807.14	806.92
⊕ Brg. Pier 2	807.86	807.65	807.43	807.22	807.01	806.79
⊕ Brg. S. Abut.	807.32	807.11	806.89	806.68	806.46	806.25

- NOTES:
- All beams and splice plates shall be M270 Grade 50 (NTR).
 - All diaphragms shall be installed as steel is erected and secured with erection pins and bolts except as otherwise noted. Individual diaphragms at supports may be temporarily disconnected to install bearing anchor rods.
 - Load carrying components designated "NTR" shall conform to the Supplemental Requirements for Notch Toughness, Zone 2.

<p>LIN ENGINEERING, LTD. Consulting Engineers Chatham, Illinois</p>	SHEET NO. 15	F.A.I. RTE.	SECTION	COUNTY	TOTAL SHEETS	SHEET NO.
	26 SHEETS	55	(57-7HB-2)BR	MCLEAN	153	92
				CONTRACT NO. 70520		
ILLINOIS FED. AID PROJECT						