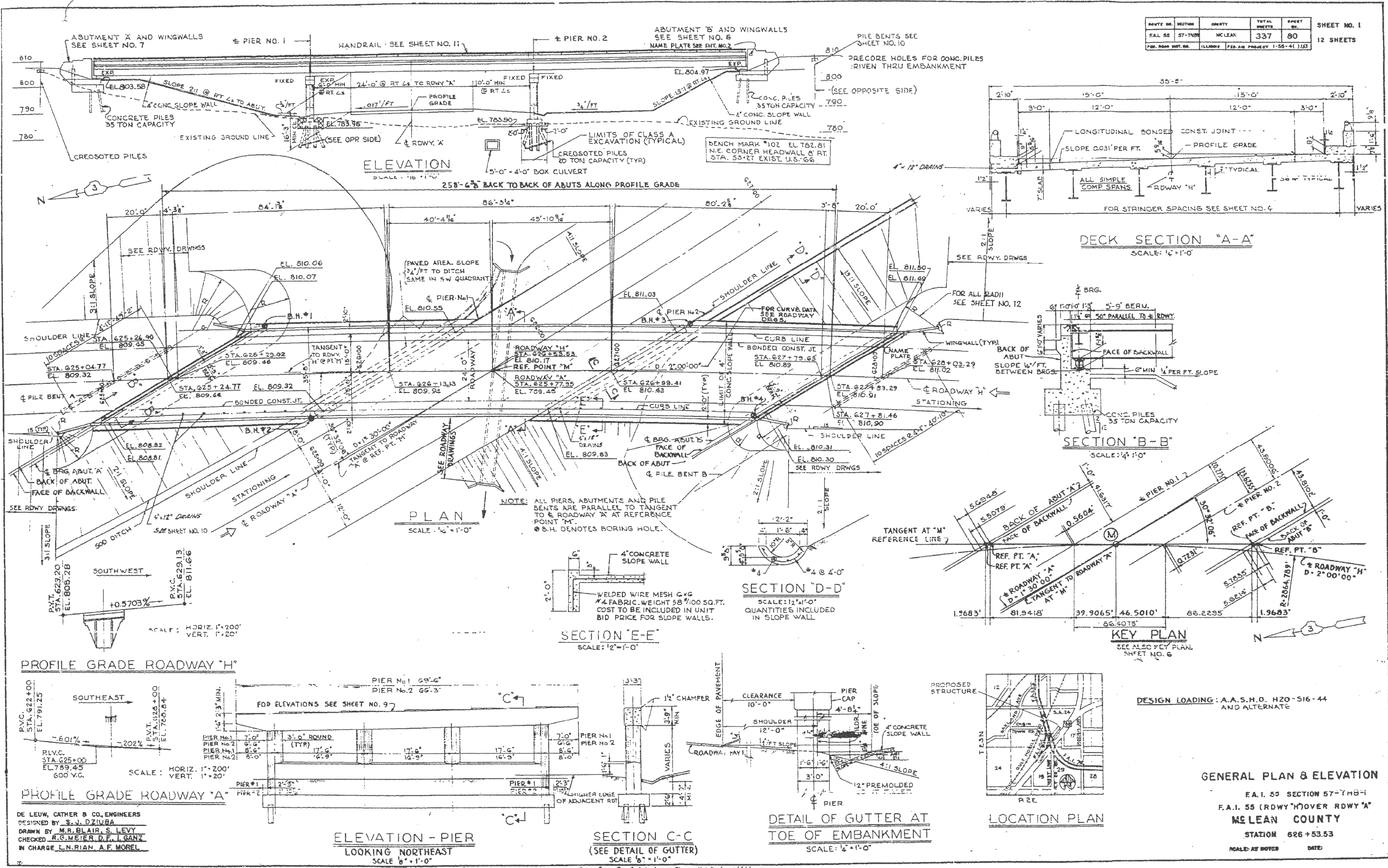


| | | | | |
|--------------------------|----------|----------|--------------|-----------|
| ROUTE NO. | SECTION | QUANTITY | TOTAL SHEETS | SHEET NO. |
| 55 | 57-7HB-2 | MCLEAN | 337 | 80 |
| SHEET NO. 1 12 SHEETS | | | | |



NOTE: ALL PIERS, ABUTMENTS AND PILE BENTS ARE PARALLEL TO TANGENT TO ROADWAY 'A' AT REFERENCE POINT 'M'.
 B.H. DENOTES BORING HOLE.

Rev. 8-6-64: Changed floor drains from 4" to 4 1/2", Removed 4" P.I.F. from Sec. B-B between Stairwell & Abut. W.L.C.

| | | | | | | | | | | | |
|--|---------------------------------|------------|-----------|---|---|---------------------------|-------------------------|--------|--------------|-----------|--|
| FILE NAME = | USER NAME = SJS | DESIGNED - | REVISED - | STATE OF ILLINOIS DEPARTMENT OF TRANSPORTATION | GENERAL PLAN & ELEVATION / S.N. 057-0005 (EXISTING) (FOR INFORMATION ONLY) | F.A.I. RTE. | SECTION | COUNTY | TOTAL SHEETS | SHEET NO. | |
| ... \0570520-shr-GPE_057-0005.dgn | | DRAWN - | REVISED - | | | 55 | (57-7HB-2 & 57-7HB-1)BR | MCLEAN | 153 | 104 | |
| Johnson, Depp & Oulsenberry CONSULTING ENGINEERS Springfield, Illinois | PLOT SCALE = 100.0000' / IN. | CHECKED - | REVISED - | | | CONTRACT NO. 70520 | | | | | |
| | PLOT DATE = 08/09/2010 10:56:33 | DATE - | REVISED - | | | ILLINOIS FED. AID PROJECT | | | | | |