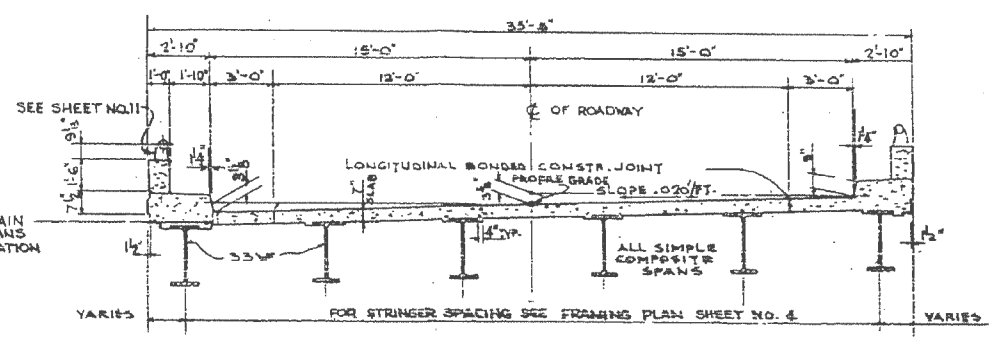
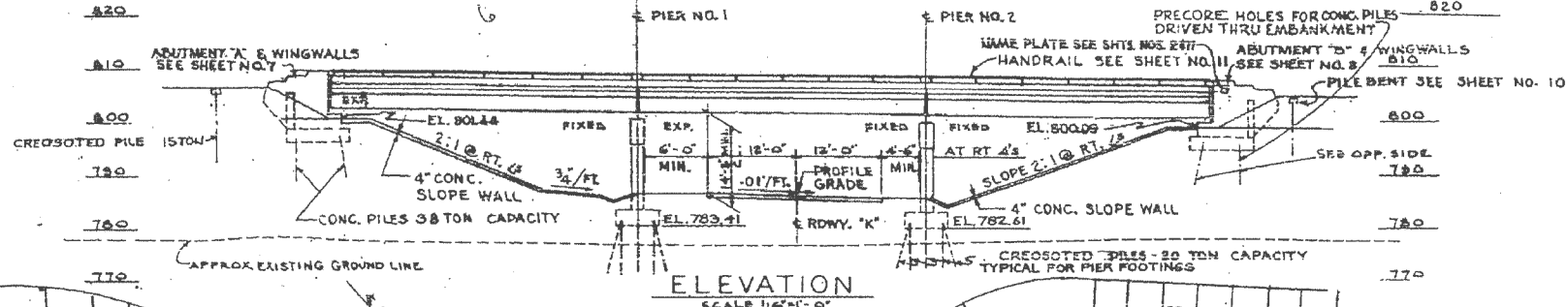


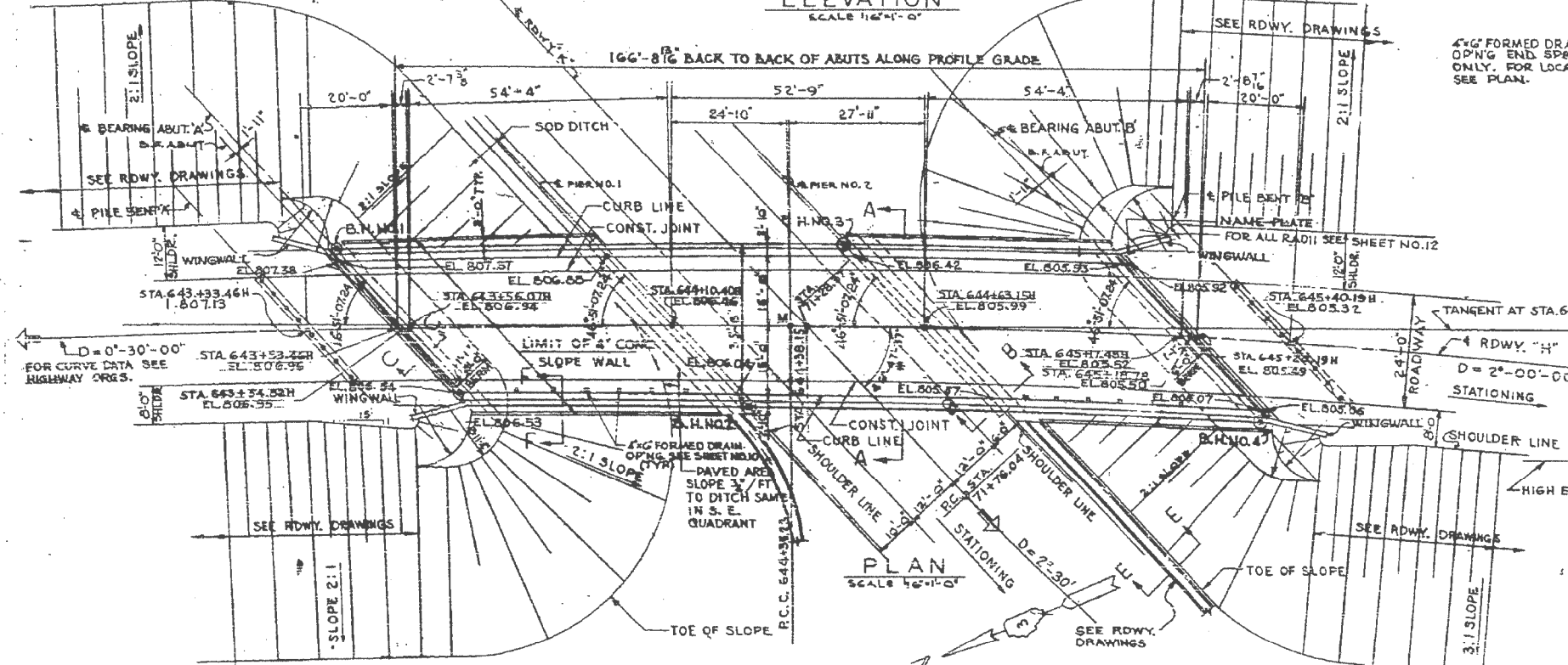
BENCH MARK #83- EL. 778.97
TOP OF IRON PIPE
24' 0" LT. STA. 77+65.1 &
1' S.E. T. FENCE CORNER

ROUTE NO.	SECTION	SUBJECT	TOTAL SHEETS	SHEET NO.
EAL 55	57-2	MC LEAN	253	78

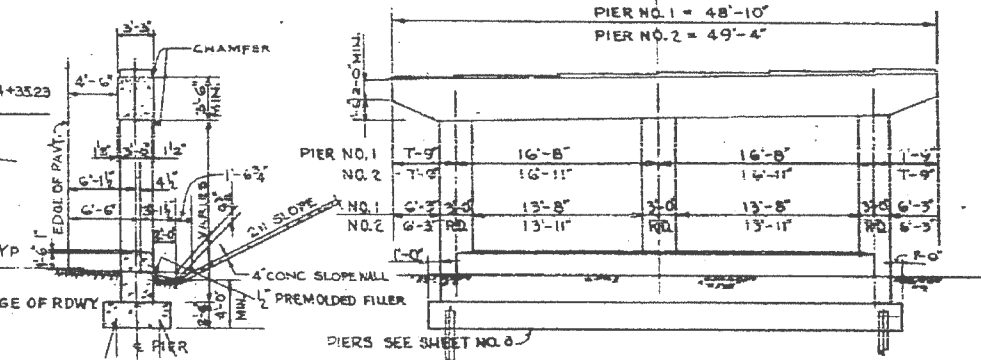
12 SHEETS



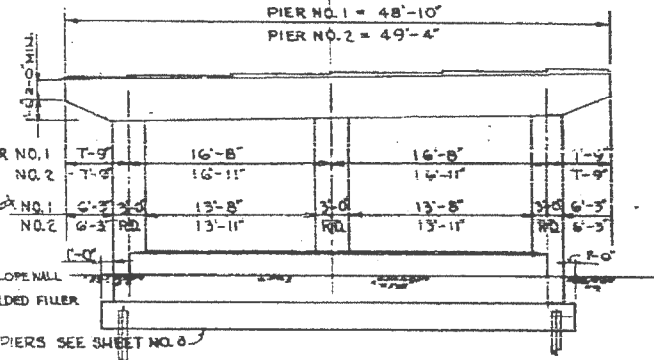
DECK SECTION A-A
SCALE 1/4" = 1'-0"



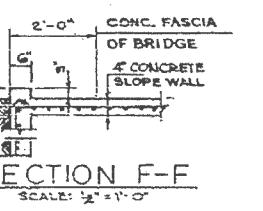
PLAN
SCALE 1/4" = 1'-0"



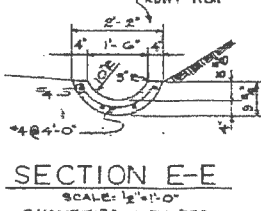
SECTION B-B
SCALE 1/4" = 1'-0"



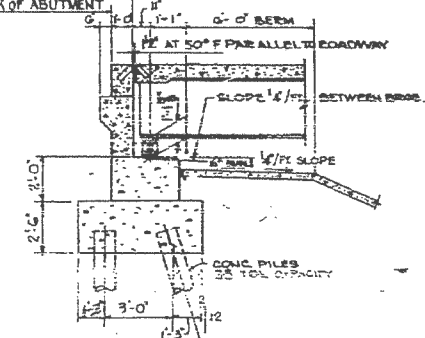
PIER ELEVATION
SCALE 1/4" = 1'-0"



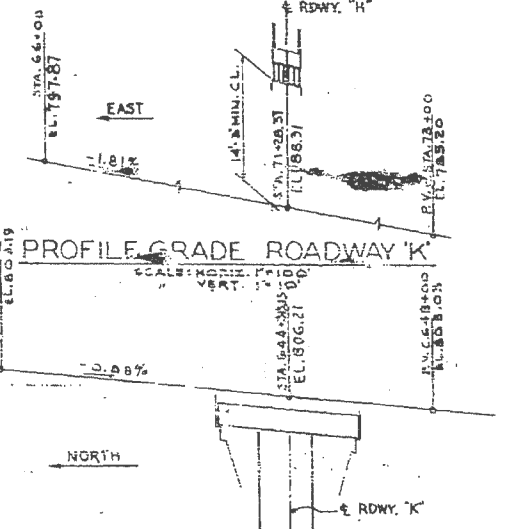
SECTION F-F
SCALE 1/2" = 1'-0"



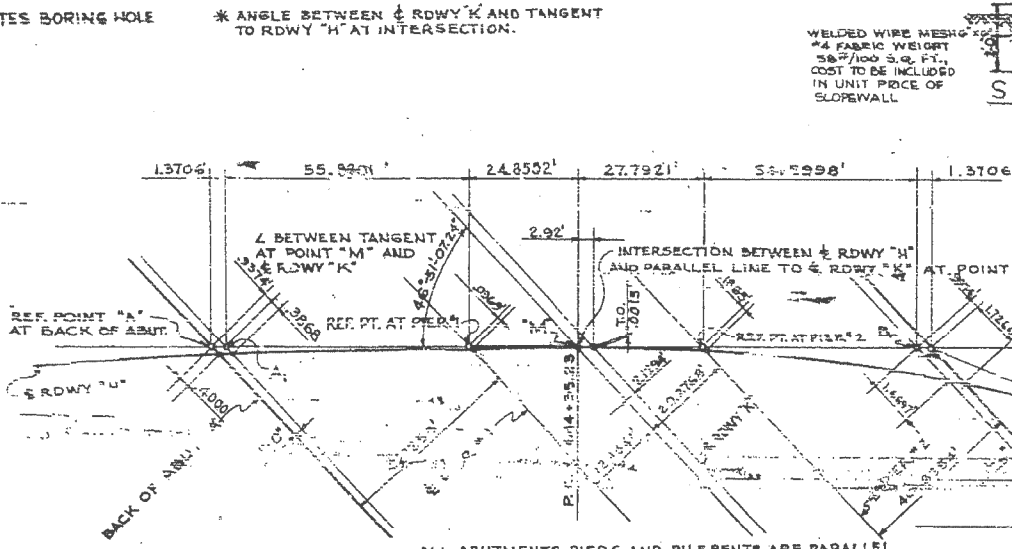
SECTION E-E
SCALE 1/2" = 1'-0"



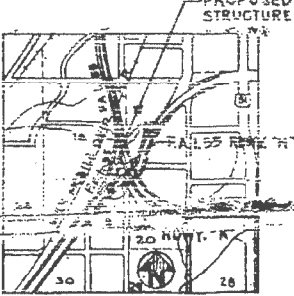
SECTION C-C
SCALE 1/4" = 1'-0"



PROFILE GRADE ROADWAY 'K'
SCALE: HORIZ. 1" = 20'-0"



KEY PLAN
SCALE: 1" = 20'-0"



LOCATION PLAN

DESIGN LOADING A.A.S.HO H20-S16-44
AND ALTERNATE

GENERAL PLAN & ELEVATION
EAL 55 SECTION 57-7NB-2
F.A.L 55 (RDWY 'H') OVER RDWY 'K'
MCLEAN COUNTY
STATION 644+38.15H

DE LEUW, CATHY & CO. ENGINEERS
DESIGNED BY: J. THEODORIS
DRAWN BY: J. SIRAITIS
CHECKED: R. S. HEIER & W. L. LARKIN, E.F.D.M.
IN CHARGE: L. M. RIAN, A.F.MOREL

FILE NAME	USER NAME	DESIGNED	REVISED	STATE OF ILLINOIS DEPARTMENT OF TRANSPORTATION	GENERAL PLAN & ELEVATION / S.N. 057-0004 (EXISTING) (FOR INFORMATION ONLY)	F.A.I. RTE.	SECTION	COUNTY	TOTAL SHEETS	SHEET NO.
...D578520-shr-GPE_057-0004.dgn	SJS	-	-			55	(57-7NB-2 & 57-7NB-1)BR	MCLEAN	153	105
		DRAWN	REVISED							
		CHECKED	REVISED							
		DATE	REVISED							

SCALE: SHEET NO. OF SHEETS STA. TO STA.

ILLINOIS FED. AID PROJECT CONTRACT NO. 70520

