

STATE OF ILLINOIS
DEPARTMENT OF TRANSPORTATION
DIVISION OF HIGHWAYS
**PROPOSED
HIGHWAY PLANS**

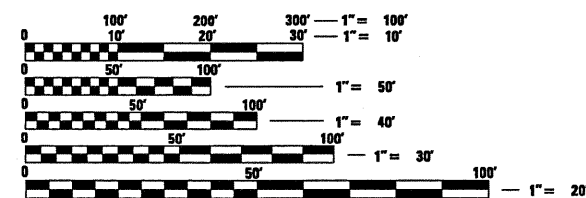
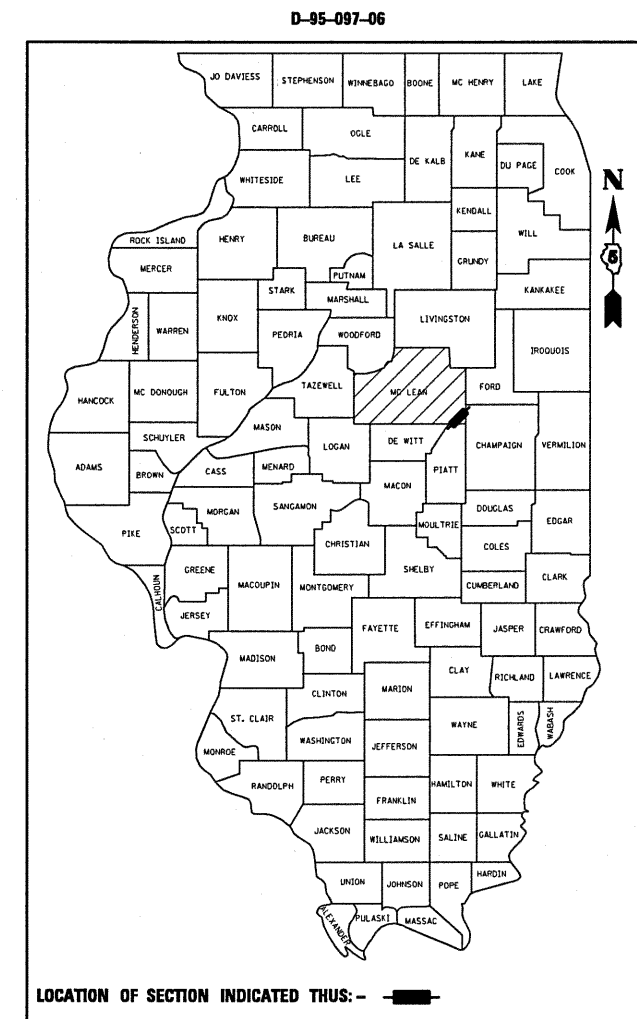
FOR INDEX OF SHEETS, SEE SHEET NO. 2

DESIGN DESIGNATION: 110(29) MINOR ARTERIAL 3.59 (FD-20)
CURRENT ADT (2009): 1,150 VEHICLES PER DAY
% P.C. = 72.1 (829)
% S.U. = 9.2 (106)
% M.U. = 18.7 (215)

FAP ROUTE 71 (IL 54)
SECTION 121R
PROJECT HSIP-0071(118)
HORIZONTAL REALIGNMENT
1 MI S. OF BELLFLOWER
MCLEAN COUNTY

C-95-097-06

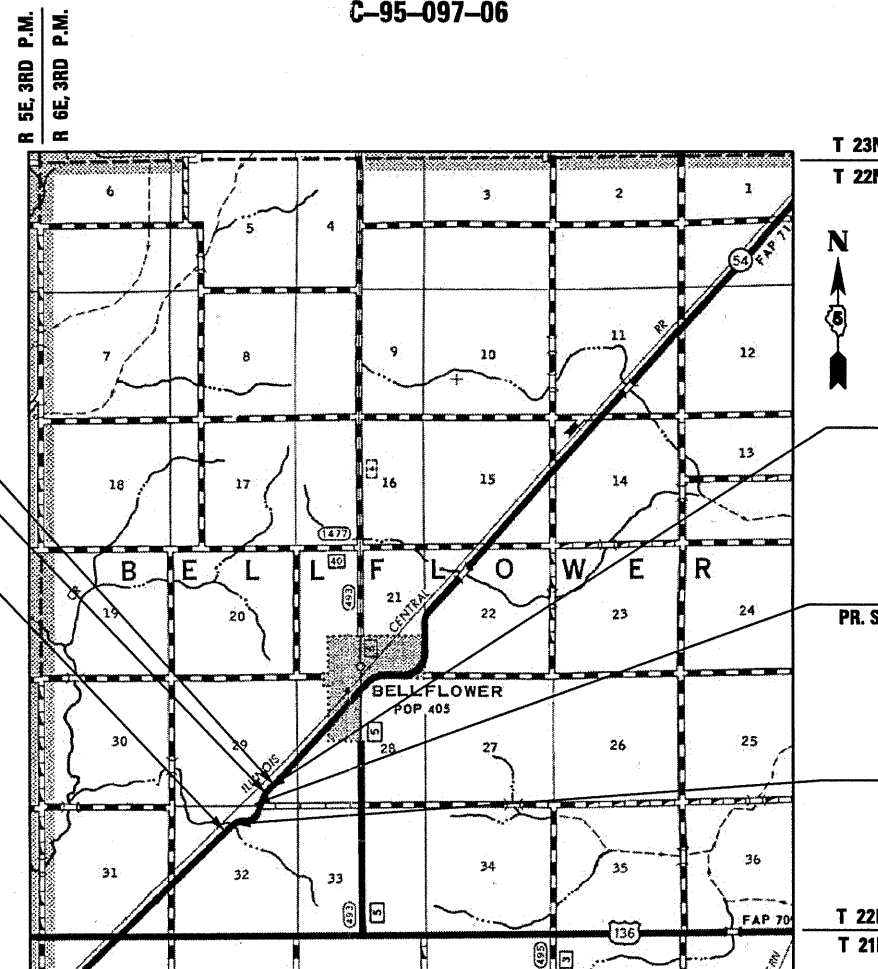
F.A.P. RTE.	SECTION	COUNTY	TOTAL SHEETS	SHEET NO.
71	121R	MCLEAN	87	1
		ILLINOIS	CONTRACT NO. 70592	



FULL SIZE PLANS HAVE BEEN PREPARED USING STANDARD ENGINEERING SCALES. REDUCED SIZED PLANS WILL NOT CONFORM TO STANDARD SCALES. IN MAKING MEASUREMENTS ON REDUCED PLANS, THE ABOVE SCALES MAY BE USED.

J.U.L.I.E.
JOINT UTILITY LOCATION INFORMATION FOR EXCAVATION
1-800-892-0123
OR 811 BELLFLOWER TOWNSHIP

PROJECT ENGINEER: KEVIN TRAPP
PROJECT MANAGER: RUSTIN KEYS
PHONE (217) 465-4181
CONTRACT NO. 70592



SECTION 121R ENDS
STA. 395+00.00

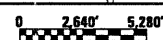
STATION EQUATION
STA. 389+63.66 (BK) =
STA. 390+79.19 (AH)

SECTION 121R BEGINS
STA. 360+00.00

PROPOSED STRUCTURE
PR. S.N. 057-2049, STA. 388+50.00
2@12'x3'x39' PRCBC WITH
PRC END SECTIONS
NO SKEW

PROPOSED STRUCTURE
PR. S.N. 057-2048, STA. 0+76.31 (TR 547)
2@12'x3'x97' PRCBC WITH
PRC END SECTIONS
NO SKEW

STRUCTURE REPLACEMENT
EX. S.N. 057-8001, STA. 363+70
PR. S.N. 057-2047, STA. 363+70
2@12'x6'x54' PRCBC WITH
C.I.P. APRON END SECTIONS
NO SKEW



GROSS LENGTH = 3,384.47 FT. = 0.641 MILE
NET LENGTH = 3,384.47 FT. = 0.641 MILE

STATE OF ILLINOIS
DEPARTMENT OF TRANSPORTATION
DIVISION OF HIGHWAYS

SUBMITTED July 30 2010
Joseph E. Bond, Jr.
DEPUTY DIRECTOR OF HIGHWAYS, REGION ENGINEER

October 1 2010
Scott E. Stitt, P.E.
Acting ENGINEER OF DESIGN AND ENVIRONMENT

October 1 2010
Christine M. Reed
DIRECTOR OF HIGHWAYS, CHIEF ENGINEER

**PRINTED BY THE AUTHORITY
OF THE STATE OF ILLINOIS**