

STATE OF ILLINOIS  
DEPARTMENT OF TRANSPORTATION  
DIVISION OF HIGHWAYS

**PROPOSED  
HIGHWAY PLANS**

FAS ROUTE 2484 (IL 165)

SECTION 124BR-1

PROJECT ACRS-2484(107)

BRIDGE REPLACEMENT

MCLEAN COUNTY

MONEY CREEK 2.9 MI. N. OF IL 9

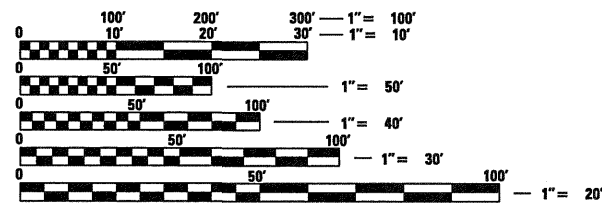
C-95-126-06

F.A.S. RTE.	SECTION	COUNTY	TOTAL SHEETS	SHEET NO.
2484	124BR-1	MCLEAN	55	1
FED. ROAD DIST. NO. 5	ILLINOIS	CONTRACT NO. 70612		

D-95-126-06



FOR INDEX OF SHEETS, SEE SHEET NO. 2



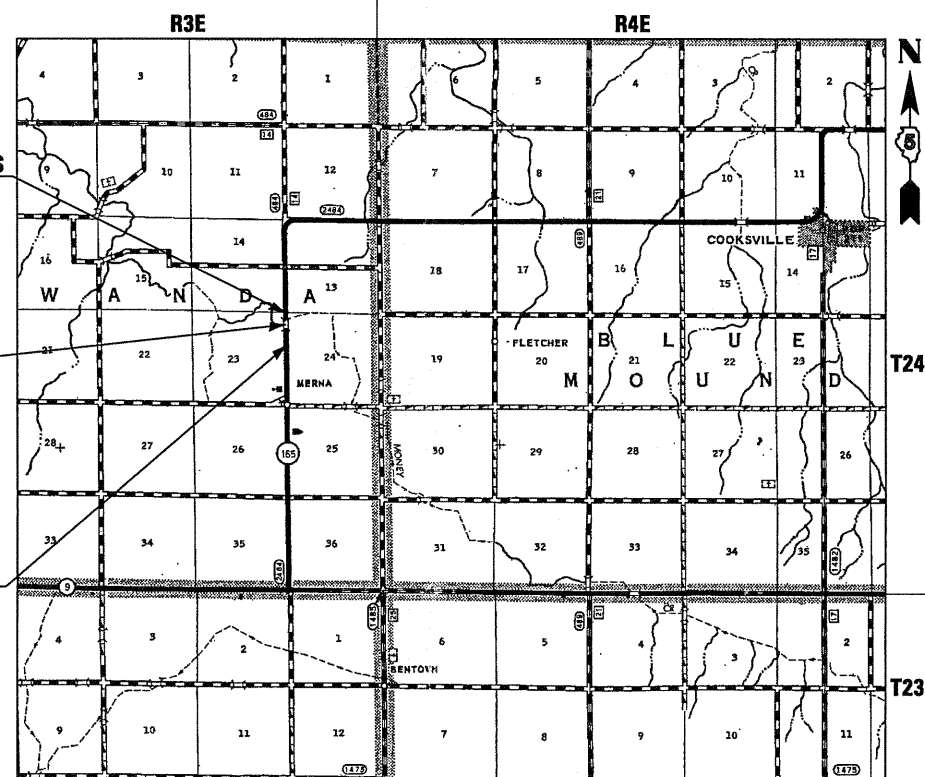
FULL SIZE PLANS HAVE BEEN PREPARED USING STANDARD ENGINEERING SCALES. REDUCED SIZED PLANS WILL NOT CONFORM TO STANDARD SCALES. IN MAKING MEASUREMENTS ON REDUCED PLANS, THE ABOVE SCALES MAY BE USED.

MAJOR COLLECTOR - NON-URBAN  
ADT=650 (2007)  
SU=9.0%, MU=4.4%  
PC=86.6%

PROPOSED SN 057-0248  
STATION 152+31.00 (IL RTE 165)  
3-SPANS @ 117'-0" B-B ABUTS.  
32'-0" REINF. CONC. DECK  
SKEW = 0 DEGREES

PROPOSED IMPROVEMENT ENDS  
Sta. 154+00.00

PROPOSED IMPROVEMENT BEGINS  
Sta. 151+00.00



LOCATION MAP



GROSSNET LENGTH = 300 FT. = 0.057 MILE

J.U.L.I.E.  
JOINT UTILITY LOCATION INFORMATION FOR EXCAVATION  
1-800-892-0123 TOWANDA TWP. - MCLEAN CO.  
OR 811

PROJECT ENGINEER: JASON STULTS  
CONSULTANT LIAISON: RUSTIN KEYS  
DISTRICT 5 PHONE NUMBER: (217) 465-4181

CONTRACT NO. 70612

STATE OF ILLINOIS  
DEPARTMENT OF TRANSPORTATION  
DIVISION OF HIGHWAYS

SUBMITTED 8/10 2010  
Jason L. Gowen  
DEPUTY DIRECTOR OF HIGHWAYS, REGION ENGINEER

October 1 2010  
Scott E. Stitt, P.E., I.B.  
acting ENGINEER OF DESIGN AND ENVIRONMENT

October 1 2010  
Christine M. Reed, I.B.  
DIRECTOR OF HIGHWAYS, CHIEF ENGINEER

BLANK, WESSELINK, COOK & ASSOCIATES  
ENGINEERS - CONSULTANTS  
DECATUR, ILLINOIS



Charles W. Guthrie, Jr.  
CHARLES W. GUTHRIE, JR., P.E.

DATE August 4 2010

EXPIRES NOVEMBER 30, 2011

PRINTED BY THE AUTHORITY  
OF THE STATE OF ILLINOIS