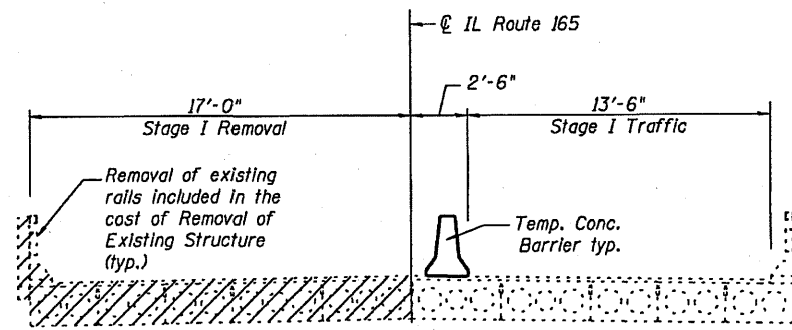
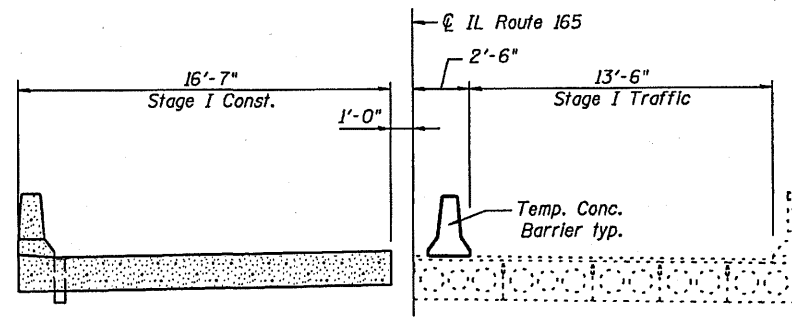


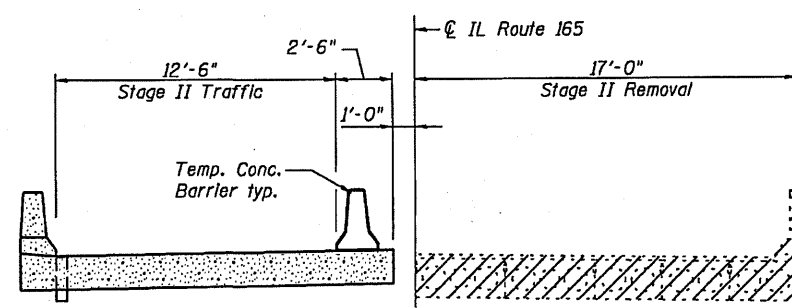
STATE OF ILLINOIS
DEPARTMENT OF TRANSPORTATION



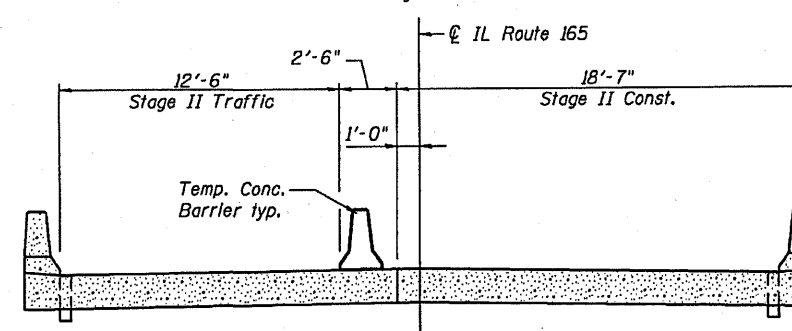
STAGE I REMOVAL
(Looking North)



STAGE I CONSTRUCTION
(Looking North)



STAGE II REMOVAL
(Looking North)

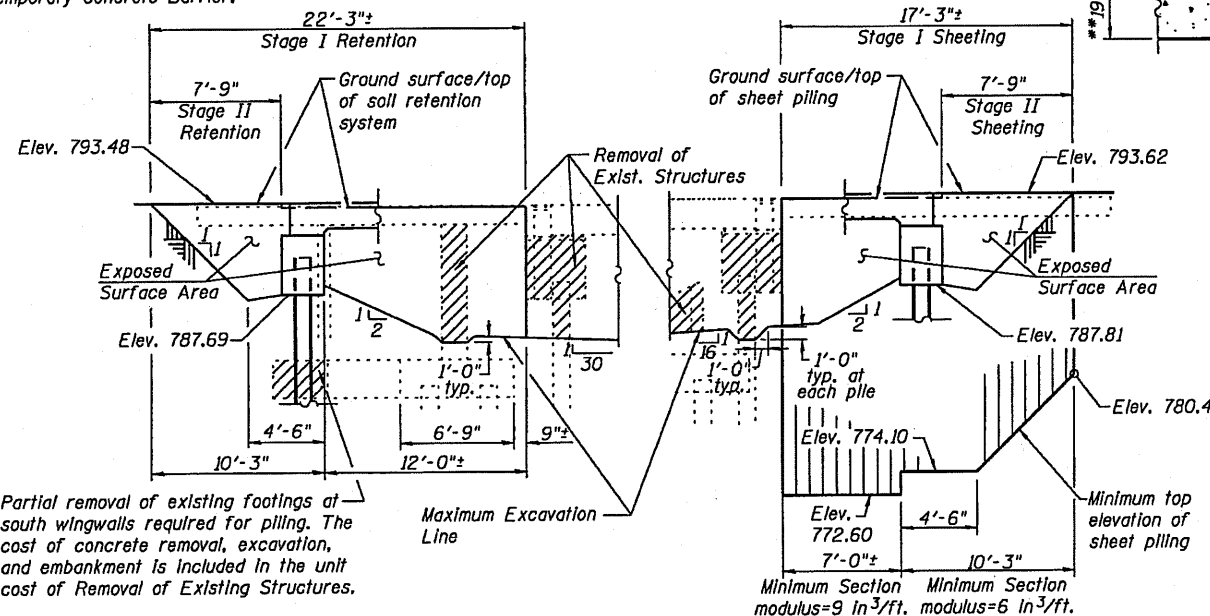


STAGE II CONSTRUCTION
(Looking North)

DESIGNED	PBB/SAL
CHECKED	RKM/MCB
DRAWN	MLO
CHECKED	PBB

200
EXAMINED
PASSED
ENGINEER OF BRIDGE DESIGN
ENGINEER OF BRIDGES AND STRUCTURES

Note:
See Roadway Plans for quantity of temporary concrete barriers. See Sheet 7 of 17 for details of Temporary Concrete Barrier.



Note:
A cantilevered sheet piling design does not appear feasible at the South Abutment and additional members or other retention systems may be necessary. The Contractor shall submit a temporary soil retention system design including plan details and calculations for review and acceptance by the Engineer.

TEMPORARY SOIL RETENTION SYSTEM
(S. Abut.)

GENERAL NOTES

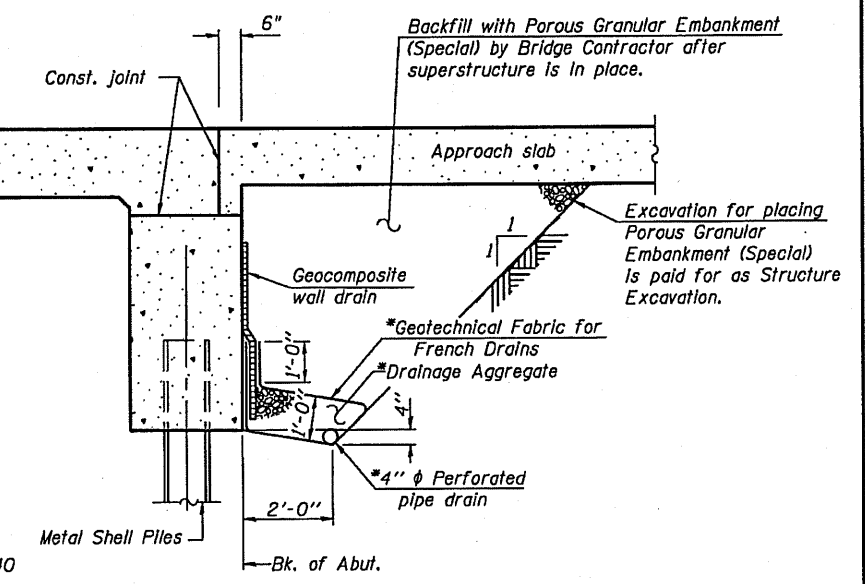
- Reinforcement bars designated (E) shall be epoxy coated.
- Reinforcement bars shall conform to the requirements of ASTM A706 Gr 60. See Special Provisions.
- Layout of the slope protection system may be varied to suit ground conditions in the field as directed by the Engineer.
- The Contractor shall make allowance for the deflection of forms, shrinkage and settlement of falsework. In addition to allowance for dead load deflection. Forms for deck slab shall be removed prior to placement of bridge approach slab.
- The Contractor is advised that the existing structure contains members that are in a deteriorated condition with reduced load carrying capacity. It is the Contractor's responsibility to account for the condition of the existing structure when developing construction procedures for the complete or partial removal, or replacement of the structure. An Existing Structure Information Package is available upon request as noted in the special provisions.
- The approach slabs and bridge deck slabs are to be ground to elevations and grades indicated. See special provisions for additional requirements.
- Slip forming of parapet shall not be allowed.
- An aluminum tablet of the type shown on standard 667101 shall be placed on the proposed structure as directed by the engineer. The bench mark elevation will be established and marked by the department. This work will be paid for at the contract unit price Each for Permanent Bench Marks.

Current Ratings on File for Existing Structure:

Inventory: HS: 17.9
Operating: HS: 28.6
Live Load Restrictions: No
Inventory and Operating Ratings and Live Load Restrictions are provided for information only. Inventory and Operating Ratings are based on HS loading and configuration. Live Load Restrictions are based on Illinois legal loads and configurations. The Ratings and Live Load Restrictions are not necessarily representative of capacities to support the Contractor's equipment.

TEMPORARY SHEET PILING
(N. Abut.)

Note:
If the Contractor chooses to alter the temporary cantilevered sheet piling design requirements shown on the plans, a design submittal including plan details and calculations will be required for review and acceptance by the Engineer.



SECTION THRU INTEGRAL ABUTMENT
(Horiz. dim. @ Rt. L's)

*Included in the cost of Pipe Underdrains for Structures 4".
** Prior to Grinding.
Note:
All drainage system components shall extend to 2'-0" from the end of each wingwall except an outlet pipe shall extend until intersecting with the side slopes. The pipes shall drain into concrete headwalls. The cost of the concrete headwalls shall be included in the cost of Pipe Underdrains for Structures. (See Article 601.05 of the Standard Specifications and Highway Standard 601101).

TOTAL BILL OF MATERIAL

ITEM	UNIT	SUPER	SUB	TOTAL
Porous Granular Embankment, Special	Cu. Yd.		76	76
Stone Riprap, Class A4	Sq. Yd.		809	809
Filter Fabric	Sq. Yd.		809	809
Removal of Existing Structures	Each		1	1
Structure Excavation	Cu. Yd.		287	287
Floor Drains	Each	14		14
Concrete Structures	Cu. Yd.		123.0	123.0
Concrete Superstructure	Cu. Yd.	392.1		392.1
** Bridge Deck Grooving	Sq. Yd.	587		587
Concrete Encasement	Cu. Yd.		7.2	7.2
** Protective Coat	Sq. Yd.	754		754
Reinforcement Bars, Epoxy Coated	Pound	94,830	11,410	106,240
Bar Splicers	Each	410	64	474
Furnishing Metal Shell Piles 14"x0.250"	Foot		1,774	1,774
Driving Piles	Foot		1,774	1,774
Test Pile Metal Shells	Each		3	3
Temporary Soil Retention System	Sq. Ft.		178	178
Temporary Sheet Piling	Sq. Ft.		329	329
Name Plates	Each	1		1
Geocomposite Wall Drain	Sq. Yd.		37	37
Pipe Underdrains for Structures 4"	Foot		124	124
Underwater Structure Excavation Protection - Location 1	Each		1	1
Underwater Structure Excavation Protection - Location 2	Each		1	1
** Diamond Grinding (Bridge Section)	Sq. Yd.	548		548
Mechanical Splicers	Each		72	72
Permanent Bench Marks	Each	1		1

** Includes Approaches

GENERAL DATA
STRUCTURE NO. 057-0248

SHEET NO. 2	F.A.S. RTE. 2484	SECTION 124BR-1	COUNTY MCLEAN	TOTAL SHEETS 55	SHEET NO. 26
17 SHEETS	CONTRACT NO. 70612				
FED. ROAD DIST. NO. - ILLINOIS FED. AID PROJECT					