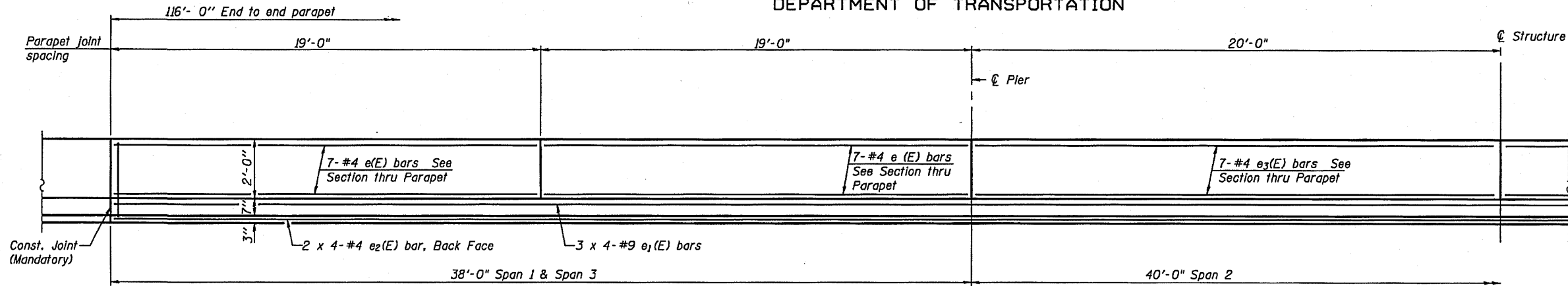
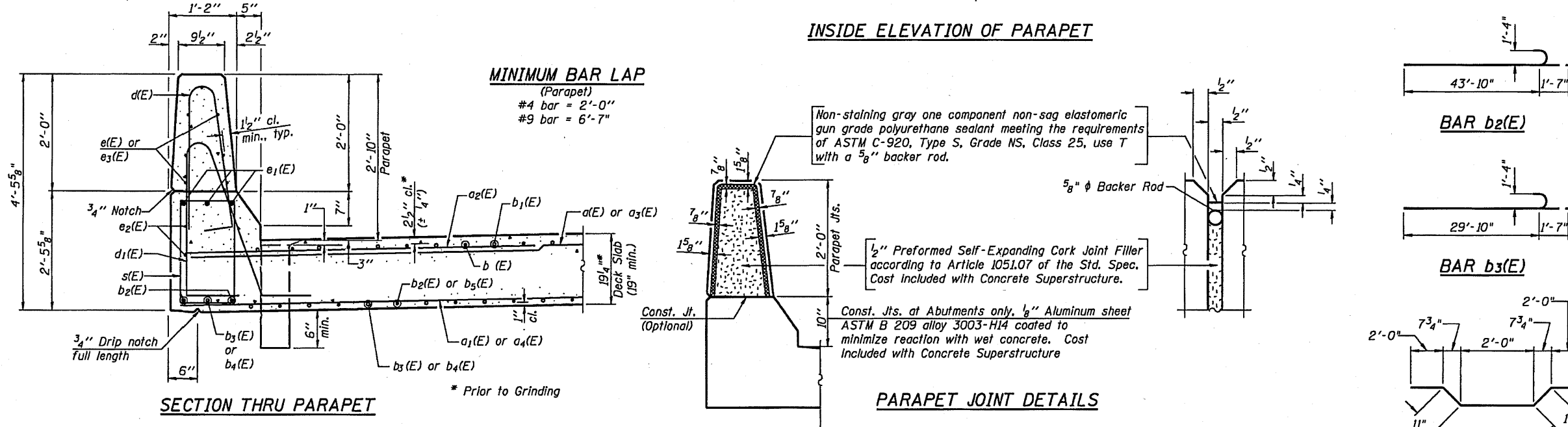


STATE OF ILLINOIS
DEPARTMENT OF TRANSPORTATION

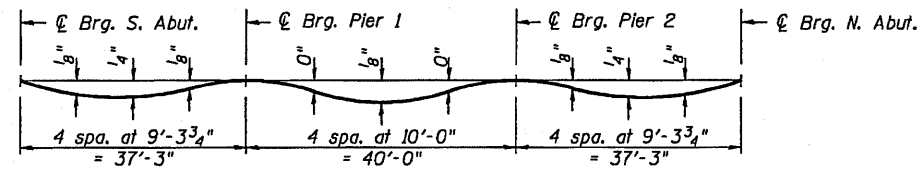


INSIDE ELEVATION OF PARAPET

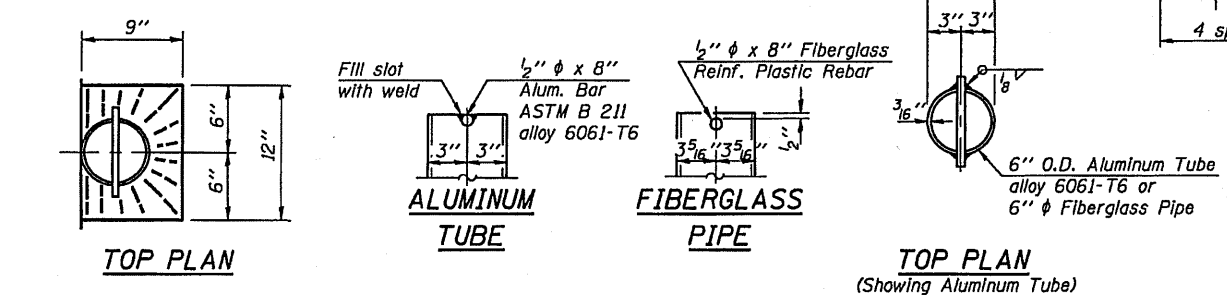


SUPERSTRUCTURE
BILL OF MATERIAL

| Bar | No. | Size | Length | Shape | |
|----------------------------------|-----|------|---------|----------|--------|
| a(E) | 78 | #5 | 18'-3" | — | |
| a1(E) | 150 | #5 | 18'-5" | — | |
| a2(E) | 154 | #6 | 6'-6" | — | |
| a3(E) | 78 | #5 | 16'-3" | — | |
| a4(E) | 150 | #5 | 16'-5" | — | |
| b(E) | 152 | #9 | 33'-5" | — | |
| b1(E) | 78 | #9 | 12'-4" | — | |
| b2(E) | 72 | #9 | 45'-5" | — | |
| b3(E) | 70 | #9 | 31'-5" | — | |
| b4(E) | 35 | #9 | 23'-8" | — | |
| b5(E) | 36 | #9 | 44'-4" | — | |
| d(E) | 256 | #5 | 5'-7" | — | |
| d1(E) | 256 | #5 | 8'-7" | — | |
| e(E) | 56 | #4 | 18'-9" | — | |
| e1(E) | 24 | #9 | 33'-10" | — | |
| e2(E) | 16 | #4 | 30'-5" | — | |
| e3(E) | 28 | #4 | 19'-9" | — | |
| s(E) | 256 | #5 | 7'-1" | — | |
| s1(E) | 72 | #5 | 7'-10" | — | |
| s2(E) | 72 | #5 | 5'-9" | — | |
| Reinforcement Bars, Epoxy Coated | | | | Pound | 67,990 |
| Concrete Superstructure | | | | Cu. Yds. | 279.1 |
| Bar Splicers | | | | Each | 228 |
| Floor Drains | | | | Each | 14 |

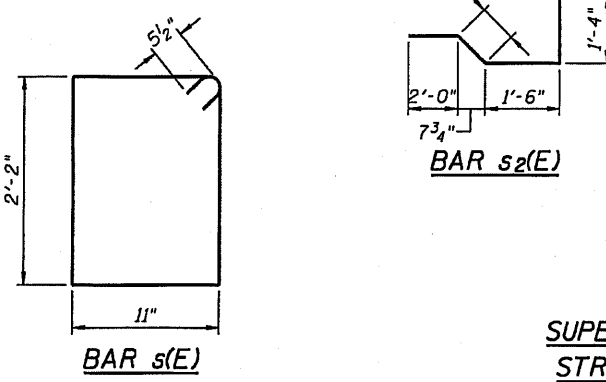
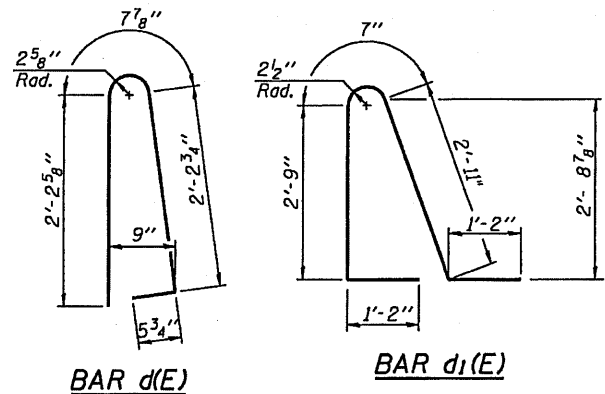


Bars indicated thus 2 x 4 - #4 etc. indicates 2 lines of bars with 4 lengths per line.



DEAD LOAD DEFLECTION DIAGRAM

(Includes weight of concrete only.)



SUPERSTRUCTURE DETAILS
STRUCTURE NO. 057-0248

| | |
|----------|---------|
| DESIGNED | PBB/SAL |
| CHECKED | RKM/MCB |
| DRAWN | MLO |
| CHECKED | PBB |

| | |
|----------|------------------------------------|
| EXAMINED | 200 |
| PASSED | ENGINEER OF BRIDGE DESIGN |
| | ENGINEER OF BRIDGES AND STRUCTURES |

Notes:
The exterior surfaces of the floor drains shall be coated or pigmented by the manufacturer with a color that matches the concrete.
Fiberglass pipe shall conform to ASTM D 2996, with short-time rupture strength hoop tensile stress of 30,000 p.s.i. minimum.

| | | | | | |
|---|---------------------|--------------------|------------------|--------------------|-----------------|
| SHEET NO. 4 17 SHEETS | F.A.S. RTE. 2484 | SECTION 124BR-1 | COUNTY MCLEAN | TOTAL SHEETS 55 | SHEET NO. 28 |
| | CONTRACT NO. 70612 | | | | |
| FED. ROAD DIST. NO. ILLINOIS FED. AID PROJECT | | | | | |