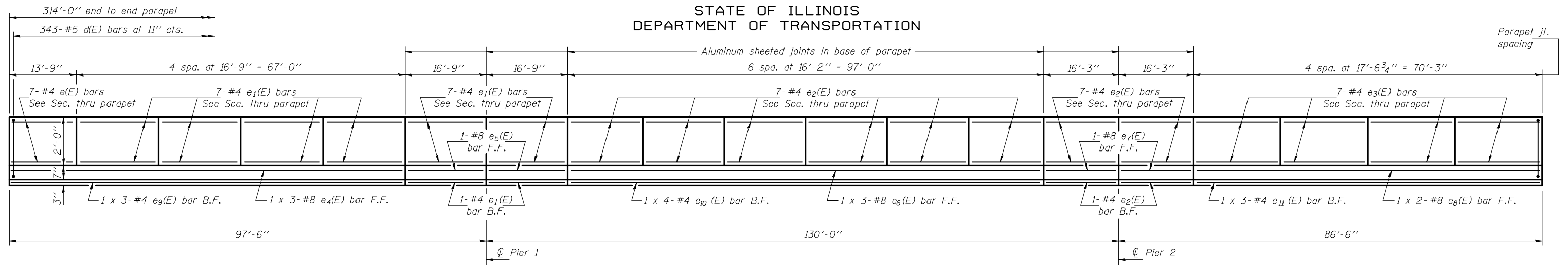
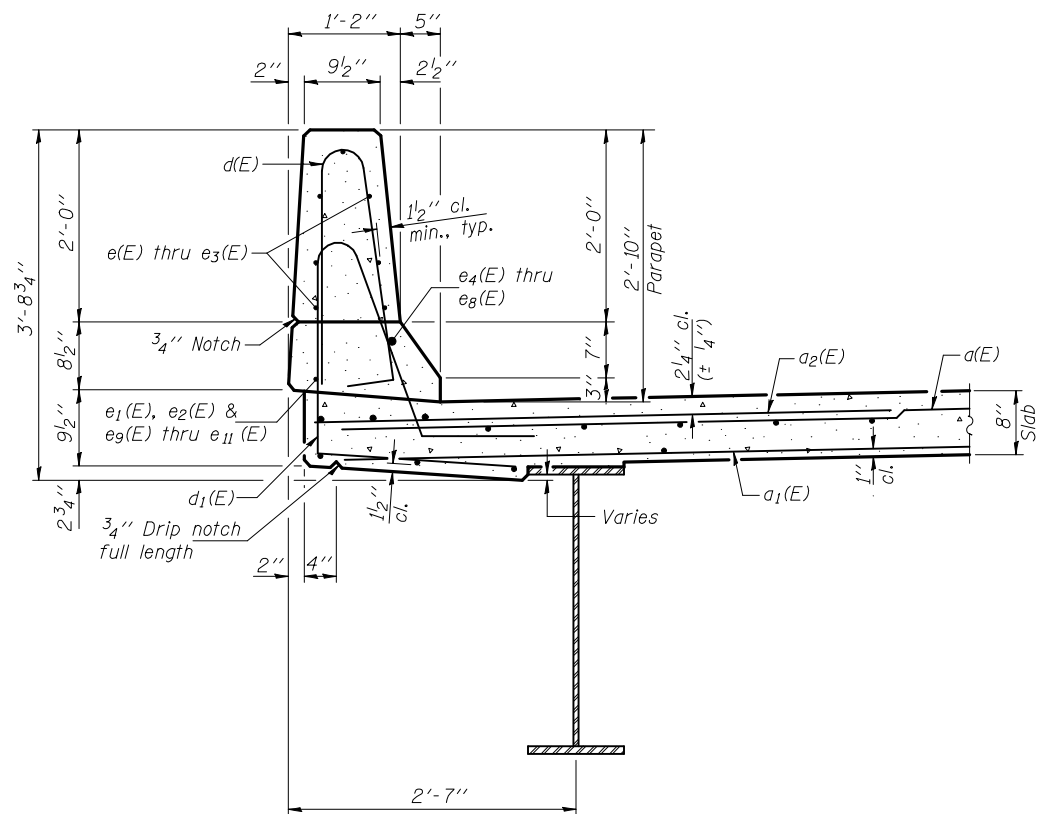


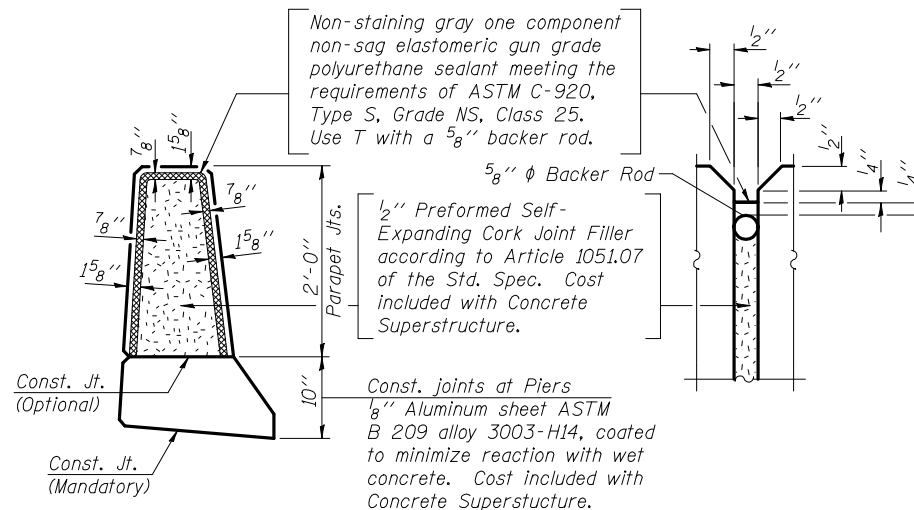
STATE OF ILLINOIS
DEPARTMENT OF TRANSPORTATION



INSIDE ELEVATION OF PARAPET



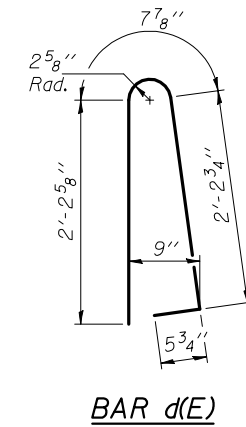
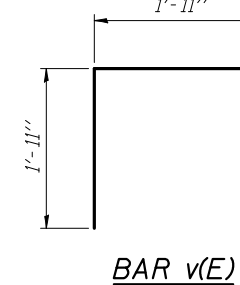
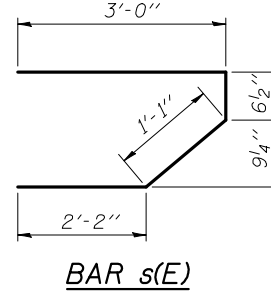
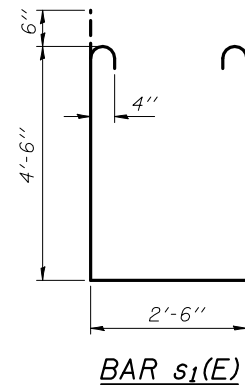
SECTION THRU PARAPET



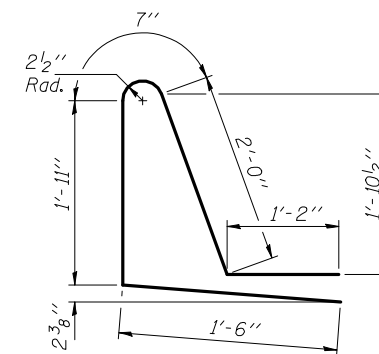
PARAPET JOINT DETAILS

MIN. BAR LAPS

(Parapet)
#4 bar = 2'-0"
#8 bar = 5'-2"



BAR d(E)



BAR d1(E)

SUPERSTRUCTURE
BILL OF MATERIAL

Bar	No.	Size	Length	Shape
a(E)	538	#5	34'-7"	—
a1(E)	377	#5	32'-10"	—
a2(E)	1076	#6	6'-6"	—
a3(E)	4	#5	37'-11"	—
b(E)	418	#5	31'-6"	—
b1(E)	105	#6	21'-5"	—
b2(E)	105	#6	21'-9"	—
b3(E)	372	#5	29'-2"	—
d(E)	686	#5	5'-7"	U
d1(E)	686	#5	7'-2"	U
e(E)	14	#4	13'-6"	—
e1(E)	88	#4	16'-6"	—
e2(E)	116	#4	15'-11"	—
e3(E)	56	#4	17'-3"	—
e4(E)	6	#8	30'-4"	—
e5(E)	4	#8	16'-6"	—
e6(E)	6	#8	35'-10"	—
e7(E)	4	#8	16'-0"	—
e8(E)	4	#8	37'-7"	—
e9(E)	6	#4	28'-2"	—
e10(E)	8	#4	25'-9"	—
e11(E)	6	#4	24'-8"	—
m(E)	20	#6	22'-1"	—
m1(E)	8	#6	8'-2"	—
m2(E)	16	#6	10'-10"	—
m3(E)	10	#6	6'-9"	—
m4(E)	4	#6	2'-9"	—
s(E)	72	#5	6'-10"	U
s1(E)	62	#4	12'-6"	U
v(E)	72	#5	3'-10"	Γ
Reinforcement Bars, Epoxy Coated			Pound	91560
Concrete Superstructure			Cu. Yds.	388.4

Bars indicated thus 1 x 3-#4 etc. indicates 1 line of bars with 3 lengths per line.

SUPERSTRUCTURE DETAILS
STRUCTURE NO. 084-0517

DESIGNED Nicholas R. Barnett
CHECKED Michael D. Rolape
DRAWN h.t. duong
CHECKED NRB/MDR

September 17, 2018
EXAMINED Thomas J. Domagalick
PASSED Ralph E. Anderson

SHEET NO. 11 27 SHEETS	F.A.U. RTE.	SECTION	COUNTY	TOTAL SHEETS	SHEET NO.
	8159	110X-3VB-4	SANGAMON	78	36
CONTRACT NO. 72692					
ILLINOIS FED. AID PROJECT					