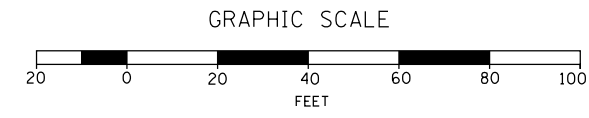
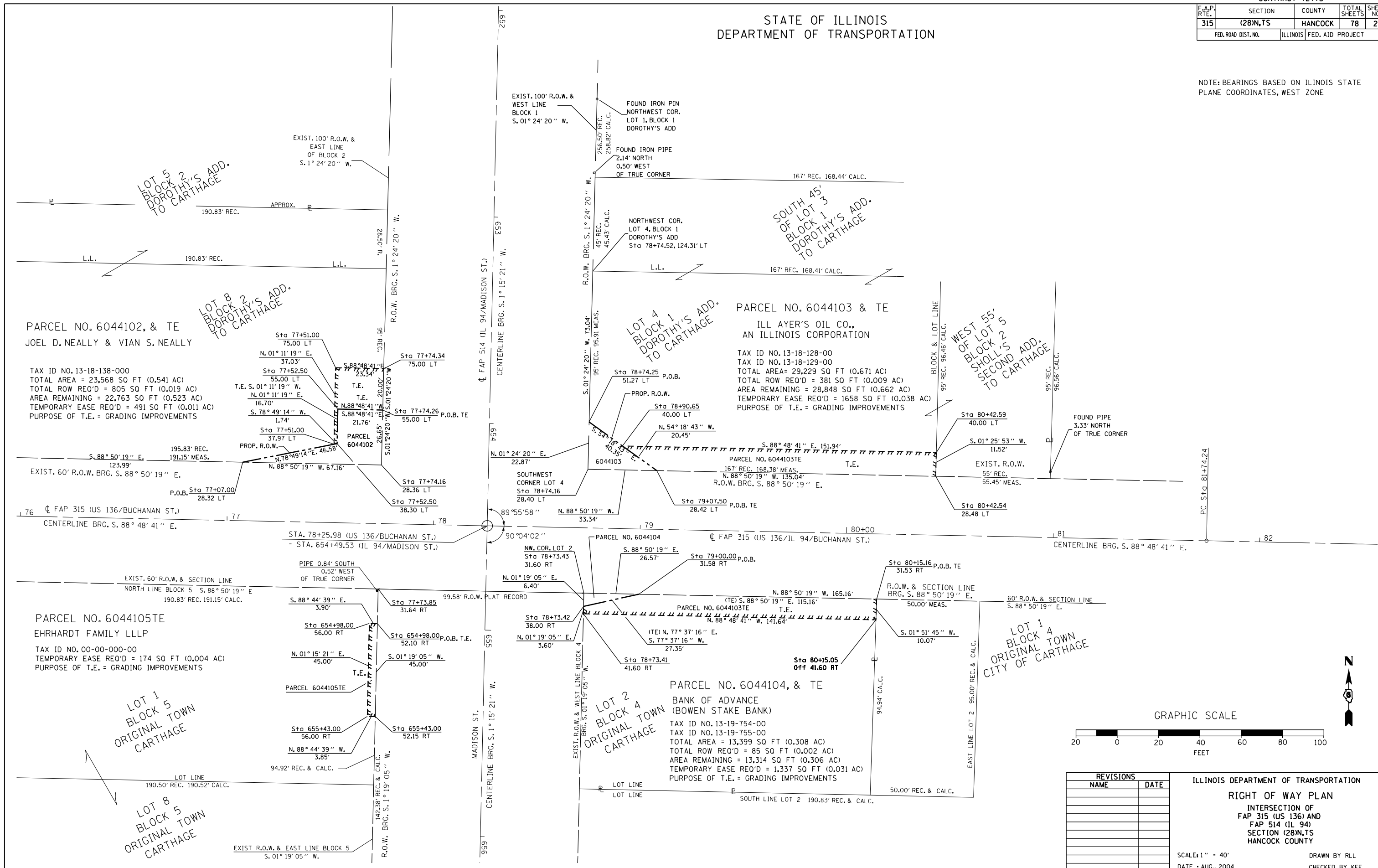


F.A.P. RTE.	SECTION	COUNTY	TOTAL SHEETS	SHEET NO.
315	(28)N,TS	HANCOCK	78	23
FED. ROAD DIST. NO.		ILLINOIS	FED. AID PROJECT	

STATE OF ILLINOIS  
DEPARTMENT OF TRANSPORTATION

NOTE: BEARINGS BASED ON ILLINOIS STATE PLANE COORDINATES, WEST ZONE



REVISIONS	
NAME	DATE

ILLINOIS DEPARTMENT OF TRANSPORTATION  
**RIGHT OF WAY PLAN**  
INTERSECTION OF  
FAP 315 (US 136) AND  
FAP 514 (IL 94)  
SECTION (28)N,TS  
HANCOCK COUNTY

SCALE: 1" = 40'  
DATE: AUG., 2004

DRAWN BY: RLL  
CHECKED BY: KEF