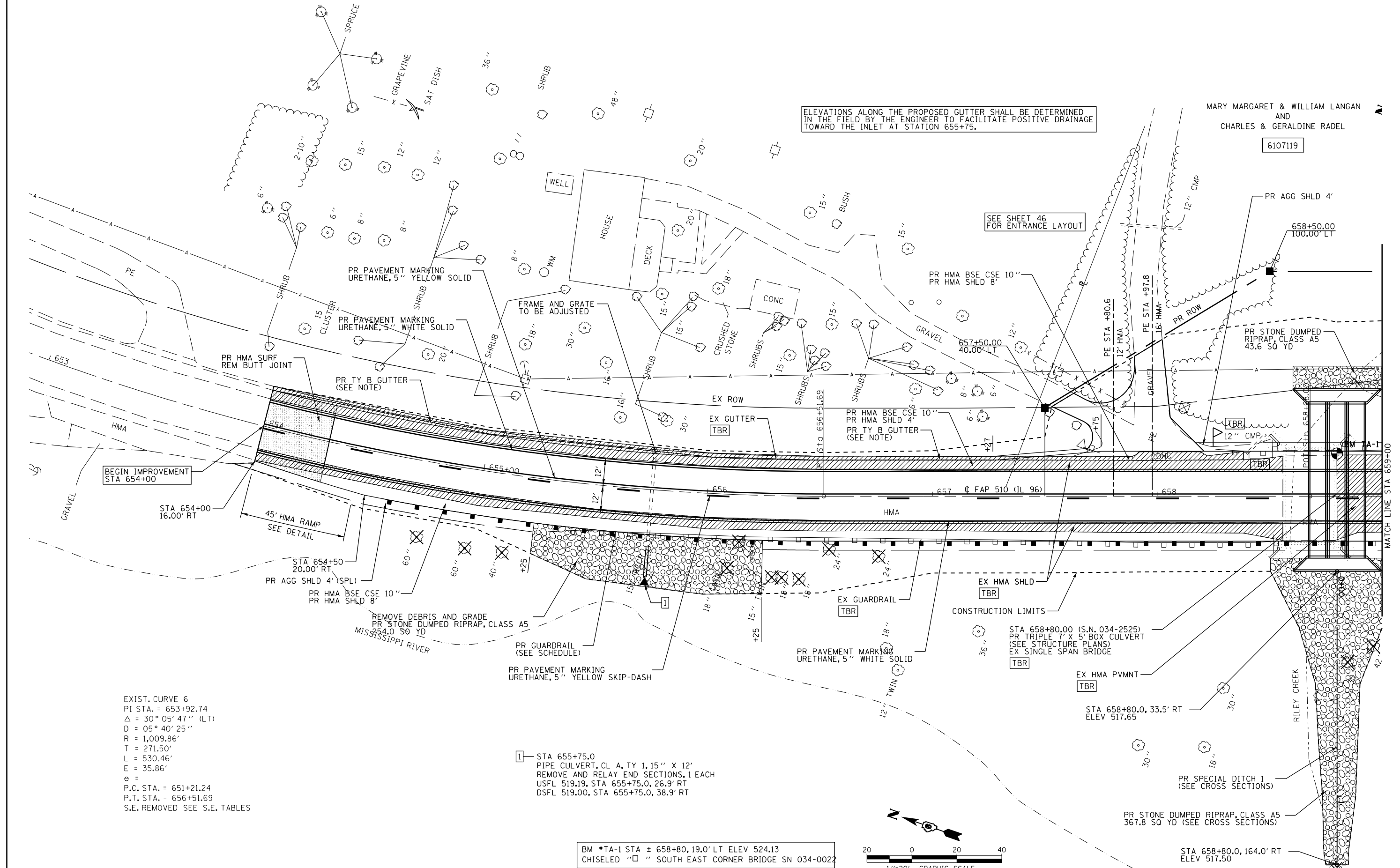


MARY MARGARET & WILLIAM LANGAN  
AND  
CHARLES & GERALDINE RADEL  
6107119

ELEVATIONS ALONG THE PROPOSED GUTTER SHALL BE DETERMINED IN THE FIELD BY THE ENGINEER TO FACILITATE POSITIVE DRAINAGE TOWARD THE INLET AT STATION 655+75.

SEE SHEET 46 FOR ENTRANCE LAYOUT

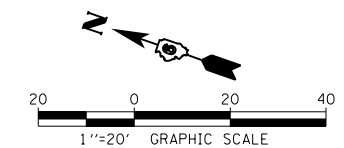


BEGIN IMPROVEMENT STA 654+00

EXIST. CURVE 6  
PI STA. = 653+92.74  
 $\Delta = 30^\circ 05' 47''$  (LT)  
 $D = 05^\circ 40' 25''$   
 $R = 1,009.86'$   
 $T = 271.50'$   
 $L = 530.46'$   
 $E = 35.86'$   
 $e =$   
P.C. STA. = 651+21.24  
P.T. STA. = 656+51.69  
S.E. REMOVED SEE S.E. TABLES

1 - STA 655+75.0  
PIPE CULVERT, CL. A, TY 1, 15" X 12"  
REMOVE AND RELAY END SECTIONS, 1 EACH  
USFL 519.19, STA 655+75.0, 26.9' RT  
DSFL 519.00, STA 655+75.0, 38.9' RT

BM \*TA-1 STA ± 658+80, 19.0' LT ELEV 524.13  
CHISELED " " SOUTH EAST CORNER BRIDGE SN 034-0022



FILE NAME =	USER NAME = laughl1n1	DESIGNED -	REVISED -
et:\pw\work\p1dot\laughl1n1\1d0229630\PP	01.dgn	DRAWN -	REVISED -
	PLOT SCALE = 40.0000' / in.	CHECKED -	REVISED -
	PLOT DATE = 8/9/2010	DATE -	REVISED -

STATE OF ILLINOIS  
DEPARTMENT OF TRANSPORTATION

SCALE: 1"=20'		SHEET NO. 1 OF 7 SHEETS		STA. 653+00 TO STA. 659+00	
---------------	--	-------------------------	--	----------------------------	--

F.A.P. RTE.	SECTION	COUNTY	TOTAL SHEETS	SHEET NO.
510	120 (B-4, B-5)	HANCOCK	80	24
CONTRACT NO. 72A65				
FED. ROAD DIST. NO.		ILLINOIS FED. AID PROJECT		