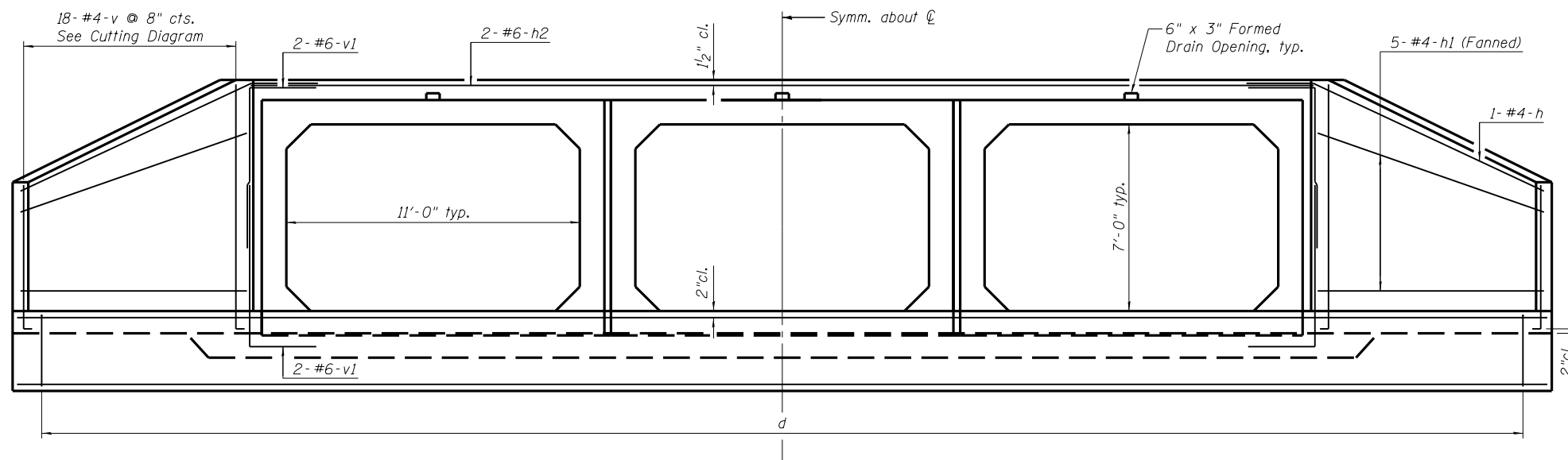
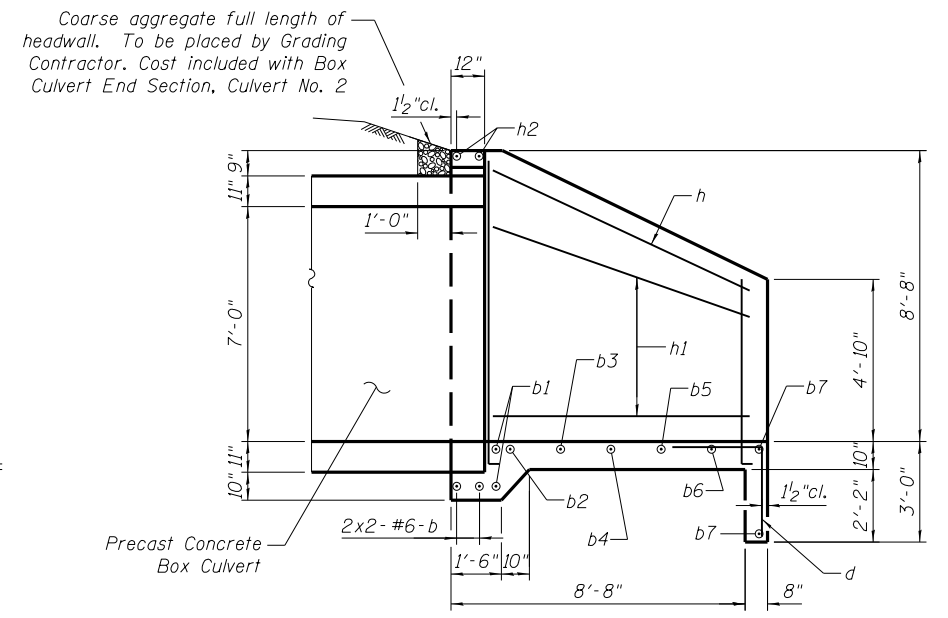


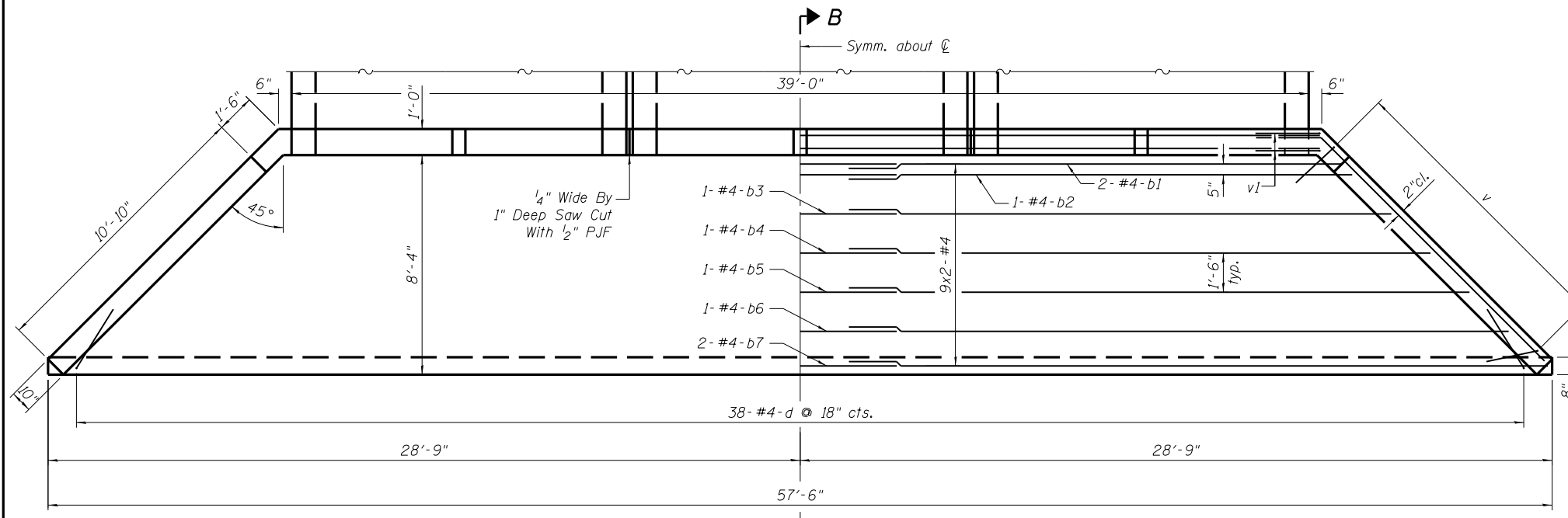
8/9/2010 7:33:42 AM



END ELEVATION



SECTION B-B



PLAN

SHOWING DIMENSIONS

SHOWING REINFORCEMENT

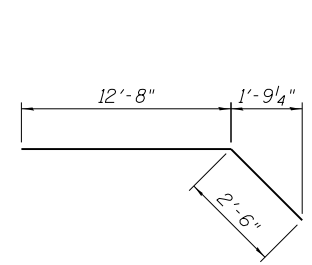
BILL OF MATERIAL

Bar	No.	Size	Length	Shape
b	4	#6	21'-1"	—
b1	4	#4	22'-0"	—
b2	2	#4	22'-3"	—
b3	2	#4	23'-9"	—
b4	2	#4	25'-3"	—
b5	2	#4	26'-9"	—
b6	2	#4	28'-3"	—
b7	4	#4	29'-5"	—
d	38	#4	5'-4"	┘
h	2	#4	15'-2"	—
h1	10	#4	12'-3"	—
h2	2	#6	39'-8"	—
v	18	#4	18'-8"	┘
v1	8	#6	8'-8"	┘
Reinforcement Bars			Pound	1,120
* Box Culvert End Section, Culvert No. 2			Each	1

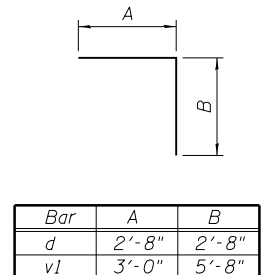
* West End Section = 25.2 Cu. Yd. Concrete

NOTES:

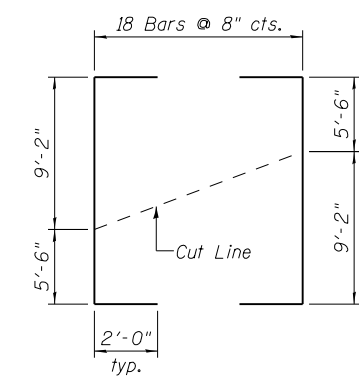
- Bill of Material for West headwall only.
- Bar dimensions are out to out.
- Not to scale or proper orientation.
- Exposed edges shall be beveled 3/4".
- Reinforcement bars shall conform to the requirements of ASTM A706 Gr 60. See Special Provisions.
- Headwall at 0° skew to culvert centerline.
- Bars indicated thus 9x2-#4 etc. indicates 9 lines of bars with 2 lengths per line.
- Minimum bar laps:
#6 bar = 2'-7" #4 bar = 1'-8"



BAR h
(Bend in field)



BARS d & v1



FIELD CUTTING DIAGRAM
BAR v

DESIGNED	KTH
CHECKED	ADL
DRAWN	KTH
CHECKED	ADL

WEST CAST-IN-PLACE END SECTION
S.N. 034-2526

SHEET NO. 2 6 SHEETS	F.A.P. RTE.	SECTION	COUNTY	TOTAL SHEETS	SHEET NO.
	510	120 (B-4, B-5)	HANCOCK	80	43
FED. ROAD DIST. NO.			ILLINOIS	FED. AID PROJECT	
			CONTRACT NO. 72A65		