

STATE OF ILLINOIS
DEPARTMENT OF TRANSPORTATION

GENERAL NOTES

Fasteners shall be AASHTO M164 Type 1, mechanically galvanized bolts in painted areas and M164 Type 3 in unpainted areas. Bolts $\frac{7}{8}$ in. ϕ , holes $\frac{15}{16}$ in. ϕ , unless otherwise noted.

Calculated weight of Structural Steel = 120,610 lbs. (M270, Gr. 50W)

All structural steel shall be AASHTO M 270 Grade 50W. All structural steel shall be cleaned as specified in the Special Provision for "Surface Preparation and Painting Requirements for Weathering Steel".

No field welding is permitted except as specified in the contract documents.

Reinforcement bars shall conform to the requirements of ASTM A 706 Gr 60. See Special Provisions.

Reinforcement bars designated (E) shall be epoxy coated.

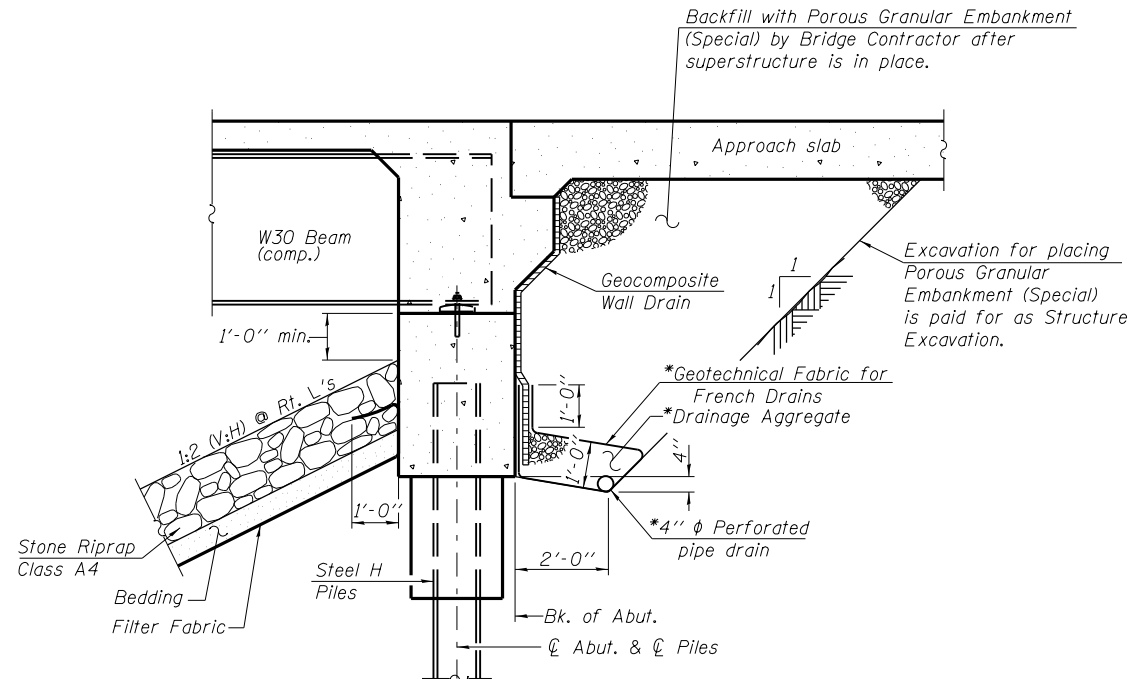
Bearing seat surfaces shall be constructed or adjusted to the designated elevations within a tolerance of $\frac{1}{8}$ inch (0.01 ft.). Adjustment shall be made either by grinding the surface or by shimming the bearings.

Structural steel shall only be painted for a distance equal to the depth of embedment into the concrete cap plus 3 inches. Painted areas shall be primed in the shop with a Department approved zinc rich primer. Field painting will not be required.

Layout of slope protection system may be varied to suit ground conditions in the field as directed by the Engineer.

The Contractor is advised that the existing PPC Deck beams are in a deteriorated condition with reduced load carrying capacity. It is the Contractor's responsibility to account for the condition of the beams when developing construction procedures for removal and replacement of the superstructure.

If the Contractor's procedures for existing deck beam removal involves placement of heavy equipment on the existing deck beams, a detailed procedure shall be submitted to the Engineer for approval. The procedure shall include calculations, sealed by an Illinois Licensed Structural Engineer, verifying the structural adequacy of the beams for the proposed loads. Cost included with Removal of Existing Structures.



SECTION THRU INTEGRAL ABUTMENT

(Horiz. dim. @ Rt. L's)

*Included in the cost of Pipe Underdrains for Structures.

Note:

All drainage system components shall extend to 2'-0" from the end of each wingwall except an outlet pipe shall extend until intersecting with the side slopes. The pipes shall drain into concrete headwalls. (See Article 601.05 of the Standard Specifications and Highway Standard 601101).

TOTAL BILL OF MATERIAL

ITEM	UNIT	SUPER	SUB	TOTAL
Porous Granular Embankment, Special	Cu. Yd.	-	111	111
Stone Riprap, Class A4	Sq. Yd.	-	1,396	1,396
Filter Fabric	Sq. Yd.	-	1,396	1,396
Removal of Existing Structures	Each	1	-	1
Structure Excavation	Cu. Yd.	-	225	225
Floor Drains	Each	20	-	20
Concrete Structures	Cu. Yd.	-	134.9	134.9
Concrete Superstructure	Cu. Yd.	311.0	-	311.0
Bridge Deck Grooving	Sq. Yd.	759	-	759
Concrete Encasement	Cu. Yd.	-	11.2	11.2
Protective Coat	Sq. Yd.	982	-	982
Furnishing and Erecting Structural Steel	L Sum	1	-	1
Stud Shear Connectors	Each	3,240	-	3,240
Reinforcement Bars, Epoxy Coated	Pound	78,460	15,290	93,750
Bar Splicers	Each	826	92	918
Furnishing Steel Piles HP12x63	Foot	-	1,575	1,575
Driving Piles	Foot	-	1,575	1,575
Test Pile Steel HP12x63	Each	-	4	4
Name Plates	Each	1	-	1
Anchor Bolts, 1"	Each	-	48	48
Geocomposite Wall Drain	Sq. Yd.	-	70	70
Pipe Underdrains for Structures 4"	Foot	-	134	134
Mechanical Splicers	Each	-	48	48
Temporary Soil Retention System	Sq. Ft.	-	831	831
Underwater Structure Excavation Protection Location 1	Each	-	1	1
Underwater Structure Excavation Protection Location 2	Each	-	1	1
Asbestos Bearing Pad Removal	Each	-	44	44

STATION 762+24.50
BUILT 20 BY
STATE OF ILLINOIS
F.A.P. RT. 608-SEC. 122B-2
LOADING HL-93
STRUCTURE NO. 059-0512

NAME PLATE
See Std. 515001

**GENERAL NOTES AND DETAILS
STRUCTURE NO. 059-0512**

	SHEET NO. 2	F.A.P. RTE. 608	SECTION 122B-2	COUNTY MACOUPIN	TOTAL SHEETS 53	SHEET NO. 20
	24 SHEETS	CONTRACT NO. 72B53			ILLINOIS FED. AID PROJECT	