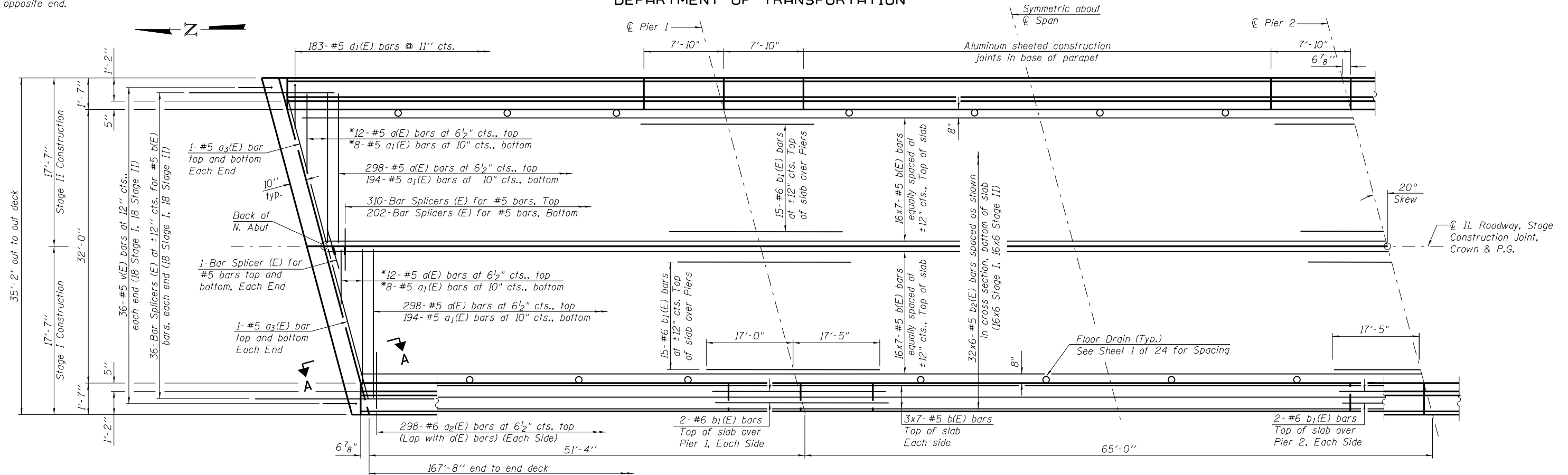


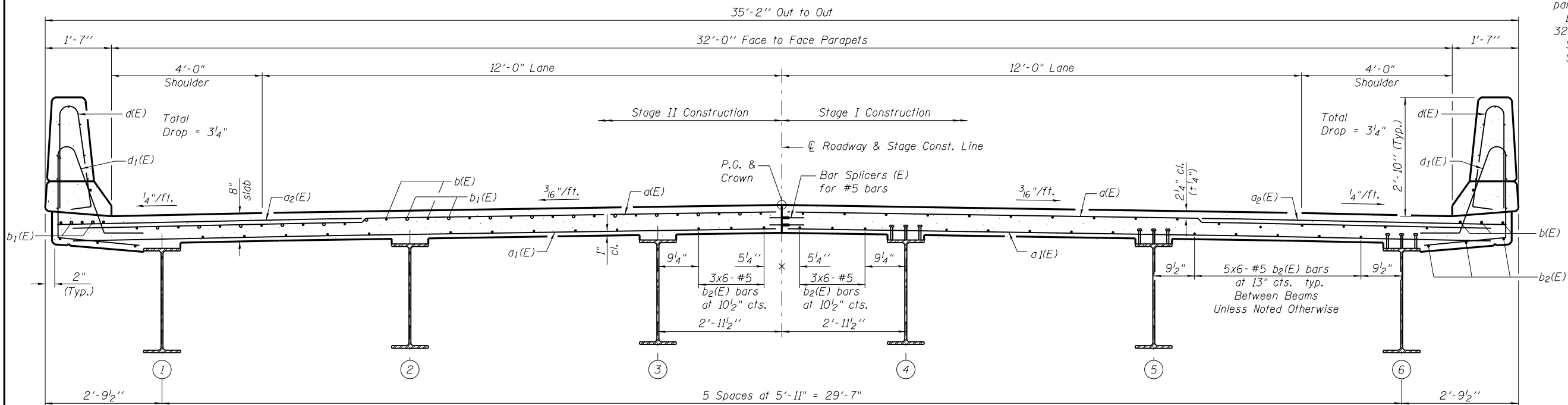
STATE OF ILLINOIS
DEPARTMENT OF TRANSPORTATION

*Order a(E) and a₁(E) bars full length.
Cut to fit skew and use remainder of
bars in opposite end.



PARTIAL PLAN

Notes:
See sheet 9 of 24 for superstructure details, parapet reinforcement and Bill of Material.
Bars indicated thus 32x6- #5 etc. indicates 32 lines of bars with 6 lengths per line.
See Sheet 11 of 24 for Section A-A.
See Sheet 19 of 24 for Bar Splicer Details.



NEAR PIER

NEAR MIDSPAN

CROSS SECTION

(Looking South)
(Floor Drains not shown for clarity)

SUPERSTRUCTURE
STRUCTURE NO. 059-0512

<p>LIN ENGINEERING, LTD. Consulting Engineers Chatham, Illinois</p>	SHEET NO. 8	F.A.P. RTE. 608	SECTION 122B-2	COUNTY MACOUPIN	TOTAL SHEETS 53	SHEET NO. 26
	24 SHEETS	CONTRACT NO. 72B53				
ILLINOIS FED. AID PROJECT						