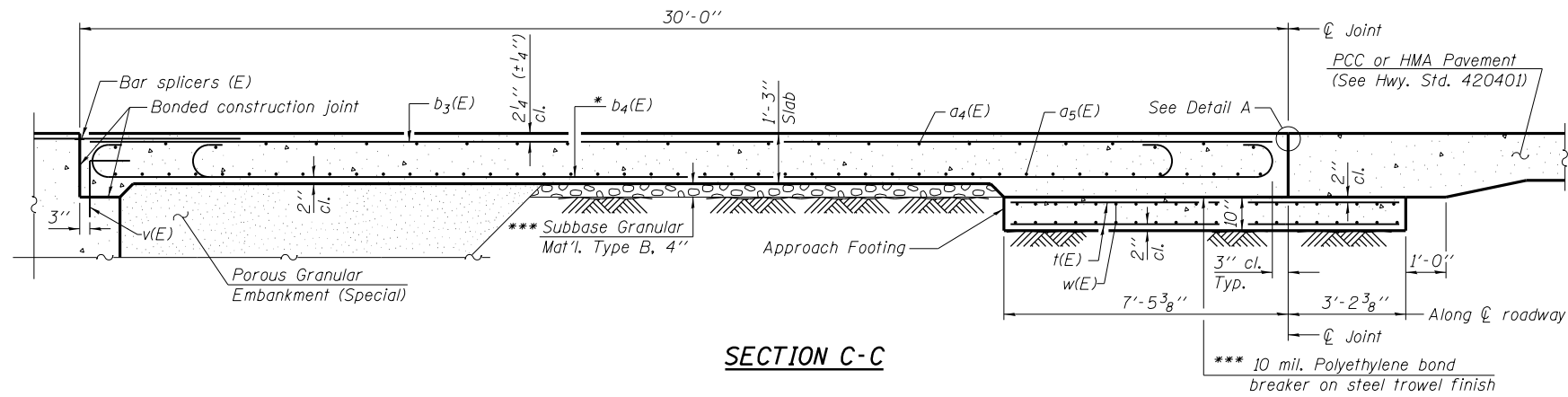


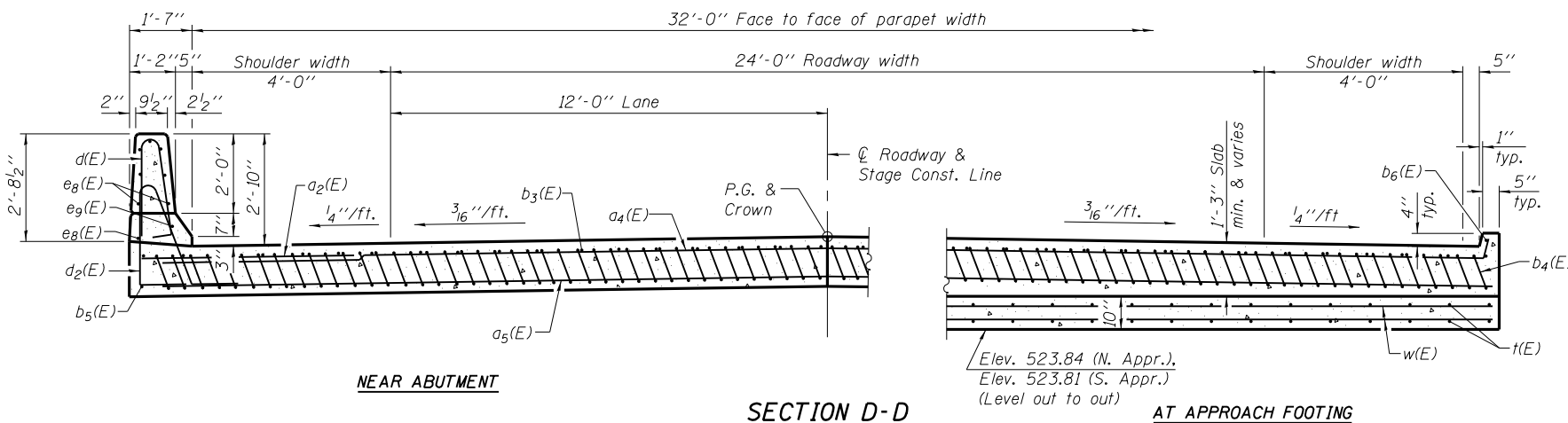
STATE OF ILLINOIS  
DEPARTMENT OF TRANSPORTATION

Notes:

See sheet 12 of 24 for Detail A and View B-B.  
Approach slab and parapet concrete shall be paid for as Concrete Superstructure.  
Approach footing concrete shall be paid for as Concrete Structures.  
Reinforcement shall be paid for as Reinforcement Bars, Epoxy Coated.  
For v(E) bar details, see sheet 9 of 24.  
For bar splicer details, see sheet 19 of 24.  
Cost of excavation for approach footing included with Concrete Structures.  
For Porous Granular Embankment (Special) and drainage treatment details, see sheet 2 of 24.  
For additional parapet details, see sheet 9 of 24.



SECTION C-C

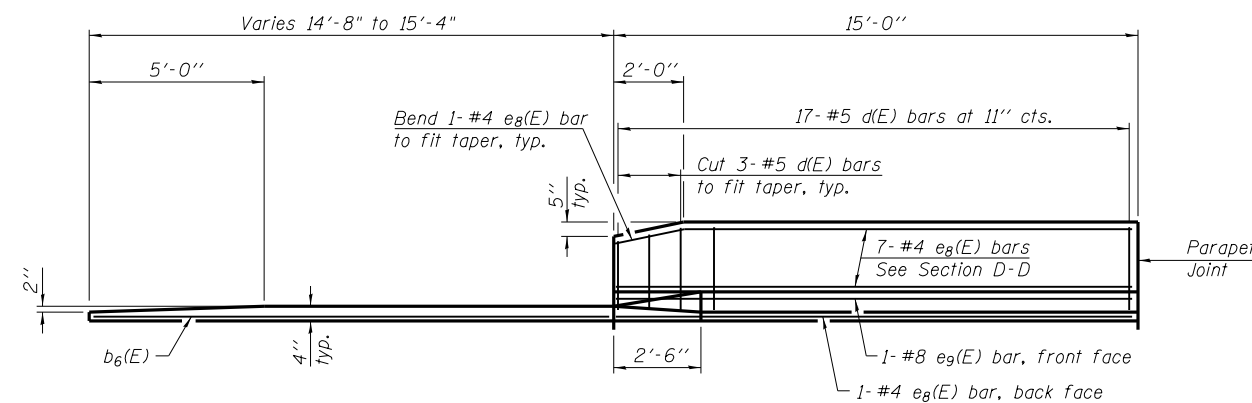


NEAR ABUTMENT

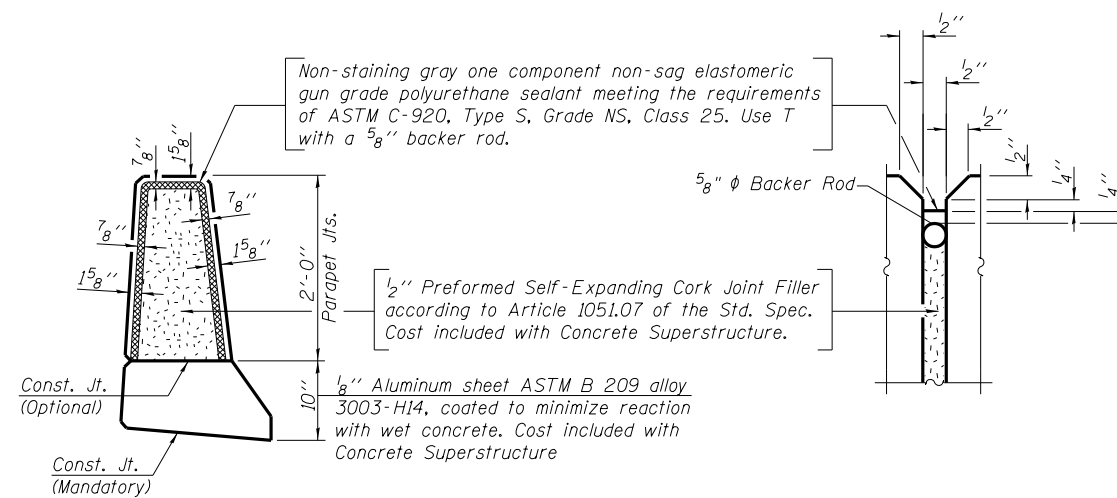
SECTION D-D

(See Plan for dimensions not shown)

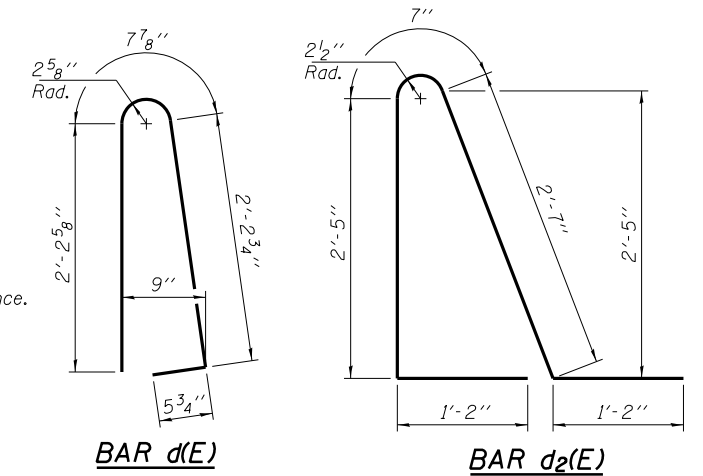
AT APPROACH FOOTING



VIEW E-E



PARAPET JOINT DETAILS

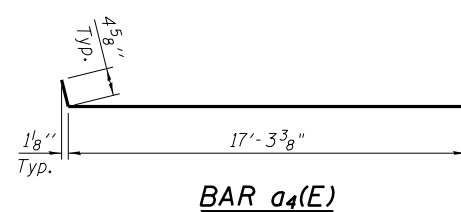


BAR d(E)

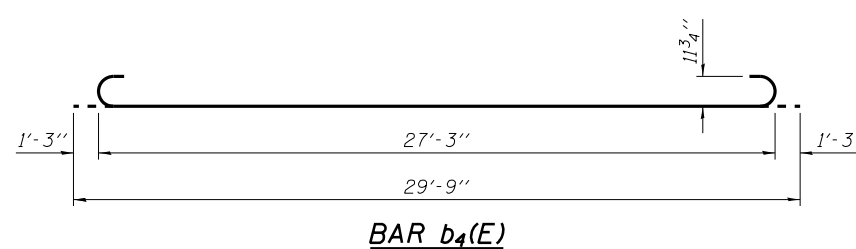
BAR d2(E)

TWO APPROACHES  
BILL OF MATERIAL

Bar	No.	Size	Length	Shape
a2(E)	48	#6	6'-6"	—
a4(E)	100	#4	17'-8"	—
a5(E)	184	#5	17'-8"	—
b3(E)	56	#4	29'-8"	—
b4(E)	160	#9	29'-9"	—
b5(E)	4	#4	14'-8"	—
b6(E)	4	#4	14'-5"	—
d(E)	68	#5	5'-7"	⤴
d2(E)	68	#5	7'-11"	⤴
e8(E)	32	#4	14'-8"	—
e9(E)	4	#8	14'-8"	—
t(E)	136	#4	10'-3"	—
w(E)	160	#5	17'-8"	—
Concrete Superstructure		Cu. Yd.	105.2	
Concrete Structures		Cu. Yd.	11.1	
Reinforcement Bars, Epoxy Coated		Pound	27,720	



BAR a4(E)



BAR b4(E)

BRIDGE APPROACH SLAB DETAILS-2  
STRUCTURE NO. 059-0512

<p>LIN ENGINEERING, LTD. Consulting Engineers Chatham, Illinois</p>	SHEET NO. 13	F.A.P. RTE. 608	SECTION 122B-2	COUNTY MACOUPIN	TOTAL SHEETS 53	SHEET NO. 31
	24 SHEETS	CONTRACT NO. 72B53			ILLINOIS FED. AID PROJECT	