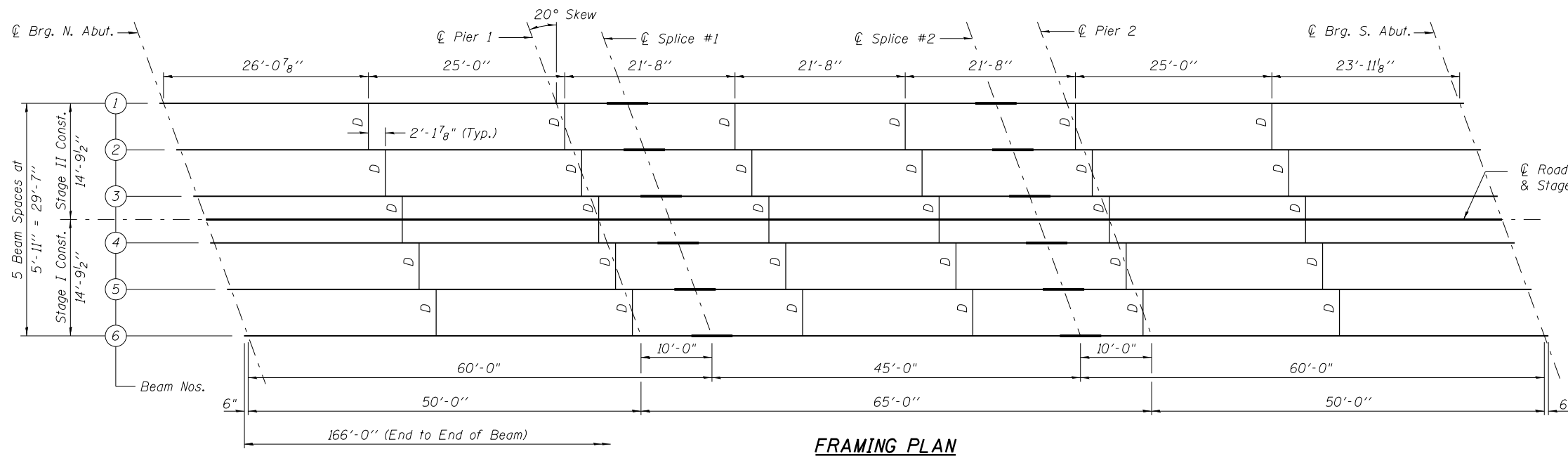
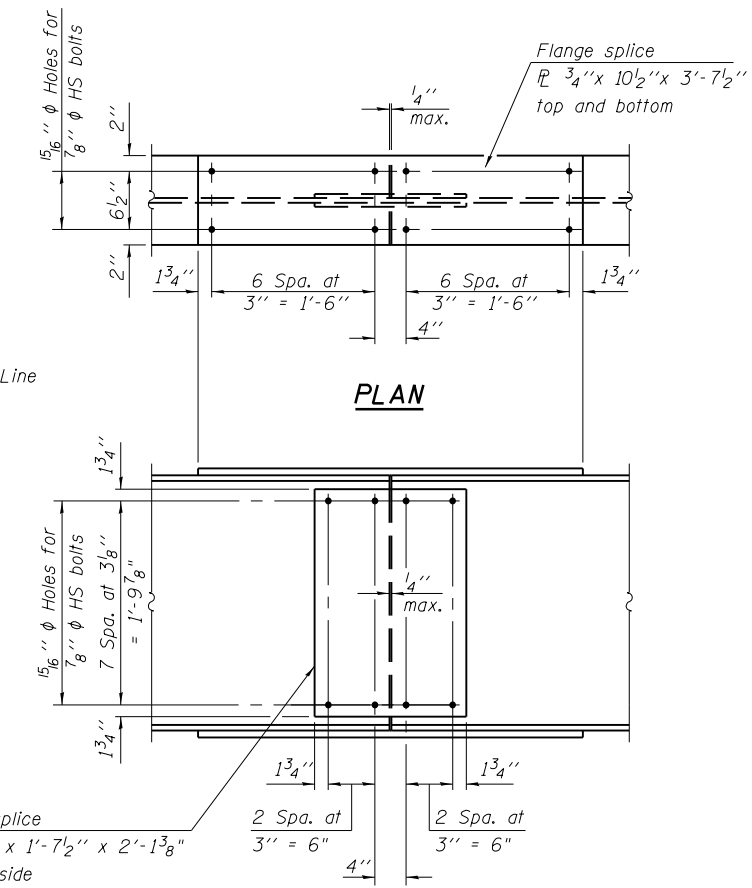


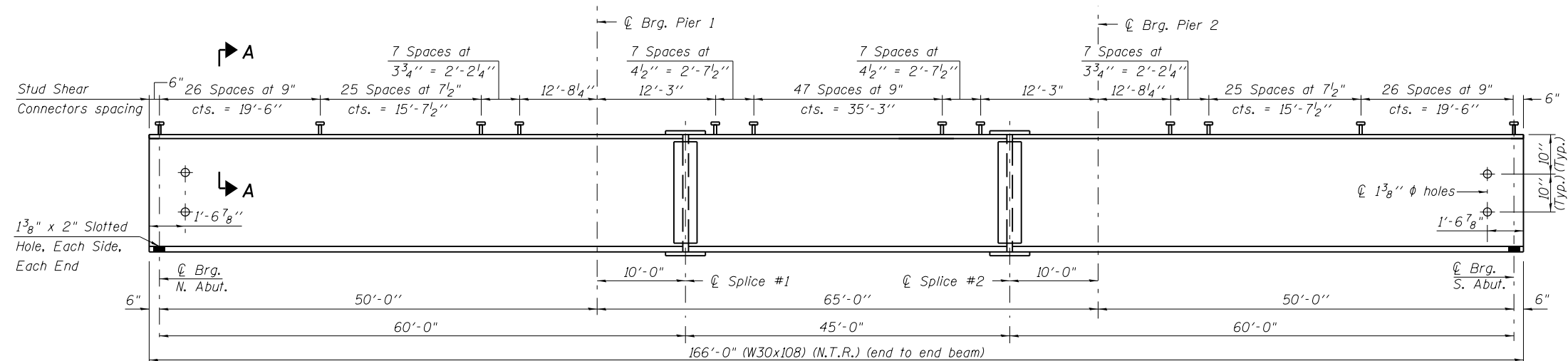
STATE OF ILLINOIS
DEPARTMENT OF TRANSPORTATION



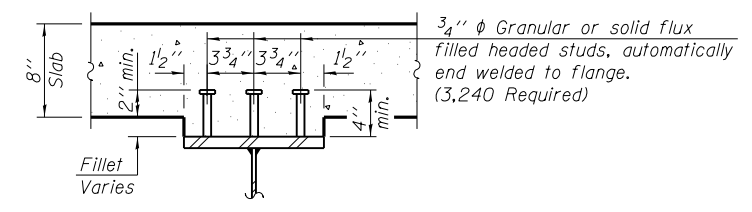
FRAMING PLAN



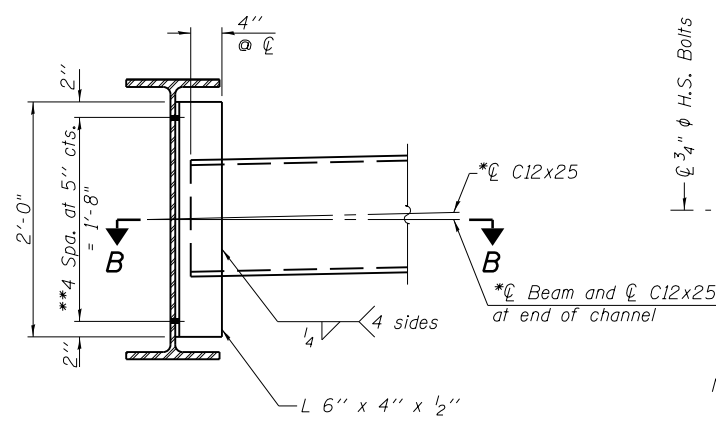
**ELEVATION
SPLICE DETAIL**
(12 Required)



BEAM ELEVATION



SECTION A-A



DIAPHRAGM D
(30 Required)

TOP OF BEAM ELEVATIONS
(For Fabrication Only)

Location	Beam 1	Beam 2	Beam 3	Beam 4	Beam 5	Beam 6
⊕ Brg. N. Abut.	525.25	525.35	525.45	525.45	525.35	525.25
⊕ Brg. Pier 1	525.18	525.29	525.38	525.38	525.29	525.18
⊕ Splice 1	525.17	525.28	525.37	525.37	525.28	525.17
⊕ Splice 2	525.17	525.28	525.37	525.37	525.28	525.17
⊕ Brg. Pier 2	525.18	525.29	525.38	525.38	525.29	525.18
⊕ Brg. S. Abut.	525.23	525.34	525.43	525.43	525.34	525.23

Notes:
Two hardened washers required for each set of oversized holes.
*C12x30 is permitted to facilitate material acquisition. Calculated weight of structural steel is based on C12x25. The alternate, if utilized, shall be provided at no additional cost to the Department.
**3/4" ϕ HS bolts, 1⁵/₁₆" ϕ holes. Diaphragms at stage construction line shall be finger tightened prior to the deck slab pouring and then fully tightened after completion of the pour.

NOTES:

- All splice plates shall be AASHTO M270 Grade 50W (NTR).
- Load carrying components designated "NTR" shall conform to the Supplemental Requirements for Notch Toughness, Zone 2.
- All diaphragms shall be installed as steel is erected and secured with erection pins and bolts except as otherwise noted. Individual diaphragms at supports may be temporarily disconnected to install bearing anchor rods.

FRAMING PLAN & STEEL DETAILS
STRUCTURE NO. 059-0512

 LIN ENGINEERING, LTD. Consulting Engineers Chatham, Illinois	SHEET NO. 14	F.A.P. RTE. 608	SECTION 122B-2	COUNTY MACOUPIN	TOTAL SHEETS 53	SHEET NO. 32
	24 SHEETS	CONTRACT NO. 72B53				
ILLINOIS FED. AID PROJECT						