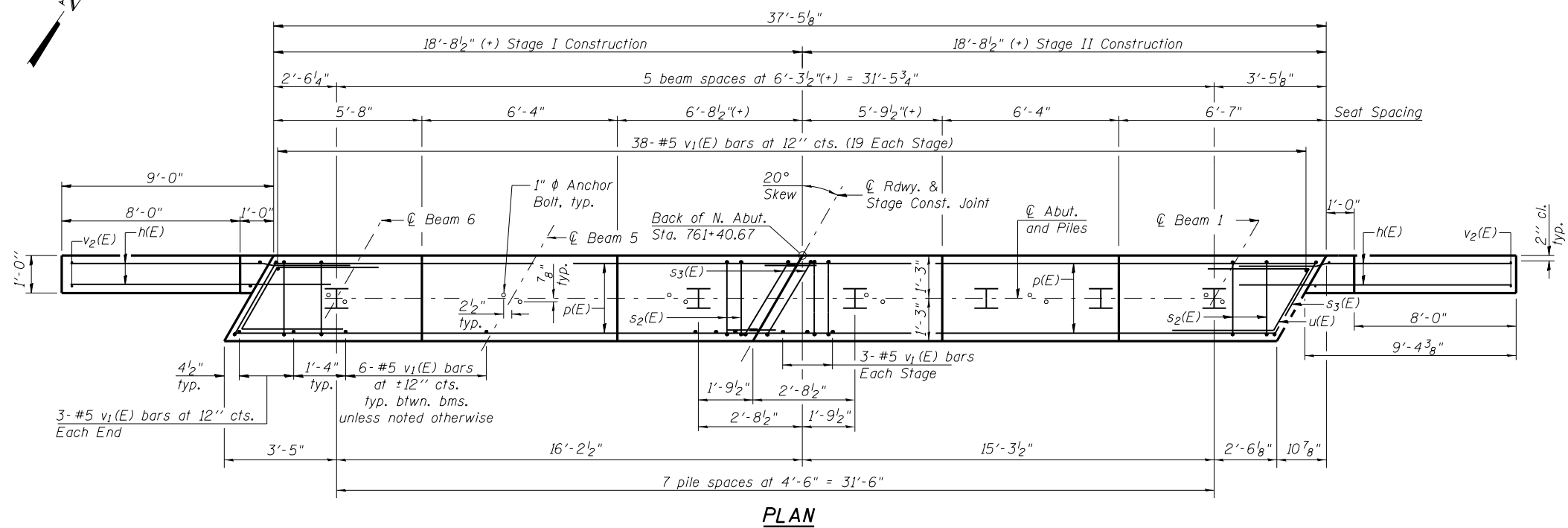
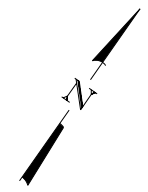
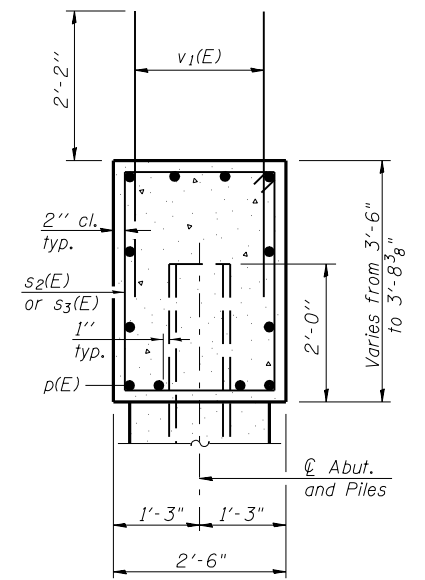
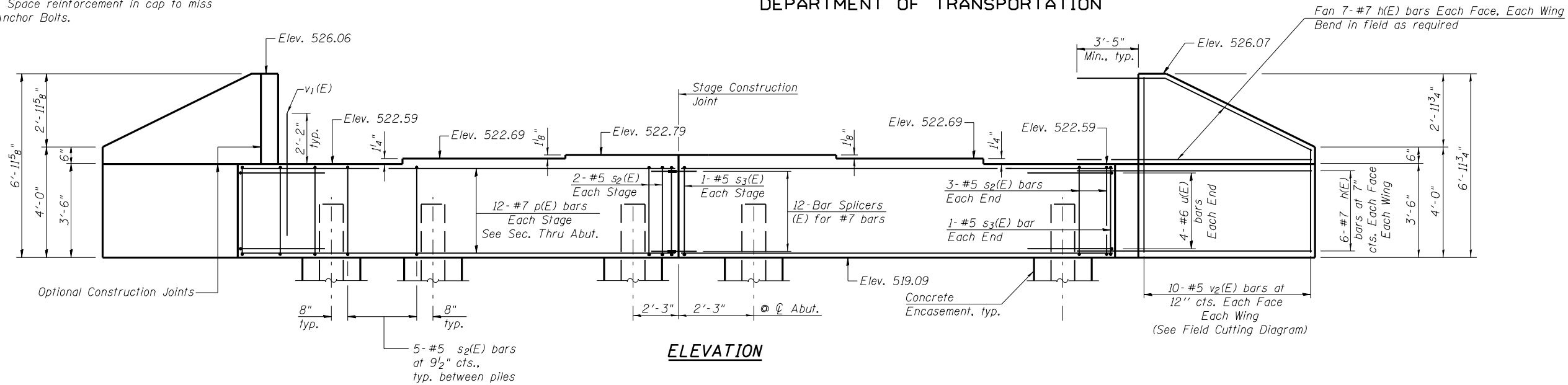


STATE OF ILLINOIS
DEPARTMENT OF TRANSPORTATION

Notes:
Pour steps monolithically with cap.
Space reinforcement in cap to miss
Anchor Bolts.

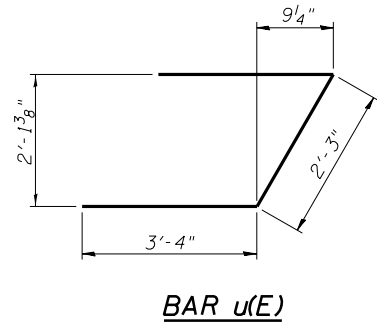
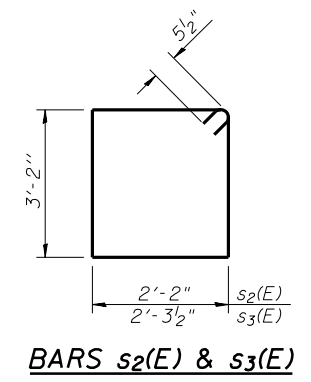
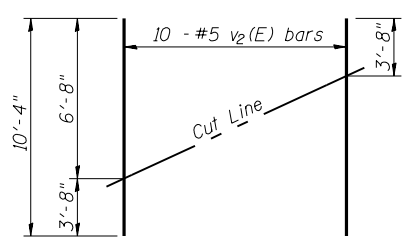


BILL OF MATERIAL

(North Abutment)

Bar	No.	Size	Length	Shape
h(E)	52	#7	13'-4"	—
p(E)	24	#7	18'-4"	—
s ₂ (E)	40	#5	11'-7"	□
s ₃ (E)	4	#5	11'-10"	□
u(E)	8	#6	8'-11"	└
v ₁ (E)	74	#5	4'-4"	—
v ₂ (E)	20	#5	10'-4"	—
Structure Excavation			Cu. Yd.	95
Concrete Structures			Cu. Yd.	16.3
Reinforcement Bars, Epoxy Coated			Pound	3510
Furnishing Steel Piles HP12x63			Foot	406
Test Pile Steel HP 12x63			Each	1
Driving Piles			Foot	406
Concrete Encasement			Cu. Yd.	2.8

For details of Bar Splicers, see sheet 19 of 24.
For details of piles and Concrete Encasement, see sheet 20 of 24.
For drainage details, see sheet 2 of 24.



PILE DATA

Type: Steel HP12x63
Nominal Required Bearing: 497 kips
Factored Resistance Available: 248 kips
Est. Length: 58 ft
No. Production Piles: 7
No. Test Piles: 1

**NORTH ABUTMENT
STRUCTURE NO. 059-0512**

<p>LIN ENGINEERING, LTD. Consulting Engineers Chatham, Illinois</p>	SHEET NO. 16	F.A.P. RTE. 608	SECTION 122B-2	COUNTY MACOUPIN	TOTAL SHEETS 53	SHEET NO. 34
	24 SHEETS	CONTRACT NO. 72B53				
ILLINOIS FED. AID PROJECT						