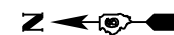


**STAGE II SEQUENCE OF CONSTRUCTION**

1. REMOVE ALL CONFLICTING PAVEMENT MARKINGS AND RELOCATE TEMPORARY CONCRETE BARRIER AND ATTENUATORS AND PUT IN PLACE OTHER TRAFFIC CONTROL MEASURES FOR STAGE II CONSTRUCTION AS REQUIRED USING TRAFFIC CONTROL & PROTECTION STANDARD 701321.
2. COMPLETE ALL STAGE II CONSTRUCTION WORK-PAVEMENT, GUARDRAIL, SHOULDERS, DRAINAGE ITEMS, BRIDGE APPROACH PAVEMENTS, AND STAGE II STRUCTURAL WORK SHOWN ON THE PLANS.
3. CONSTRUCT HMA BINDER COURSE AND SUBBASE GRANULAR MATERIAL FOR TEMPORARY PROFILE.

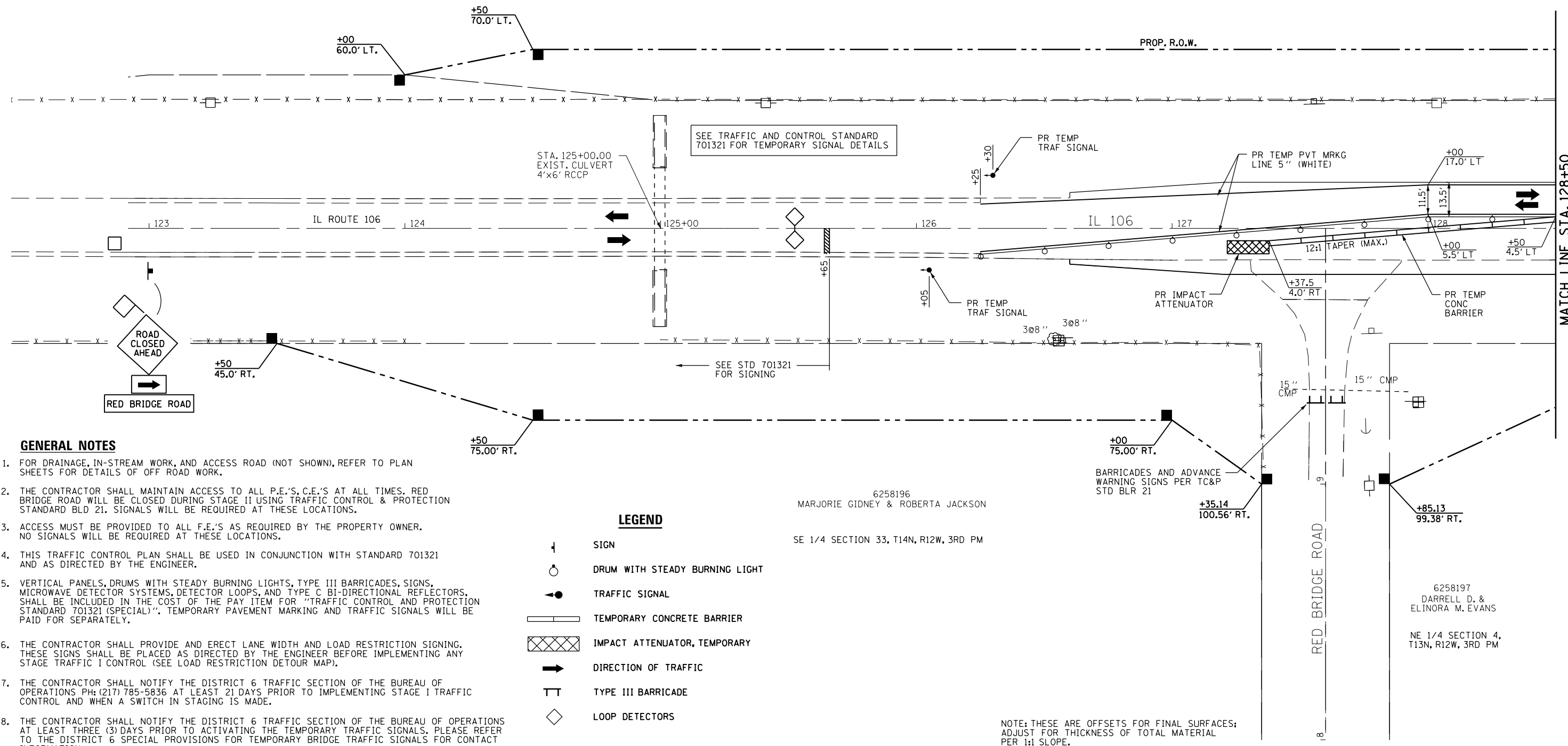
**STAGE III SEQUENCE OF CONSTRUCTION**

1. FOLLOWING STAGE II CONSTRUCTION, COMPLETE BRIDGE APPROACH SHOULDERS, INLETS, HMA SHOULDERS, GUARDRAIL, ENTRANCES, AND HMA BINDER, LEVELING BINDER, AND SURFACE COURSES UP TO FINAL GRADE. PLACE FINAL STRIPING.



SW 1/4 SECTION 34, T14N, R12W, 3RD PM

6258196  
MARJORIE GIDNEY & ROBERTA JACKSON



**GENERAL NOTES**

1. FOR DRAINAGE, IN-STREAM WORK, AND ACCESS ROAD (NOT SHOWN), REFER TO PLAN SHEETS FOR DETAILS OF OFF ROAD WORK.
2. THE CONTRACTOR SHALL MAINTAIN ACCESS TO ALL P.E.'S, C.E.'S AT ALL TIMES. RED BRIDGE ROAD WILL BE CLOSED DURING STAGE II USING TRAFFIC CONTROL & PROTECTION STANDARD BLD 21. SIGNALS WILL BE REQUIRED AT THESE LOCATIONS.
3. ACCESS MUST BE PROVIDED TO ALL F.E.'S AS REQUIRED BY THE PROPERTY OWNER. NO SIGNALS WILL BE REQUIRED AT THESE LOCATIONS.
4. THIS TRAFFIC CONTROL PLAN SHALL BE USED IN CONJUNCTION WITH STANDARD 701321 AND AS DIRECTED BY THE ENGINEER.
5. VERTICAL PANELS, DRUMS WITH STEADY BURNING LIGHTS, TYPE III BARRICADES, SIGNS, MICROWAVE DETECTOR SYSTEMS, DETECTOR LOOPS, AND TYPE C BI-DIRECTIONAL REFLECTORS, SHALL BE INCLUDED IN THE COST OF THE PAY ITEM FOR "TRAFFIC CONTROL AND PROTECTION STANDARD 701321 (SPECIAL)". TEMPORARY PAVEMENT MARKING AND TRAFFIC SIGNALS WILL BE PAID FOR SEPARATELY.
6. THE CONTRACTOR SHALL PROVIDE AND ERECT LANE WIDTH AND LOAD RESTRICTION SIGNING. THESE SIGNS SHALL BE PLACED AS DIRECTED BY THE ENGINEER BEFORE IMPLEMENTING ANY STAGE TRAFFIC I CONTROL (SEE LOAD RESTRICTION DETOUR MAP).
7. THE CONTRACTOR SHALL NOTIFY THE DISTRICT 6 TRAFFIC SECTION OF THE BUREAU OF OPERATIONS PH: (217) 785-5836 AT LEAST 21 DAYS PRIOR TO IMPLEMENTING STAGE I TRAFFIC CONTROL AND WHEN A SWITCH IN STAGING IS MADE.
8. THE CONTRACTOR SHALL NOTIFY THE DISTRICT 6 TRAFFIC SECTION OF THE BUREAU OF OPERATIONS AT LEAST THREE (3) DAYS PRIOR TO ACTIVATING THE TEMPORARY TRAFFIC SIGNALS. PLEASE REFER TO THE DISTRICT 6 SPECIAL PROVISIONS FOR TEMPORARY BRIDGE TRAFFIC SIGNALS FOR CONTACT INFORMATION.

**LEGEND**

- ↑ SIGN
- DRUM WITH STEADY BURNING LIGHT
- TRAFFIC SIGNAL
- ▬ TEMPORARY CONCRETE BARRIER
- ▨ IMPACT ATTENUATOR, TEMPORARY
- ➔ DIRECTION OF TRAFFIC
- TT TYPE III BARRICADE
- ◇ LOOP DETECTORS

6258196  
MARJORIE GIDNEY & ROBERTA JACKSON

SE 1/4 SECTION 33, T14N, R12W, 3RD PM

BARRICADES AND ADVANCE  
WARNING SIGNS PER TC&P  
STD BLR 21

NOTE: THESE ARE OFFSETS FOR FINAL SURFACES;  
ADJUST FOR THICKNESS OF TOTAL MATERIAL  
PER 1:1 SLOPE.

FILE NAME =	USER NAME = laughlinc1	DESIGNED - E.R.O.	REVISED -	<b>STATE OF ILLINOIS DEPARTMENT OF TRANSPORTATION</b>	<b>MOT PLAN (STAGE II) STA. 124 + 70 TO STA. 128 + 50</b>	F.A.P. RTE.	SECTION	COUNTY	TOTAL SHEETS	SHEET NO.
et:\pw\work\p1dot\laughlinc1\1d0238533\0672891-sh1-mot07.dgn	DRAWN - R.A.W.	REVISED -	566			14B-2)	SCOTT	77	19	
PLOT SCALE = 40.0000' / in.	CHECKED - J.S.A.	REVISED -	CONTRACT NO. 72B91							
PLOT DATE = Aug-26-2010 11:17:57AM	DATE -	REVISED -	FED. ROAD DIST. NO. 6 ILLINOIS FED. AID PROJECT							