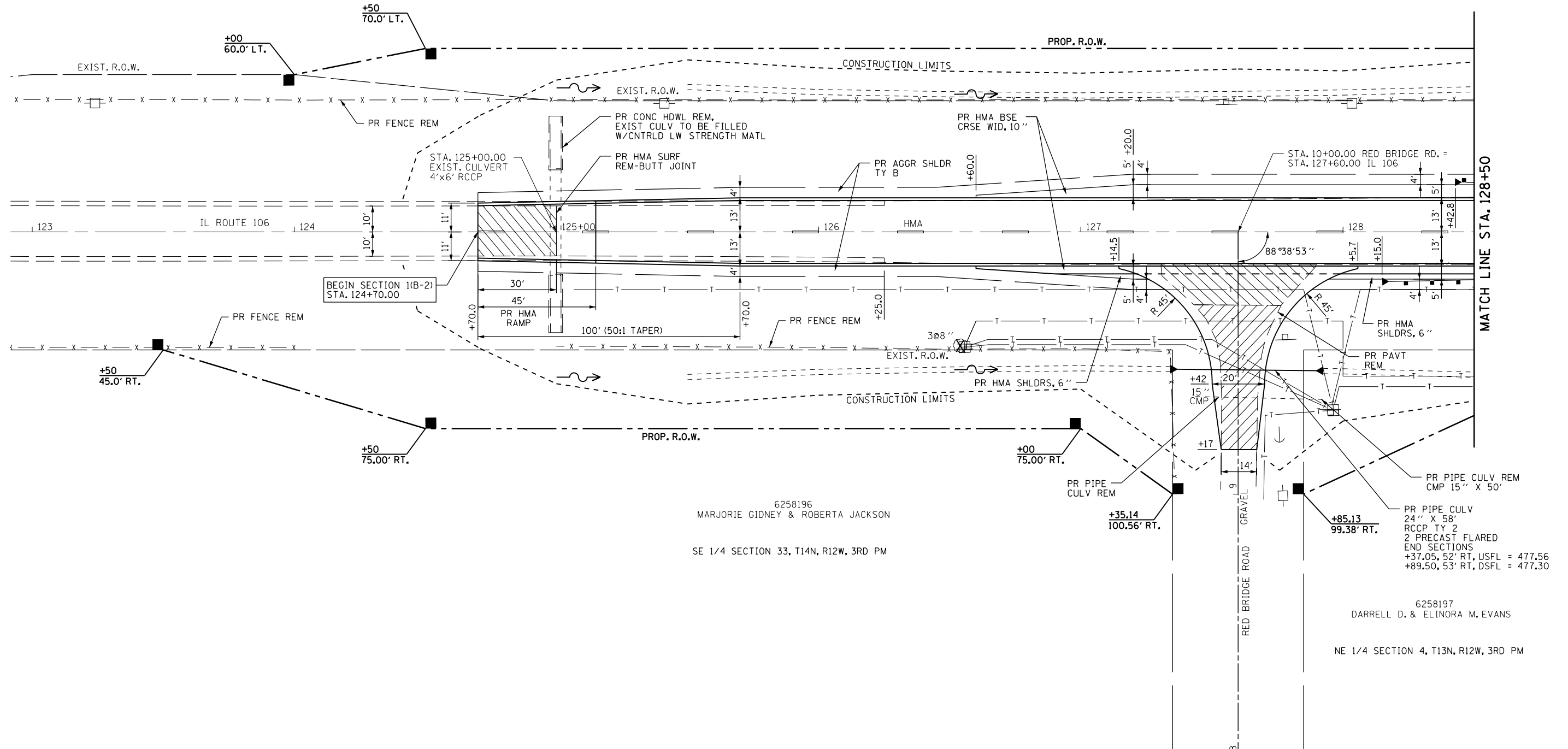




SW 1/4 SECTION 34, T14N, R12W, 3RD PM

6258196
MARJORIE GIDNEY & ROBERTA JACKSON



6258196
MARJORIE GIDNEY & ROBERTA JACKSON

SE 1/4 SECTION 33, T14N, R12W, 3RD PM

6258197
DARRELL D. & ELINORA M. EVANS
NE 1/4 SECTION 4, T13N, R12W, 3RD PM

FILE NAME =	USER NAME = laughlinc1	DESIGNED - E.R.O.	REVISED -
et:\pwork\pwork\laughlinc1\0238533\0672891-sh.t-PLN01.dgn		DRAWN - R.A.W.	REVISED -
	PLOT SCALE = 40.0000' / in.	CHECKED - J.S.A.	REVISED -
	PLOT DATE = Aug-26-2010 11:18:12AM	DATE -	REVISED -

**STATE OF ILLINOIS
DEPARTMENT OF TRANSPORTATION**

PLAN SHEET			
STA. 124 + 70 TO STA. 128 + 50			
SCALE:	SHEET NO. OF	SHEETS	STA. TO STA.

F.A.P. RTE.	SECTION	COUNTY	TOTAL SHEETS	SHEET NO.
566	1(B-2)	SCOTT	77	22
CONTRACT NO. 72B91				
FED. ROAD DIST. NO. 6 ILLINOIS FED. AID PROJECT				