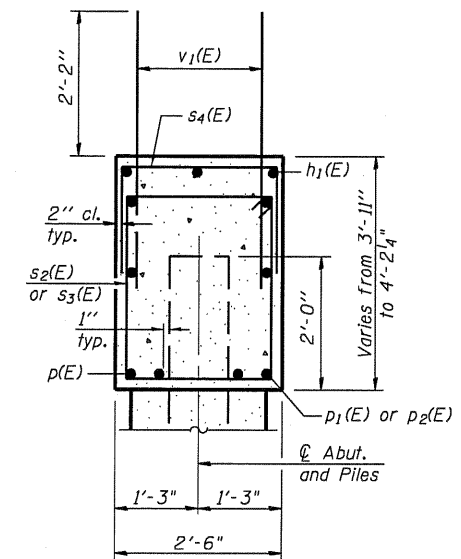
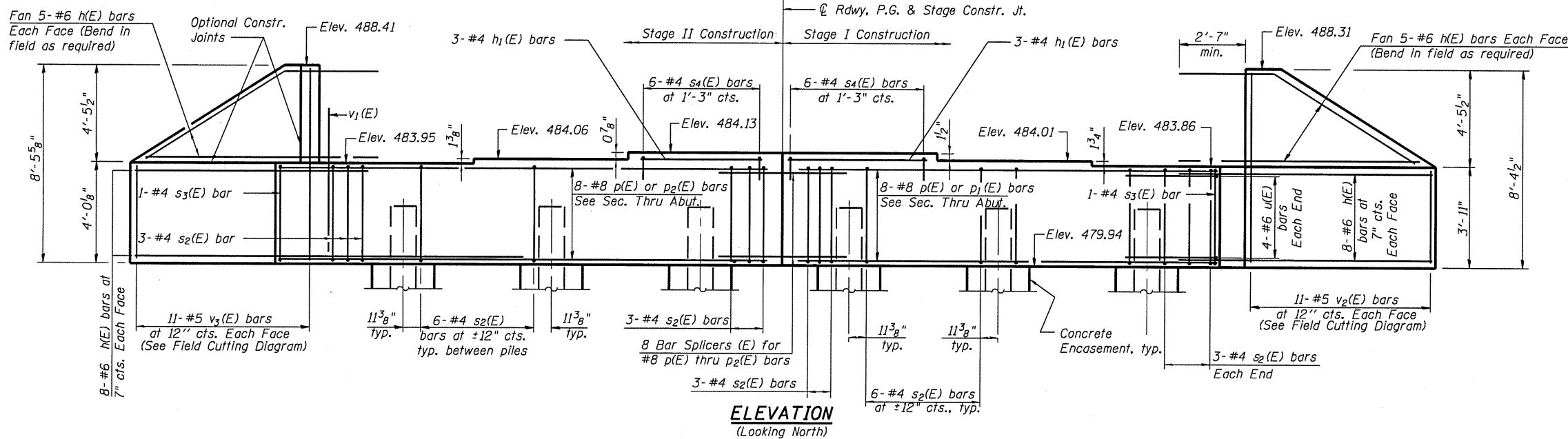


STATE OF ILLINOIS
DEPARTMENT OF TRANSPORTATION

Notes:
Pour steps monolithically with cap.



SEC. THRU ABUT.

BILL OF MATERIAL

Bar	No.	Size	Length	Shape
h(E)	52	#6	13'-5"	—
h1(E)	6	#4	6'-5"	—
p(E)	16	#8	20'-0"	—
p1(E)	8	#8	19'-3"	—
p2(E)	8	#8	20'-7"	—
s2(E)	36	#4	12'-3"	□
s3(E)	2	#4	12'-5"	□
s4(E)	12	#4	6'-6"	□
u(E)	8	#6	9'-5"	└
v1(E)	77	#5	4'-4"	—
v2(E)	11	#5	11'-9"	—
v3(E)	11	#5	11'-11"	—
Structure Excavation			Cu. Yd.	153
Concrete Structures			Cu. Yd.	20.0
Reinforcement Bars, Epoxy Coated			Pound	3840
Furnishing - Piles, HP 12x53			Foot	265
Driving Piles			Foot	265
Test Pile, HP 12x53			Each	1
Concrete Encasement			Cu. Yd.	2.1

For details of Bar Splicers, see sheet 24 of 26.
For details of piles and Concrete Encasement, see sheet 23 of 26.

NORTH ABUTMENT
STRUCTURE NO. 086-0505

PILE DATA

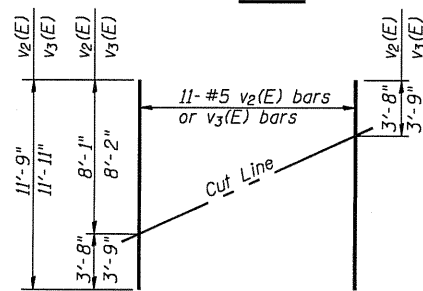
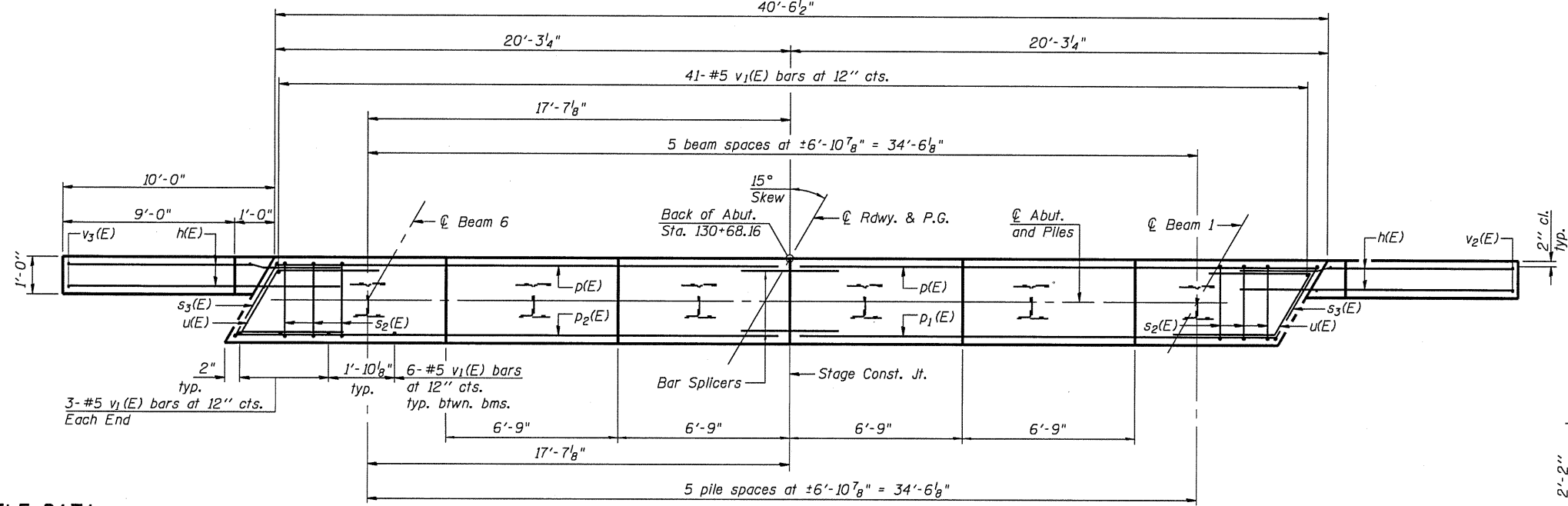
Type: HP 12x53
Nominal Required Bearing: 419 kips
Factored Resistance Available: 202 kips
Est. Length: 53 ft.
No. Production Piles: 5 piles
No. Test Piles: 1 pile

Piles shall be driven through 18" diameter precored holes extending to elevation 475' according to Article 512.09(c) of the Standard Specifications. Cost included in driving piles.

DESIGNED	C.M.W.
CHECKED	J.S.A.
DRAWN	T.J.W.
CHECKED	C.M.W.

HOELSCHER ENGINEERING
Fairview Heights, IL
Springfield, IL
Champaign, IL

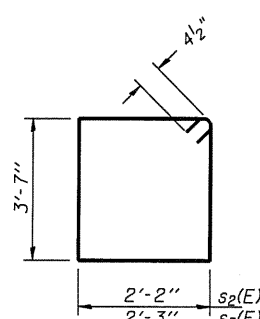
PLAN



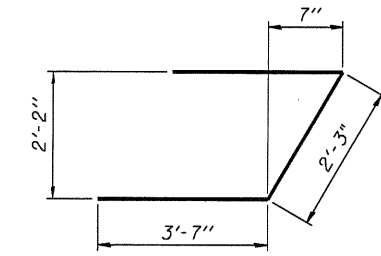
FIELD CUTTING DIAGRAM

Order v2(E) & v4(E) full length. Cut as shown and use remainder of bars in opposite face.

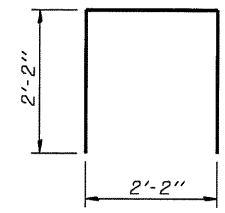
BARS s2(E) & s3(E)



BAR u(E)



BAR s4(E)



SHEET NO. 18 of 26 SHEETS	F.A.P. RTE.	SECTION	COUNTY	TOTAL SHEETS	SHEET NO.
	566	1(B-2)	SCOTT	77	45
FED. ROAD DIST. NO.		ILLINOIS	FED. AID PROJECT		
CONTRACT NO. 72B91					