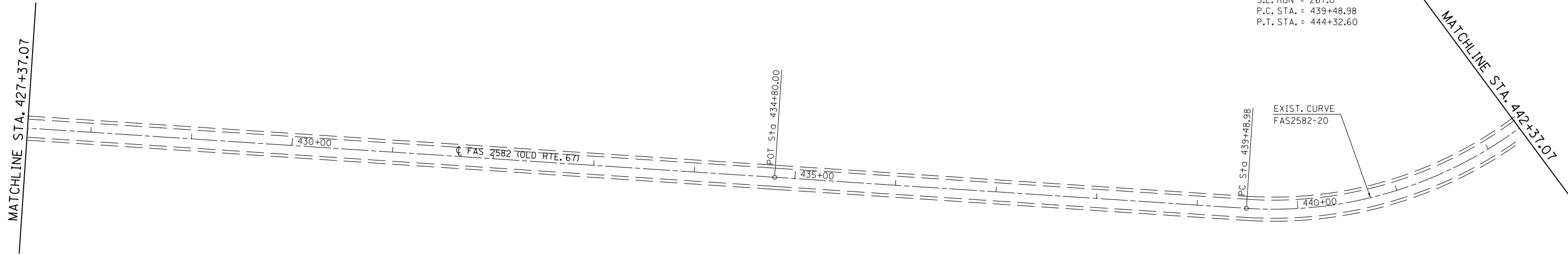
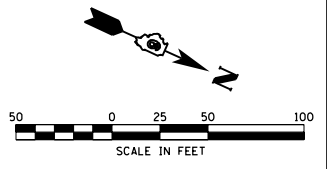
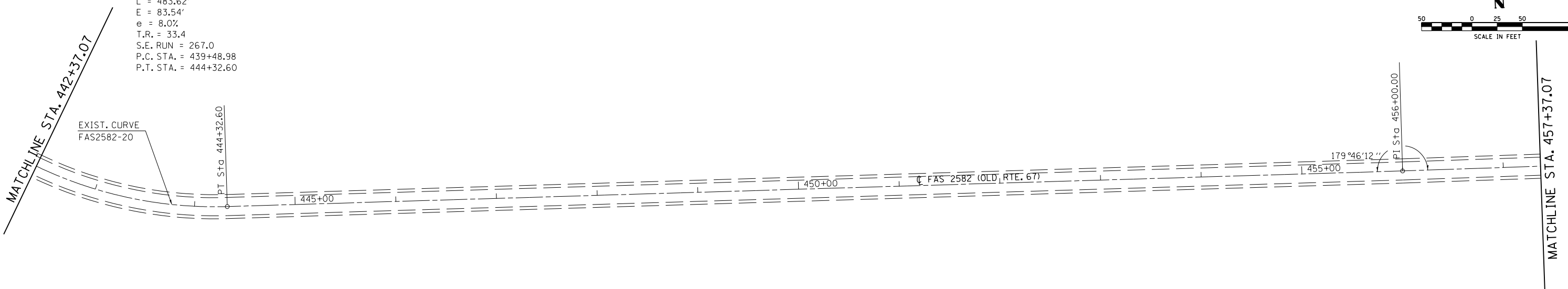
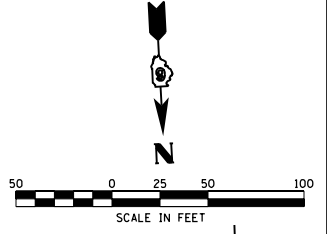


EXIST. CURVE FAS2582-20  
 PI STA. = 442+23.50  
 $\Delta = 67^\circ 42' 00''$  (LT)  
 $D = 13^\circ 59' 55''$   
 $R = 409.30'$   
 $T = 274.52'$   
 $L = 483.62'$   
 $E = 83.54'$   
 $e = 8.0\%$   
 $T.R. = 33.4$   
 $S.E. RUN = 267.0$   
 $P.C. STA. = 439+48.98$   
 $P.T. STA. = 444+32.60$



EXIST. CURVE FAS2582-20  
 PI STA. = 442+23.50  
 $\Delta = 67^\circ 42' 00''$  (LT)  
 $D = 13^\circ 59' 55''$   
 $R = 409.30'$   
 $T = 274.52'$   
 $L = 483.62'$   
 $E = 83.54'$   
 $e = 8.0\%$   
 $T.R. = 33.4$   
 $S.E. RUN = 267.0$   
 $P.C. STA. = 439+48.98$   
 $P.T. STA. = 444+32.60$



FILE NAME =	USER NAME = laughl1n1	DESIGNED -	REVISED -
c:\pwwork\pwwork\laughl1n1\0221840\062063-SHT-plan1.dgn		DRAWN -	REVISED -
	PLOT SCALE = 100.0000' / in.	CHECKED -	REVISED -
	PLOT DATE = 8/9/2010	DATE -	REVISED -

**STATE OF ILLINOIS  
 DEPARTMENT OF TRANSPORTATION**

**PLAN SHEET - FAS 2582 (OLD RTE. 67)**

SCALE:      SHEET NO. 9 OF 17 SHEETS      STA.      TO STA.

F.A.S. RTE.	SECTION	COUNTY	TOTAL SHEETS	SHEET NO.
2582	(44,46)I & (45)I-1	SCHUYLER	25	17
CONTRACT NO. 72D63			ILLINOIS FED. AID PROJECT	