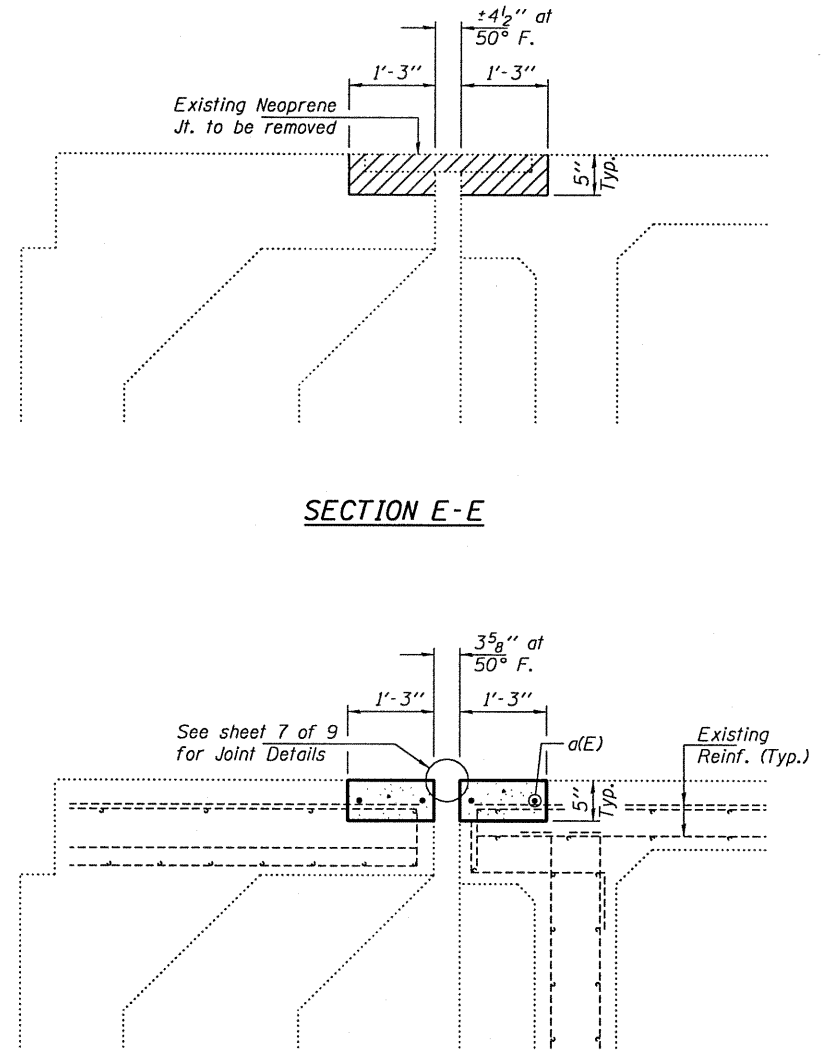


REMOVAL PLAN AT WEST ABUTMENT

REPLACEMENT PLAN AT WEST ABUTMENT

Notes:
 Hatched areas indicate concrete sections to be removed and replaced.
 Perimeters of concrete removal areas shall be saw cut 3/4" prior to the removal of concrete.
 Extreme care shall be exercised in the removal of concrete due to the shallow slab depth from the web of the box girder out to the parapet.
 See sheet 4 of 9 for Parapet Details & d1(E) bars.



SECTION E-E

SECTION F-F

**WEST ABUTMENT
 BILL OF MATERIAL**

| Bar | No. | Size | Length | Shape |
|----------------------------------|-----|------|---------|-------|
| a(E) | 8 | #5 | 20'-2" | — |
| d(E) | 8 | #4 | 2'-9" | — |
| d1(E) | 8 | #5 | 6'-1" | ⊔ |
| Concrete Removal | | | Cu. Yd. | 1.4 |
| Concrete Superstructure | | | Cu. Yd. | 1.4 |
| Reinforcement Bars, Epoxy Coated | | | Pound | 260 |

DESIGNED - MKC
 CHECKED - GGE
 DRAWN - Kyle M. Steffen
 CHECKED - MKC GGE

EXAMINED *Carl Perry*
 ENGINEER OF STRUCTURAL SERVICES
 PASSED *Ralph E. Anderson*
 ENGINEER OF BRIDGES AND STRUCTURES

DATE - SEPTEMBER 27, 2010

**STATE OF ILLINOIS
 DEPARTMENT OF TRANSPORTATION**

**JOINT REMOVAL & REPLACEMENT DETAILS AT WEST ABUTMENT
 SN 075-0122 (E.B.)**

SHEET NO. 5 OF 9 SHEETS

| F.A.I. RTE. | SECTION | COUNTY | TOTAL SHEETS | SHEET NO. |
|--------------------|------------|--------|---------------------------|-----------|
| 72 | (75, 86)JR | PIKE | 13 | 9 |
| CONTRACT NO. 72081 | | | ILLINOIS FED. AID PROJECT | |