

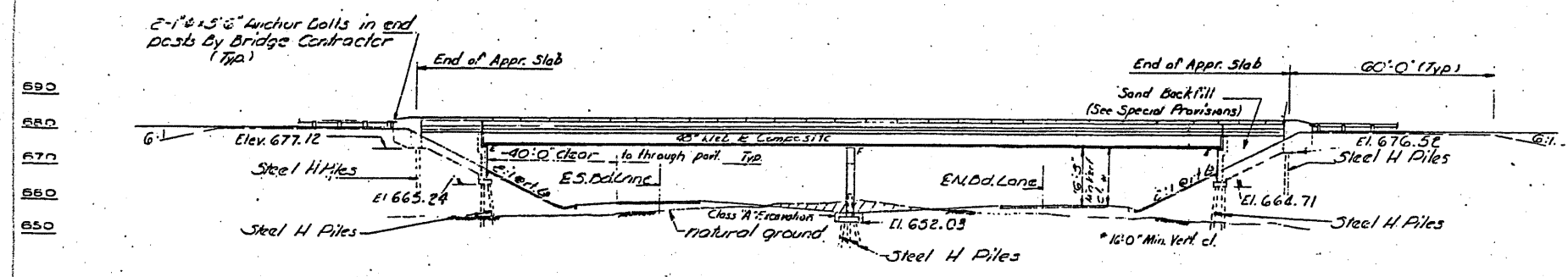
SM: #4 Bolt Spike in power pole 168' El. Sta. 1812+60.03
Elev. 651.61

STATE OF ILLINOIS
DEPARTMENT OF PUBLIC WORKS & BUILDINGS
DIVISION OF HIGHWAYS

0044

PROJECT NO.	SECTION	SHEET NO.	TOTAL SHEETS
68-2HB	MONTGOMERY	28	9
SHEET NO. 1		12 SHEETS	

CONTRACT: 72D87
SHEET 4 OF 16



STATION 1812+60.03
BUILT 19 BY
STATE OF ILLINOIS
FAI. RT. 55 SEC. 68-2HB
FA. PROJ. I-55-2(53)
LOADING HS 15

NAME PLATE
See Std. 2113

ELEVATION

CURVE DATA
FAI. RT. 55

Δ	= 20°35'43"
D	= 1700'
T	= 1039.35'
L	= 27056.33'
R	= 5729.35'
E	= 93.51'
SE	= 0028 1/4

GENERAL NOTES

All reinforcement bars shall be lapped 24 diameters unless otherwise shown.

The Basic Lead Silico Chromate paint system shall be used for shop and field painting of structural steel.

Field welding of construction accessories will not be permitted to the bottom flange of beams or girders nor to the top flange for a distance equal to one-fourth the span length each way from the pier supports. Field welding in other areas will be permitted only when approved by the Engineer.

Anchor bolts shall be set before riveting diaphragms over supports.

Slope wall shall be reinforced with welded wire fabric 6" x 6" mesh, weighing 58# per 100 sq. ft.

The Contractor shall drive three Steel H test piles in a permanent location. One at each Abutment and one at the pier as directed by the Engineer before ordering the remainder of piles.

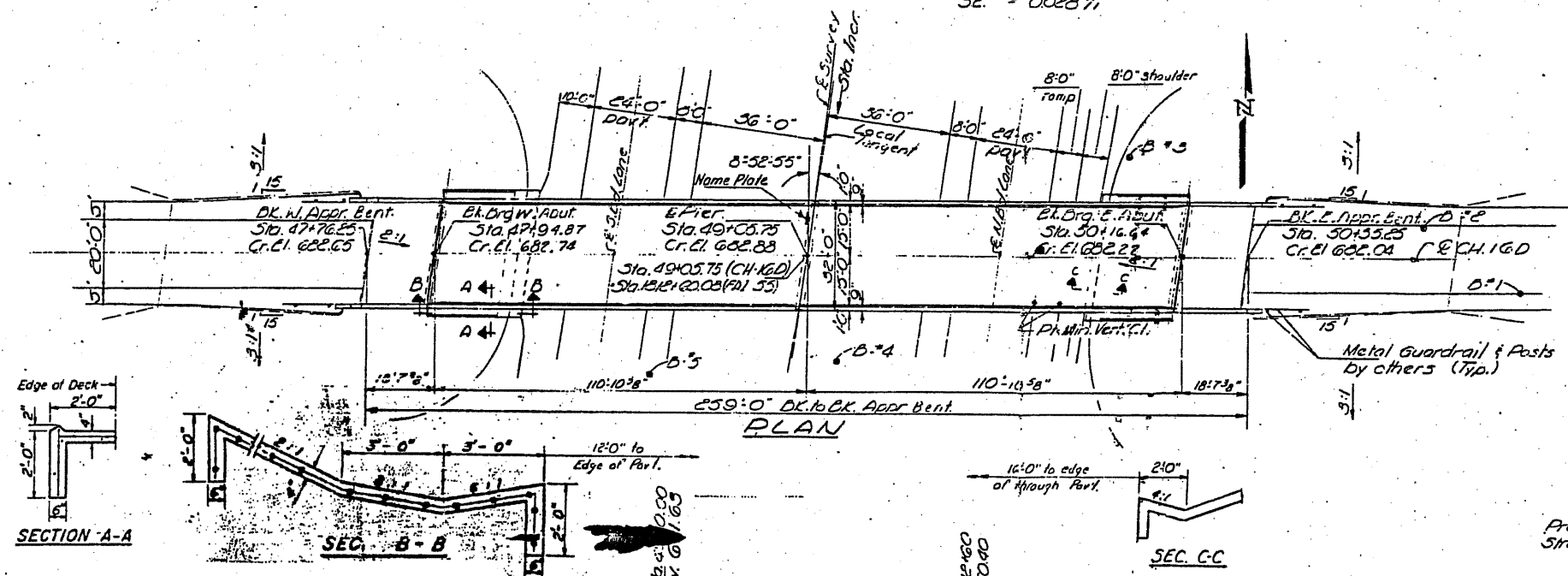
Class A Excavation for structures includes excavation for slope wall.

The embankment configuration shown shall be the minimum embankment that must be constructed prior to construction of the abutments.

The concrete rail section above the mandatory construction joint at the top of the slab shall be constructed of Class X Concrete, except the aggregates shall conform to the requirements of Handrail Concrete.

Calculated plan weight of structural steel = 229,970 lbs.

Field connections shall be bolted using high strength bolts. Bolts 3/4", open holes 5/8", unless otherwise noted. Drive all steel piles to refusal.



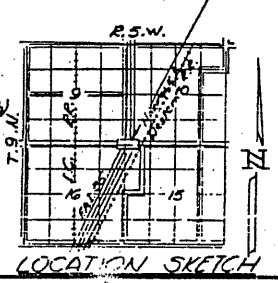
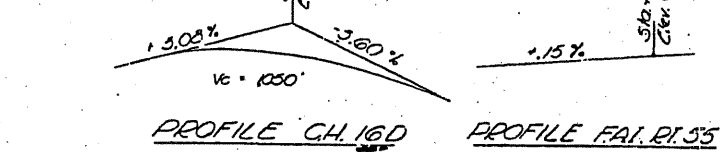
TOTAL BILL OF MATERIAL

ITEM	UNIT	SUPER	SUB	TOTAL
Class A Excavation for Struct.	Cu. Yds.		55	55
Protective Coat	Sq. Yds.	1029		1029
Class X Concrete	Cu. Yds.	255.8	182.9	438.7
Structural Steel	L.S.	L.S.		L.S.
Stud Shear Connectors	Each	1650		1650
Aluminum Railing	Lin. ft.	508		508
Reinforcement Bars	Lbs.	57,780	23,620	81,400
Steel Piles (8BP36)	Lin. ft.		2,138	2,138
Test Piles Steel (8BP36)	Each		3	3
Name Plates	Each		1	1
Slope Wall (4")	Sq. Yds.			294
Preformed Jt. Sealer	Lin. ft.	64		64
Sand Backfill	Cu. Yds.		177	177

DESIGNED BY: [Signature]
CHECKED BY: [Signature]
DRAWN BY: [Signature]
CHECKED BY: [Signature]

EXAMINED BY: [Signature]
PASSED BY: [Signature]
APPROVED BY: [Signature]

DATE: May 19 1970



0680044
GENERAL PLAN & ELEVATION
PROJ. I-55-2 (53) 61
CH. 16D OVER FAI. RT. 55
FAI. RT. 55 SEC. 68-2HB
MONTGOMERY COUNTY
STATION 1812+60.03 (FAI. 55)
STATION 49+05.75 (CH. 16D)

No. 1
STRUCTURE

FOR INFORMATION ONLY

EXISTING PLANS, SN 068-0044
VARIOUS ROUTES
D6REHAB BDGE PAINTING 2011
MONT, SANG, SCHUY COUNTIES