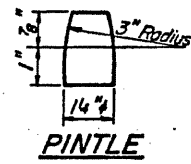
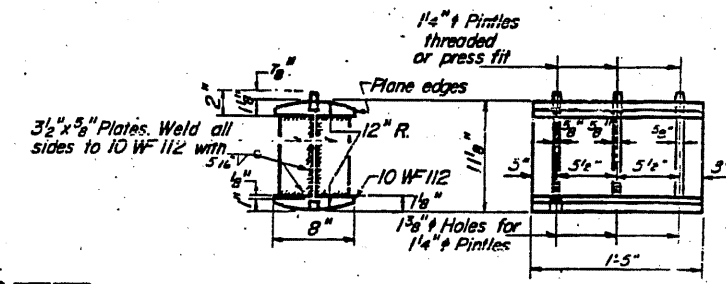
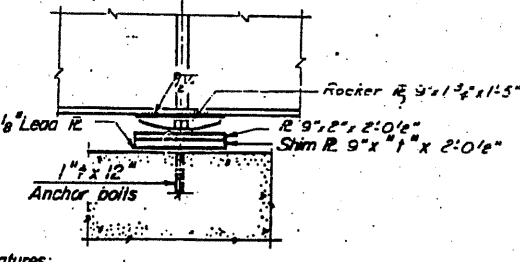
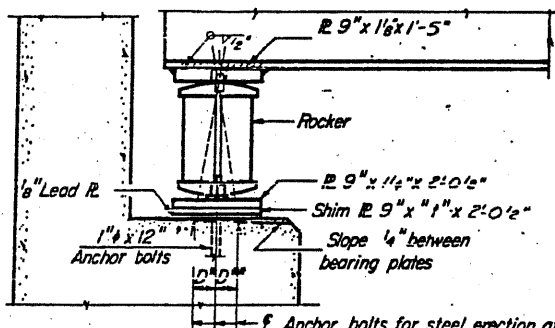


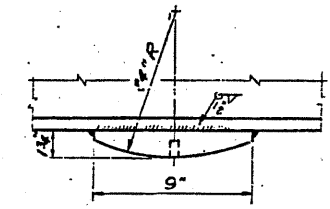
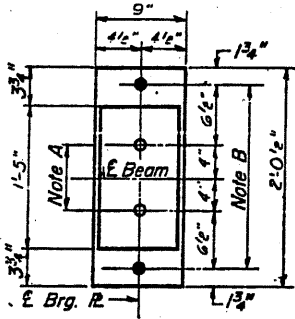
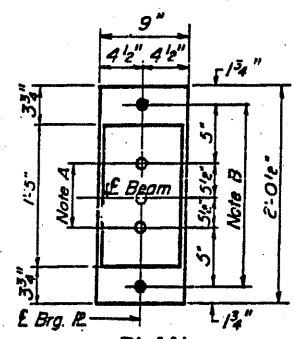
0044

PROJECT NO.	68-218 MONTGOMERY	28	15	SHEET NO. 7
DATE				12 SHEETS



SHIM PLATES
Thickness - 1" in inches

Beams	1	2	3	4	5
W. Abut.	0	0	1/2	1/2	1/2
Pier	1/2	1/2	1/2	0	0
E. Abut.	1/2	1/2	1/2	0	0



NOTE A
1/2" Holes - 1" deep in top R.
for pintles. Thread or press fit
pintles into bottom R.

NOTE B
1/2" Holes for 1" anchor bolts.
2 1/2" x 2 1/2" x 5/16" R. Washers
under nut.

Note: See Sheet # 6 for framing plan.

NOTES ON SETTING OF ANCHOR BOLTS AT EXP. BRGS.

- a) D* (Side of brg. away from fixed brg.)
D* = 1/8" per each 100' of expansion for
every 15° fall below the normal temp
of 50°F.
- D** (Side of brg. toward fixed brg.)
D** = 1/8" per each 100' of expansion for
every 15° rise above the normal temp.
of 50°F.

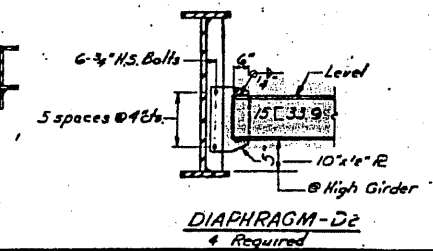
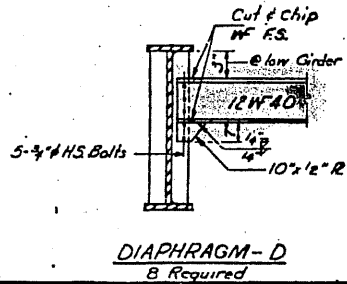
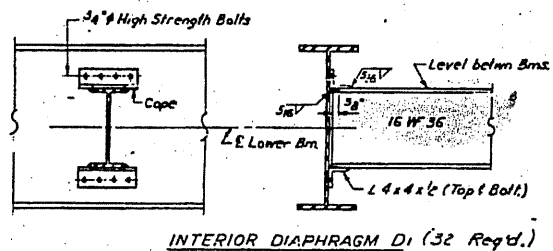
Four beams have been erected and dimensions D* or D**
determined, holes shall be drilled and anchor bolts shall
be grouted in place. All fixed anchor bolts may be built
into the masonry.

BEARING ASSEMBLY DETAILS

ELEVATION TOP OF WEB
(For fabrication only.)

Loc. of Girder	1	2	3	4	5
E Brg. W. Abut.	681.96	682.06	682.10	682.07	681.97
E Field Splice 1	682.14	682.23	682.27	682.23	682.14
E Brg. Pier	681.01	682.10	682.13	682.09	682.00
E Field Splice 2	682.00	682.09	682.12	682.08	681.98
E Brg. E. Abut.	681.47	681.36	681.59	681.54	681.43

DESIGNED	A. A. Hunsicker	EXAMINED	MAY 19 1970
CHECKED	A. V. HANNEY	PASSED	W. E. [Signature]
S.L.		APPROVED	Richard H. [Signature]
DRAWN	P.G. Barnett		
CHECKED	S.Y.K.		



CROSS FRAMES &
BEARING DETAILS
FAI RT 55 SEC. 68-2 HB
MONTGOMERY COUNTY
STA. 1812 + 60.08 (FAI. 55)

2-B 9-1-65

FOR INFORMATION ONLY

EXISTING PLANS, SN 068-0044
VARIOUS ROUTES
D6REHAB BDGE PAINTING 2011
MONT, SANG, SCHUY COUNTIES