

STATE OF ILLINOIS
 DEPARTMENT OF TRANSPORTATION
 DIVISION OF HIGHWAYS

**PROPOSED
 HIGHWAY PLANS**

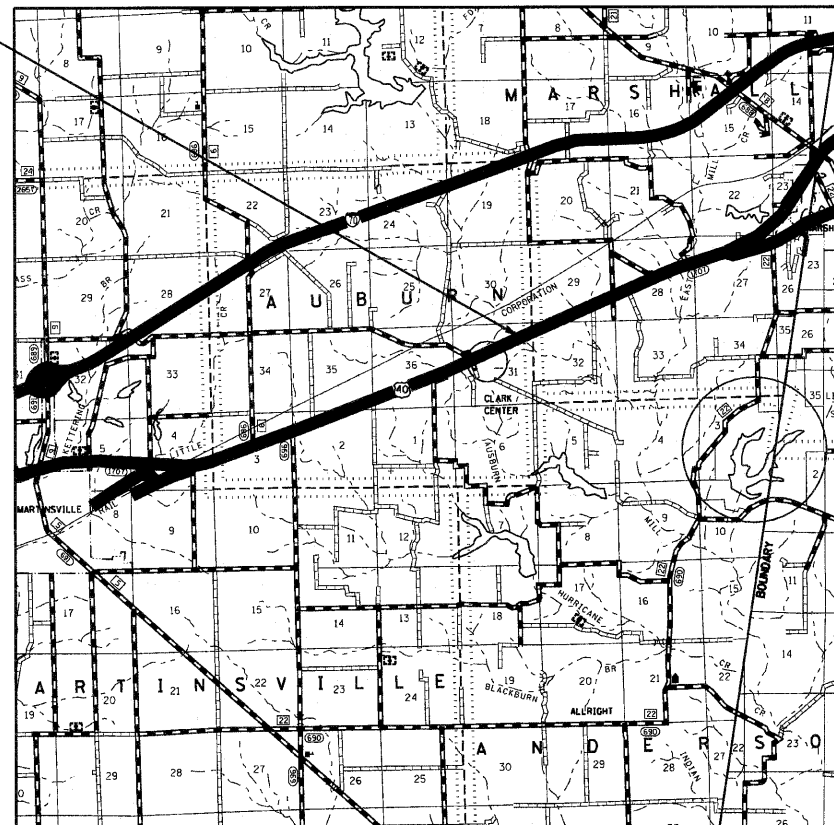
FAS ROUTE 1707 (US 40)
 SECTION (BX-B)B-1
 PROJECT: ACRS-1707(105)
 BRIDGE REPLACEMENT
 CLARK COUNTY

C-97-080-06

FOR INDEX OF SHEETS, SEE SHEET NO. 2

ADT (2008) = 2,950

EXISTING STRUCTURE
 SN 012-0020
 STA 3185+64.00
 PROPOSED STRUCTURE
 SN 012-0073
 STA 3185+84.00

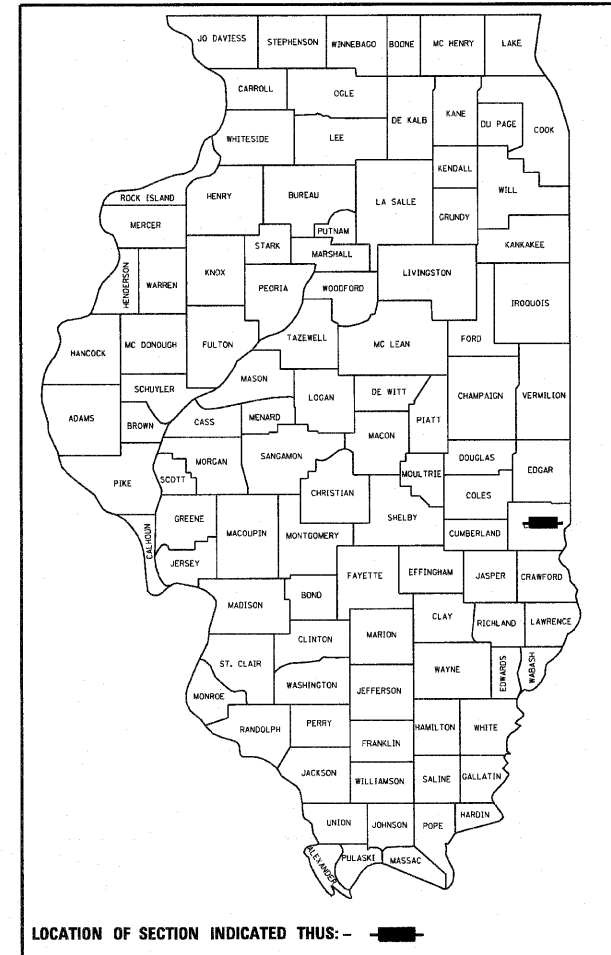


GROSS LENGTH = 815 FT. = 0.15 MILE
 NET LENGTH = 815 FT. = 0.15 MILE

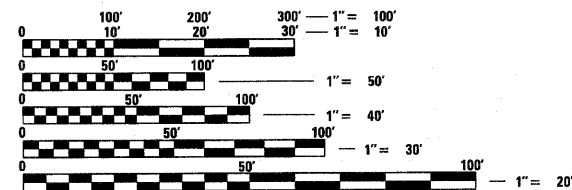
F.A.S. RTE.	SECTION	COUNTY	TOTAL SHEETS	SHEET NO.
1707	(BX-B)B-1	Clark	44	1
		ILLINOIS	CONTRACT NO.	74169

* 44 + 1 = 45

D-97-042-06



LOCATION OF SECTION INDICATED THUS: ———



FULL SIZE PLANS HAVE BEEN PREPARED USING STANDARD ENGINEERING SCALES. REDUCED SIZED PLANS WILL NOT CONFORM TO STANDARD SCALES. IN MAKING MEASUREMENTS ON REDUCED PLANS, THE ABOVE SCALES MAY BE USED.

J.U.L.I.E.
 JOINT UTILITY LOCATION INFORMATION FOR EXCAVATION
 1-800-892-0123
 OR 811

PROJECT ENGINEER: MARK DAUGHERTY
 PROJECT MANAGER: BRIAN BIERMAN

CONTRACT NO. 74169

STATE OF ILLINOIS
 DEPARTMENT OF TRANSPORTATION
 DIVISION OF HIGHWAYS

SUBMITTED *August 20 2010*
Scott E. Stitt, P.E.
 DEPUTY DIRECTOR OF HIGHWAYS, REGION ENGINEER

October 1 2010
Scott E. Stitt, P.E.
 ENGINEER OF DESIGN AND ENVIRONMENT

October 1 2010
Christine M. Reed, P.E.
 DIRECTOR OF HIGHWAYS, CHIEF ENGINEER

**PRINTED BY THE AUTHORITY
 OF THE STATE OF ILLINOIS**