

B.M. J211 - Disk set in the Top of the S.E. End of the Back Wall @ the West Corner of Structure No. 012-0020, Sta. 3184+59.10, 18.0' Lt. Elev. = 555.36

EXISTING STRUCTURE No. 012-0020: Built in 1952 as F.A. Rte. 12 Section B-XB. The structure is a 3 Span continuous Haunched Concrete Deck Girders with a 7" Concrete Deck cast Monolithically. It has a Bk. of Abut. to Bk. of Abut. Length of 193'-6" and 35'-8" Out to Out Horizontal width. Remove concrete slopewall's. New structure will be built using Stage Construction. No Salvage.

STATE OF ILLINOIS
DEPARTMENT OF TRANSPORTATION

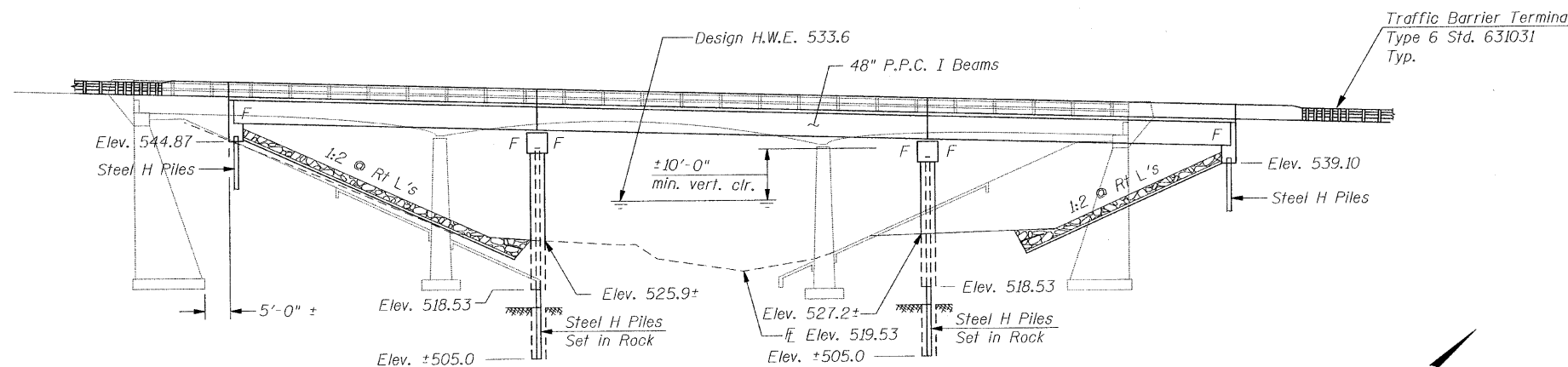
DESIGN SCOUR ELEVATION TABLE

Design Scour Elevation (ft.)	W. Abut.	Pier 1	Pier 2	E. Abut.
	545.3	515.53	515.53	539.4

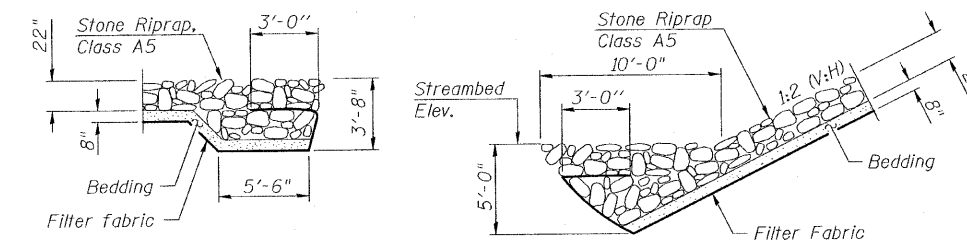
WATERWAY INFORMATION

Drainage Area = 31.9 SQ. MI. Ex. Low Grade Elev. 541.00 @ Sta. 3192+00

Flood	Freq. Yr.	Q C.F.S.	Opening Sq. Ft.		Nat. H.W.E.	Head - Ft.		Headwater EL.	
			Exist.	Prop.		Exist.	Prop.	Exist.	Prop.
Design	10	4790	664	774	532.0	1.9	1.7	533.9	533.7
Base	50	7760	818	958	533.6	3.0	2.7	536.6	536.3
Overtopping	100	9100	889	1042	534.3	3.5	3.0	537.8	537.3
Max. Calc.	500	12400	1036	1214	535.7	4.5	4.0	540.2	539.7

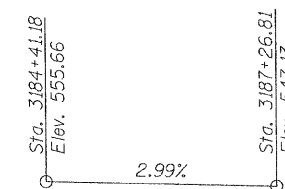


ELEVATION



SECTION B-B

SECTION A-A



PROPOSED PROFILE

LOADING HL-93

Allow 50#/sq. ft. for future wearing surface.

DESIGN SPECIFICATIONS

2007 AASHTO LRFD Bridge Design Specifications with 2009 Interims

DESIGN STRESSES

FIELD UNITS

$f'_c = 3,500$ psi
 $f_y = 60,000$ psi (Reinforcement)

PRECAST PRESTRESSED UNITS

$f'_c = 6,000$ psi
 $f'_{ci} = 5,000$ psi
 $f_{pu} = 270,000$ psi (1/2" low lax strands)
 $f_{pbt} = 201,960$ psi (1/2" low lax strands)

SEISMIC DATA

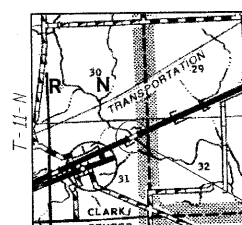
Seismic Performance Zone (SPZ) = 2
Design Spectral Acceleration at 1.0 Sec. (SD1) = 0.176g
Design Spectral Acceleration at 0.2 Sec. (SDs) = 0.370g
Soil Site Class = D

STATION 3185+84.00
BUILT 20xx BY
STATE OF ILLINOIS
F.A.S. ROUTE 1707
SECTION (BX-B)B-1
LOADING HL-93
STRUCTURE NO. 012-0073

NAME PLATE

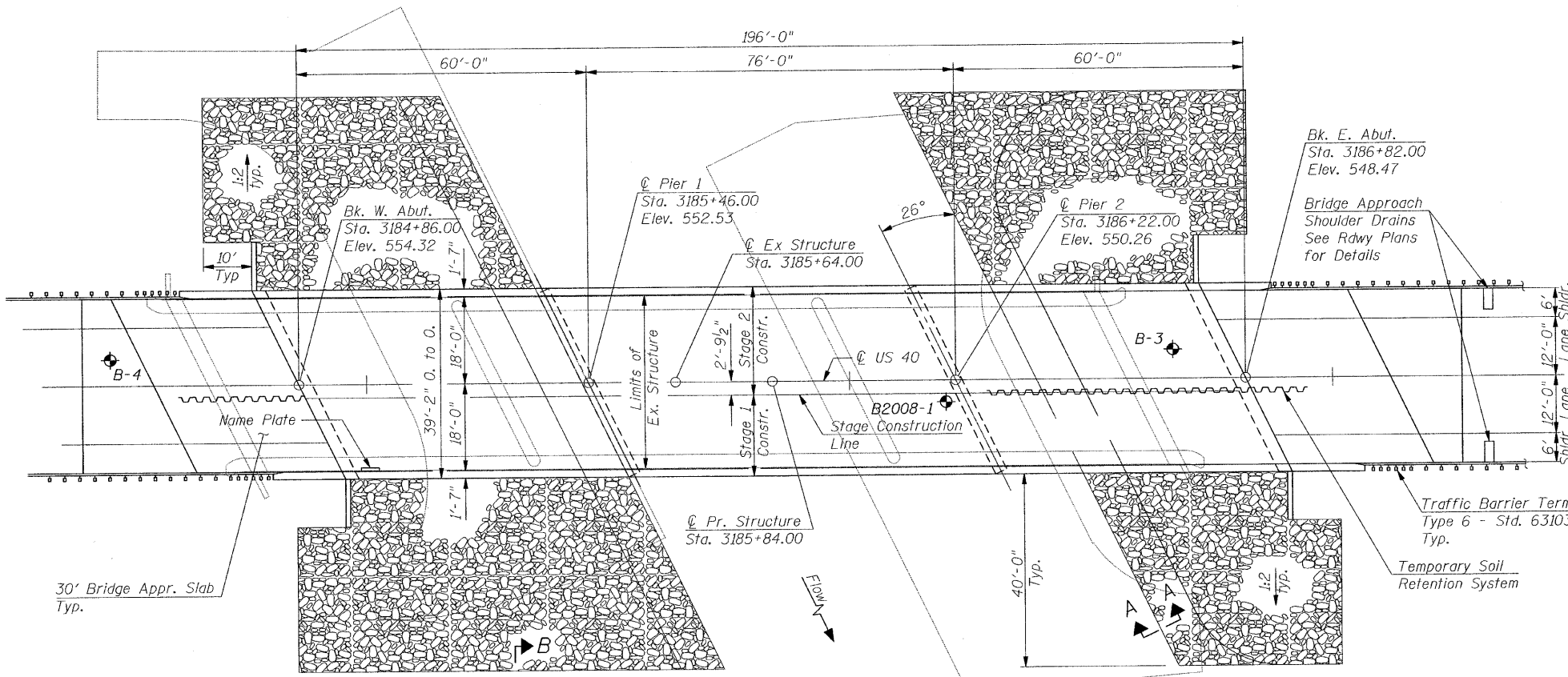
See Std. 515001

R-12-W 2nd P.M.



LOCATION SKETCH

GENERAL PLAN
US 40 OVER MILL CREEK
FAS ROUTE 1707
SECTION (BX-B)B-1
CLARK COUNTY
STATION 3185+84.00
STRUCTURE NO. 012-0073



PLAN

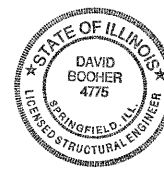
DESIGNED	SCD
CHECKED	DRB
DRAWN	THW
CHECKED	SCD



IE CONSULTANTS, INC
6420 SOUTH SIXTH STREET
SPRINGFIELD, ILLINOIS 62712
TEL. (217) 529-8027
FAX (217) 529-4543
IESPRINGFIELD@IE-CONSULTANTS.COM
WWW.IE-CONSULTANTS.COM

APPROVED
FOR STRUCTURAL ADEQUACY ONLY

Robert E. Anderson
ENGINEER OF BRIDGES AND STRUCTURES



David Booher, Illinois S.E. 081-004775
Expires 11-30-2010
9-20-2010 Date

SHEET NO.	F.A.S. RTE.	SECTION	COUNTY	TOTAL SHEETS	SHEET NO.
1 OF 29 SHEETS	1707	(BX-B)B-1	CLARK		10
CONTRACT NO. 74169					
FED. ROAD DIST. NO. - ILLINOIS FED. AID PROJECT					