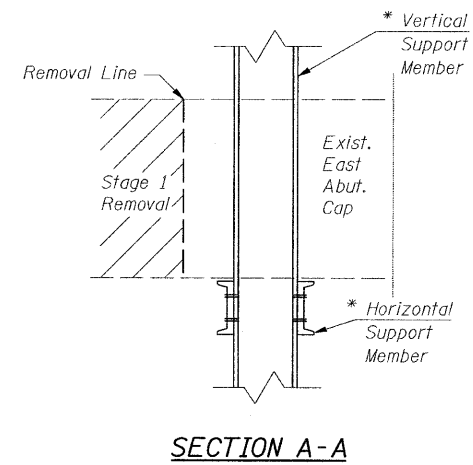
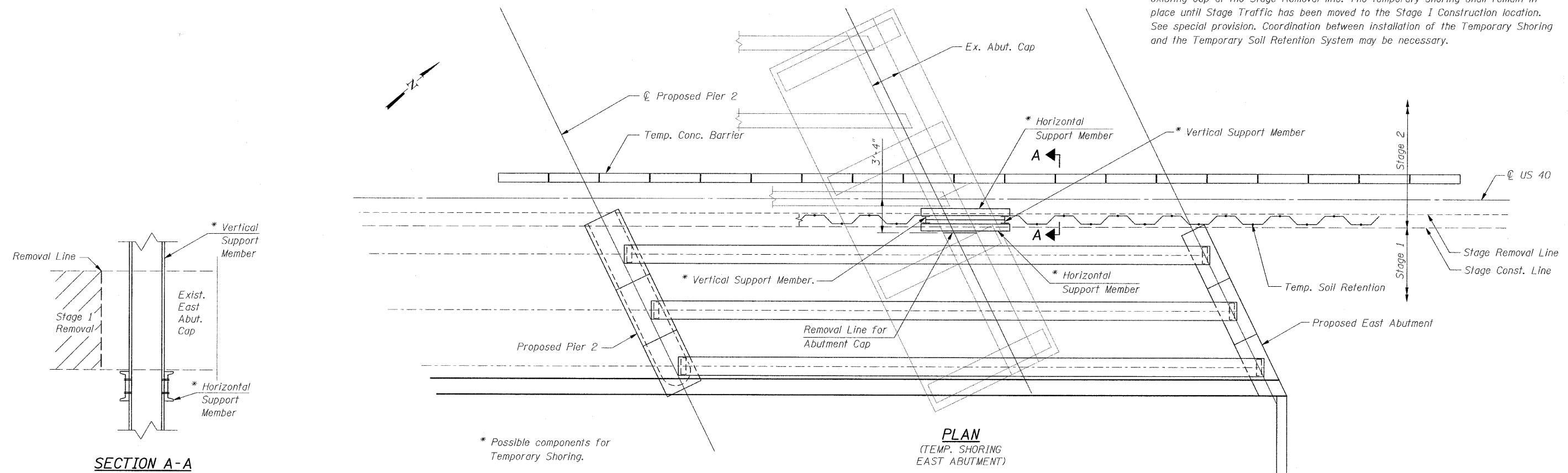


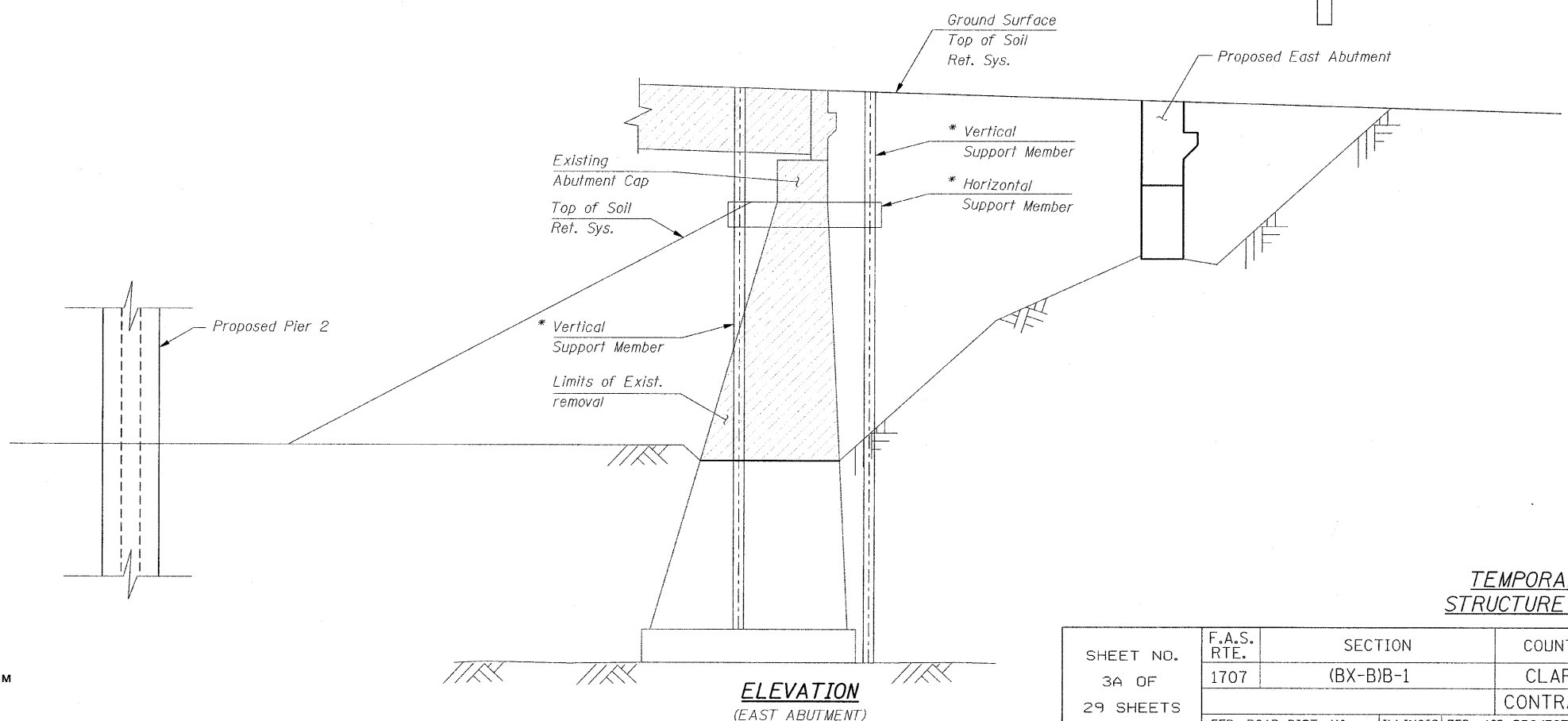
STATE OF ILLINOIS
DEPARTMENT OF TRANSPORTATION

Shoring Notes:
The existing East Abutment cap shall be shored as shown prior to cutting the existing cap at the Stage Removal line. The temporary shoring shall remain in place until Stage Traffic has been moved to the Stage I Construction location. See special provision. Coordination between installation of the Temporary Shoring and the Temporary Soil Retention System may be necessary.



* Possible components for Temporary Shoring.

PLAN
(TEMP. SHORING EAST ABUTMENT)



ELEVATION
(EAST ABUTMENT)

DESIGNED	SCD
CHECKED	DRB
DRAWN	THW
CHECKED	SCD

ie
consultants

IE CONSULTANTS, INC
6420 SOUTH SIXTH STREET
SPRINGFIELD, ILLINOIS 62712
TEL. (217) 529-8027
FAX (217) 529-4543
IESPRINGFIELD@IE-CONSULTANTS.COM
WWW.IE-CONSULTANTS.COM

**TEMPORARY SHORING
STRUCTURE NO. 012-0073**

SHEET NO.	F.A.S. RTE.	SECTION	COUNTY	TOTAL SHEETS	SHEET NO.
3A OF	1707	(BX-B)B-1	CLARK		124
29 SHEETS	CONTRACT NO. 74169				
FED. ROAD DIST. NO. - ILLINOIS FED. AID PROJECT					