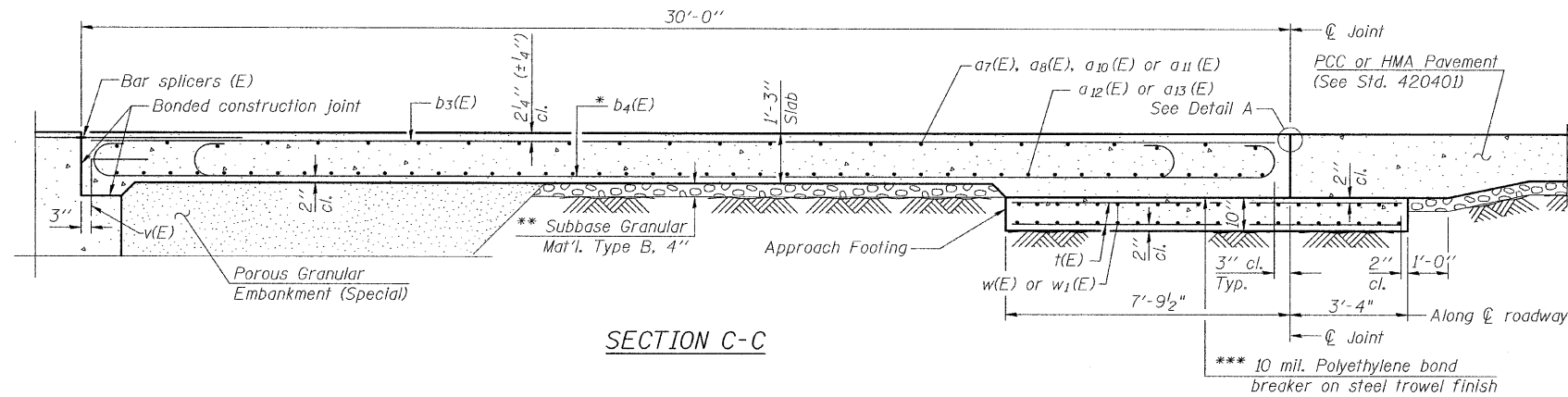


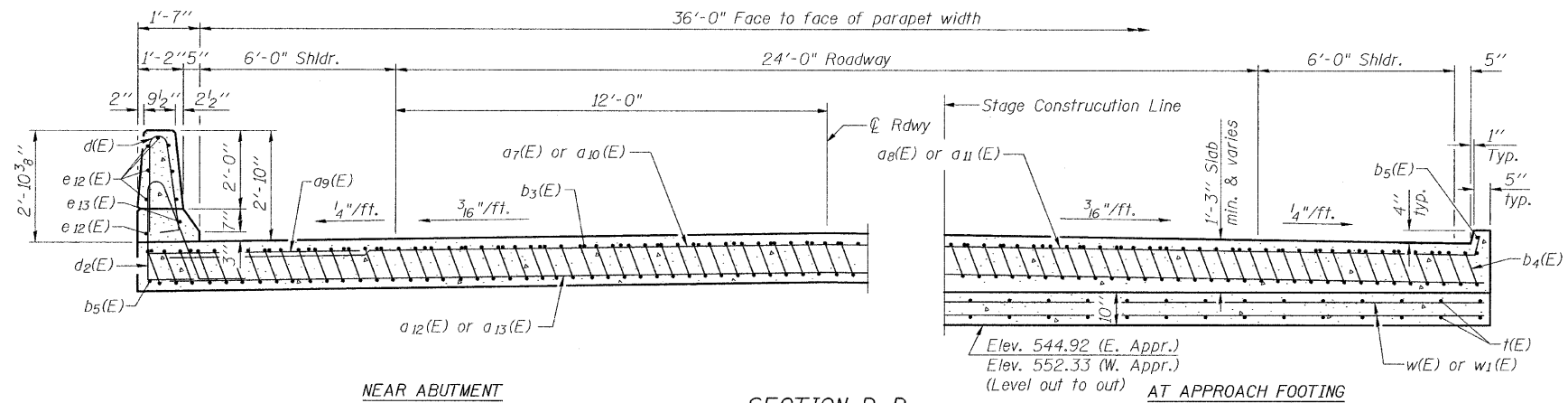
STATE OF ILLINOIS
DEPARTMENT OF TRANSPORTATION

Notes:

See sheet 14 of 29 for Detail A and View B-B.
Approach slab and parapet concrete shall be paid for as Concrete Superstructure.
Approach footing concrete shall be paid for as Concrete Structures.
Reinforcement shall be paid for as Reinforcement Bars, Epoxy Coated.
For v(E) bar details, see sheet 13 of 29.
The approach footing maximum applied service bearing pressure (Qmax) = 2.0 ksf.
For bar splicer details, see sheet 25 of 29.
Cost of excavation for approach footing included with Concrete Structures.
For Porous Granular Embankment (Special) and drainage treatment details, see sheet 2 of 29.
For additional parapet details, see sheet 2 of 29.



SECTION C-C

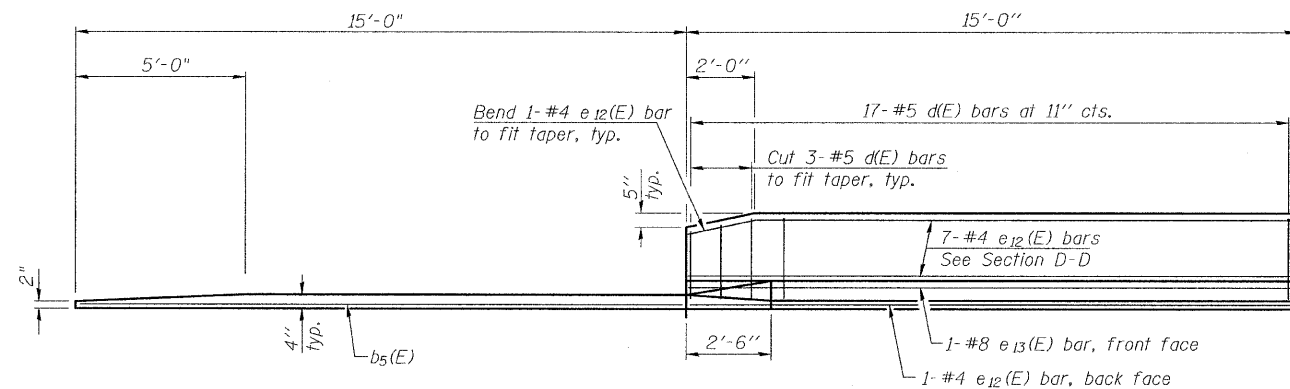


NEAR ABUTMENT

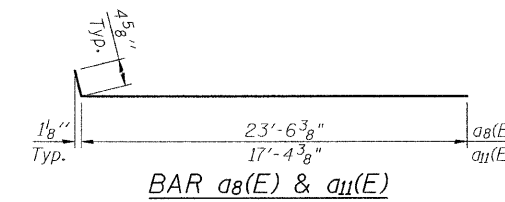
SECTION D-D

(See Plan for dimensions not shown)

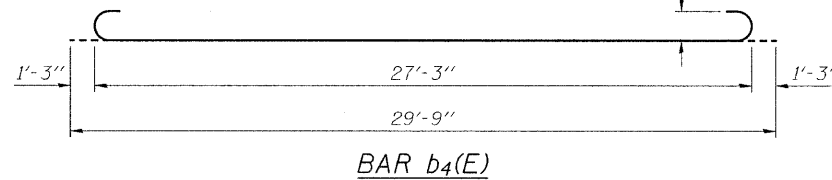
AT APPROACH FOOTING



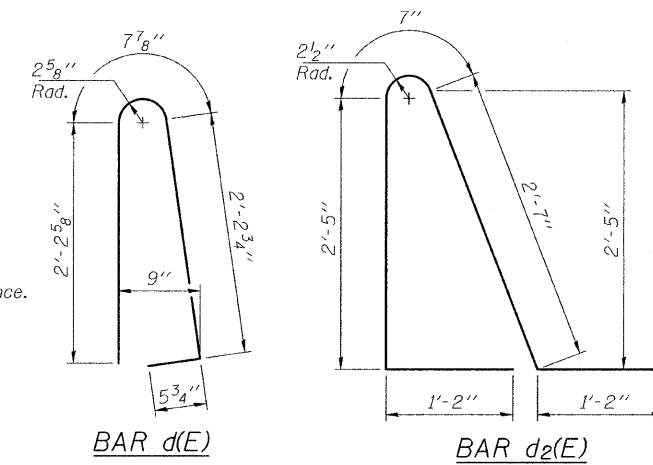
VIEW E-E



BAR a8(E) & a11(E)



BAR b4(E)



BAR d(E)

BAR d2(E)

TWO APPROACHES
BILL OF MATERIAL

Bar	No.	Size	Length	Shape
a7(E)	24	#4	24'-6"	—
a8(E)	26	#4	23'-9"	—
a9(E)	48	#6	6'-6"	—
a10(E)	24	#4	18'-4"	—
a11(E)	26	#4	17'-9"	—
a12(E)	90	#5	23'-9"	—
a13(E)	90	#5	17'-7"	—
b3(E)	62	#4	29'-8"	—
b4(E)	180	#9	29'-9"	—
b5(E)	8	#4	14'-8"	—
d(E)	68	#5	5'-7"	—
d2(E)	68	#5	7'-11"	—
e12(E)	32	#4	14'-8"	—
e13(E)	4	#8	14'-8"	—
t(E)	152	#4	10'-9"	—
w(E)	80	#5	24'-5"	—
w1(E)	80	#5	18'-4"	—
Concrete Superstructure		Cu. Yd.	123.9	
Concrete Structures		Cu. Yd.	25.9	
Reinforcement Bars, Epoxy Coated		Pound	31,360	
Bar Splicers		Each	220	

(Sheet 2 of 2)
BRIDGE APPROACH SLAB DETAILS
STRUCTURE NO. 012-0073

DESIGNED	SCD
CHECKED	DRB
DRAWN	THW
CHECKED	SCD

ie consultants
IE CONSULTANTS, INC
6420 SOUTH SIXTH STREET
SPRINGFIELD, ILLINOIS 62712
TEL. (217) 529-8027
FAX (217) 529-4543
IESPRINGFIELD@IE-CONSULTANTS.COM
WWW.IE-CONSULTANTS.COM

BA-R 7-1-10

SHEET NO. 15 OF 29 SHEETS	F.A.S. RTE. 1707	SECTION (BX-B)B-1	COUNTY CLARK	TOTAL SHEETS 44	SHEET NO. 24
	CONTRACT NO. 74169			FED. ROAD DIST. NO. ILLINOIS FED. AID PROJECT	