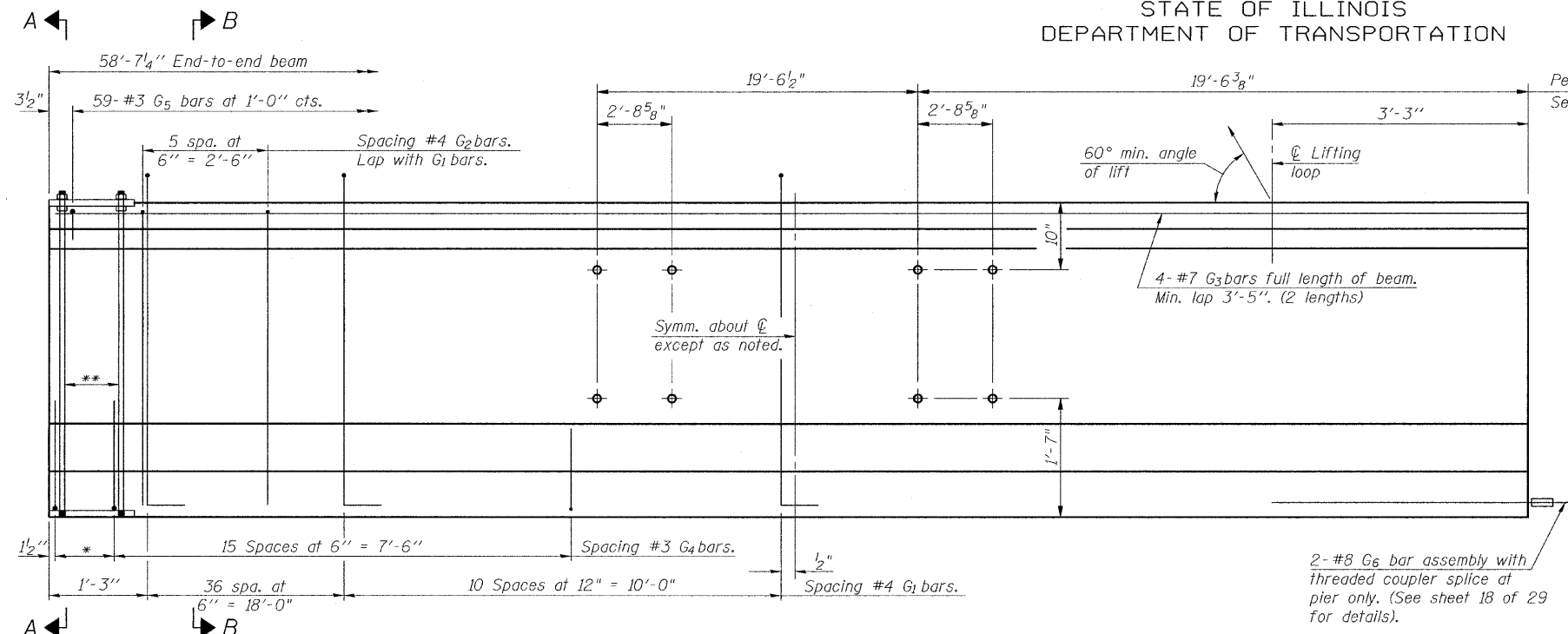
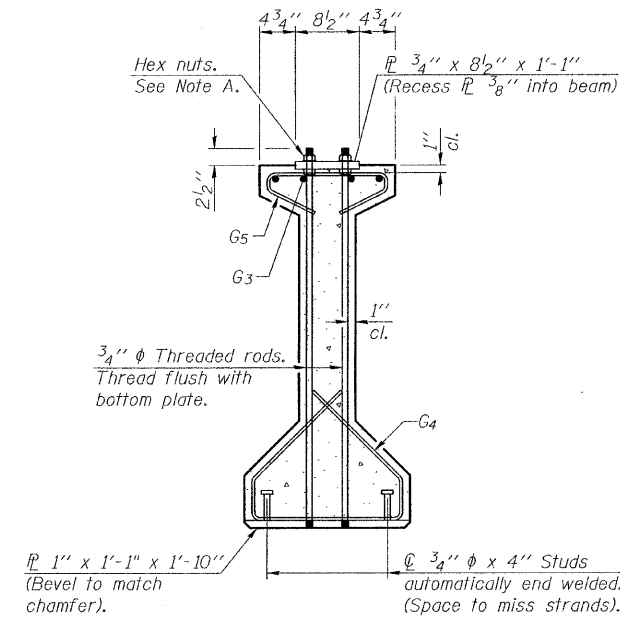


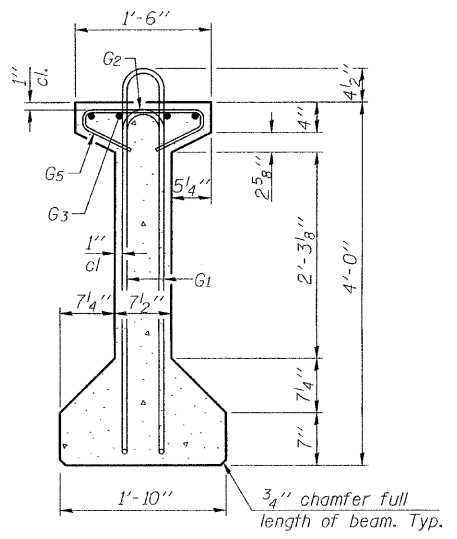
STATE OF ILLINOIS
DEPARTMENT OF TRANSPORTATION



Permanent Bracing hole locations
See sheet 18 of 29 for Details.



SECTION A-A

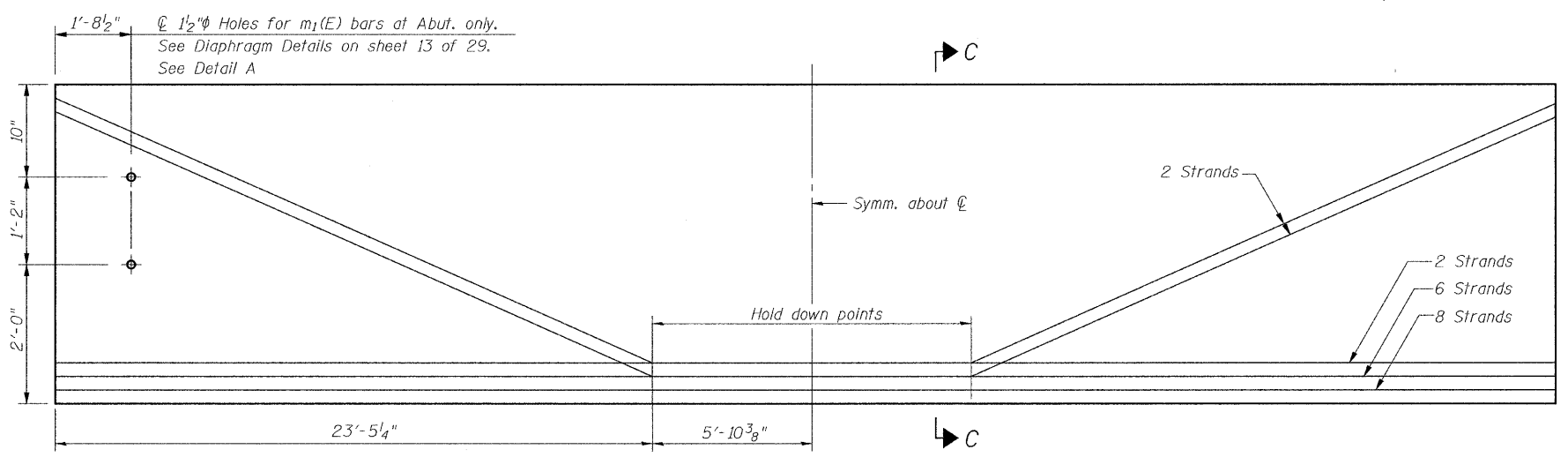


SECTION B-B

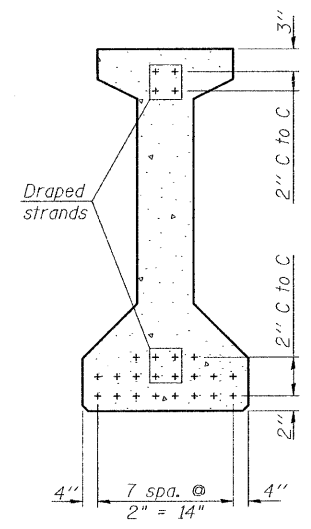
ELEVATION OF BEAM
(Showing reinforcement & dimensions)
Span 1, Looking North
Span 3, Looking South

Note A:
Hex nuts (top and bottom)
with lock washers (top).
Only tighten sufficiently
to compress lock washers.

* 3 spaces at 3" = 9".
** 4- 3/4" diameter threaded dowel rods
at 3" cts., Each Face.



ELEVATION OF BEAM
(Showing prestressing steel)



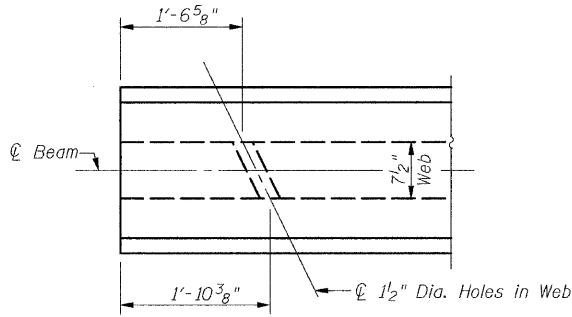
SECTION C-C

***BAR LIST
ONE BEAM ONLY

Bar	No.	Size	Length	Shape
G1	94	#4	9'-6"	∩L
G2	12	#4	7'-11"	∩
G3	8	#7	31'-4"	—
G4	38	#3	5'-3"	∩
G5	59	#3	2'-9"	∩
G6	2	#8	6'-6"	∩

***For information only

Notes:
See sheet 18 of 29 for additional details
and Bill of Material.
Required release strength, f'ci, shall
be 5,000 psi.



DETAIL A

DESIGNED	SCD
CHECKED	DRB
DRAWN	THW
CHECKED	SCD

ie consultants
IE CONSULTANTS, INC
6420 SOUTH SIXTH STREET
SPRINGFIELD, ILLINOIS 62712
TEL. (217) 529-8027
FAX (217) 529-4543
IESPRINGFIELD@IE-CONSULTANTS.COM
WWW.IE-CONSULTANTS.COM

PI-4-48 11-1-09

48" PPC I-BEAM
SPAN 1 & 3
STRUCTURE NO. 012-0073

SHEET NO. 17 OF 29 SHEETS	F.A.S. RTE.	SECTION	COUNTY	TOTAL SHEETS	SHEET NO.
	1707	(BX-B)B-1	CLARK	44	26
CONTRACT NO. 74169					
FED. ROAD DIST. NO. _ ILLINOIS FED. AID PROJECT					