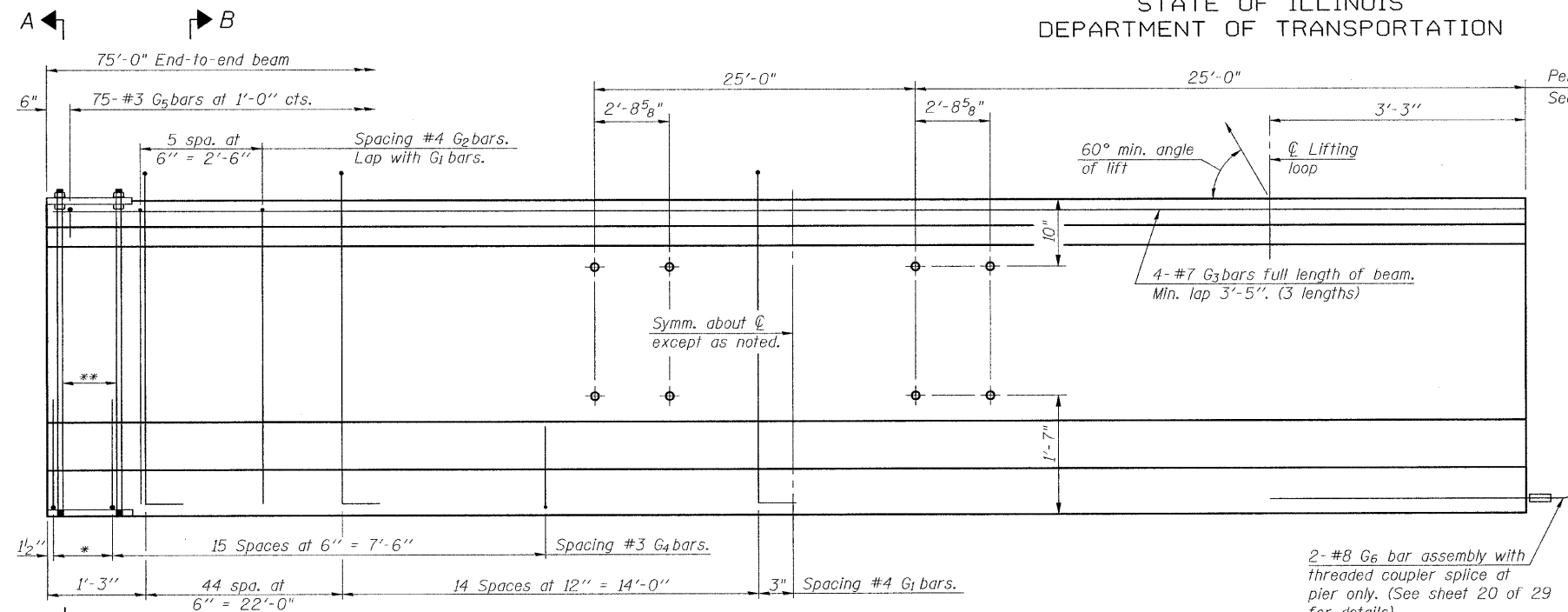


STATE OF ILLINOIS  
DEPARTMENT OF TRANSPORTATION



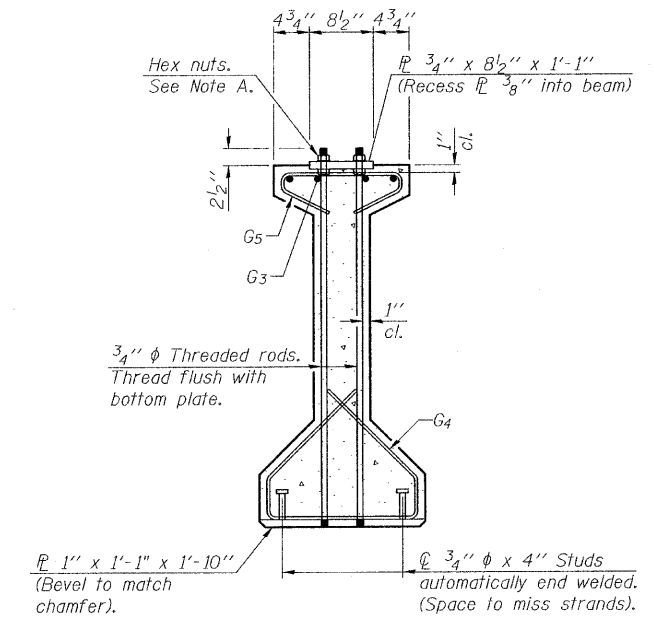
Permanent Bracing hole locations  
See sheet 20 of 29 for Details.

**ELEVATION OF BEAM**  
(Showing reinforcement & dimensions)  
Looking North

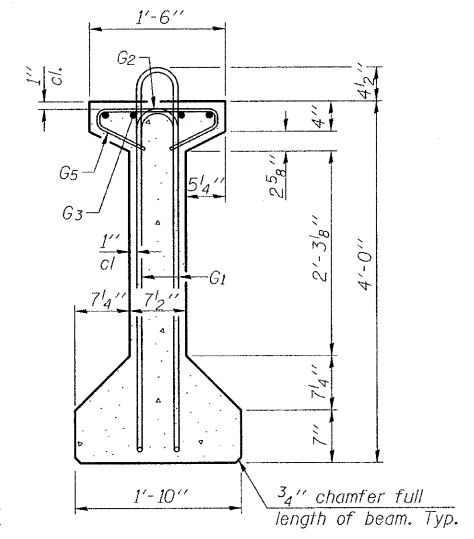
\* 3 spaces at 3" = 9".  
\*\* 4-3/4" φ threaded dowel rods at 3" cts., Each Face.

2- #8 G6 bar assembly with threaded coupler splice at pier only. (See sheet 20 of 29 for details).

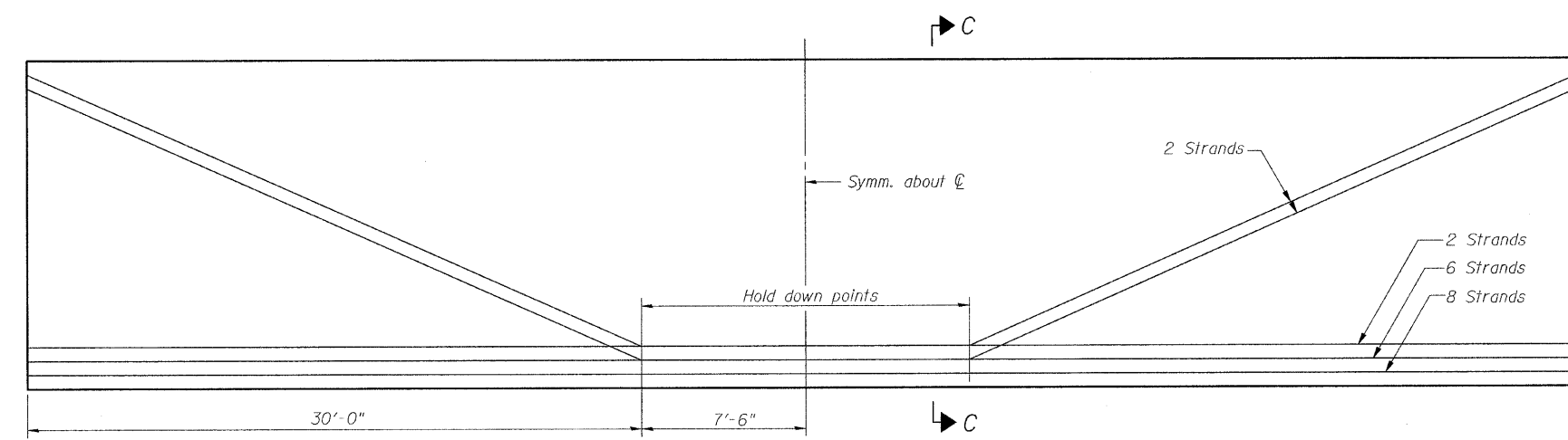
Note A:  
Hex nuts (top and bottom) with lock washers (top). Only tighten sufficiently to compress lock washers.



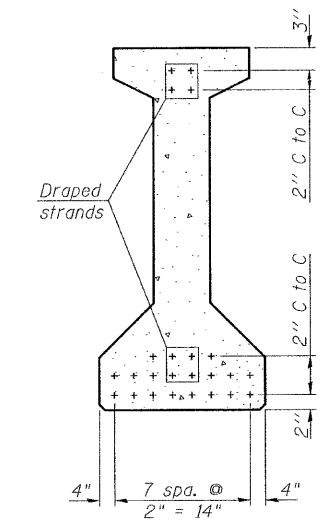
**SECTION A-A**



**SECTION B-B**



**ELEVATION OF BEAM**  
(Showing prestressing steel)



**SECTION C-C**

**\*\*\*BAR LIST  
ONE BEAM ONLY**

Bar	No.	Size	Length	Shape
G <sub>1</sub>	118	#4	9'-6"	∩L
G <sub>2</sub>	12	#4	7'-11"	∩
G <sub>3</sub>	12	#7	27'-9"	∩
G <sub>4</sub>	38	#3	5'-3"	∩
G <sub>5</sub>	75	#3	2'-9"	∩
G <sub>6</sub>	2	#8	6'-6"	∩

\*\*\*For information only

Notes:  
See sheet 20 of 29 for additional details and Bill of Material.  
Required release strength, f'ci, shall be 5,000 psi.

**48" PPC I-BEAM  
SPAN 2  
STRUCTURE NO. 012-0073**

DESIGNED	SCD
CHECKED	DRB
DRAWN	THW
CHECKED	SCD

**ie**  
consultants

IE CONSULTANTS, INC.  
6420 SOUTH SIXTH STREET  
SPRINGFIELD, ILLINOIS 62712  
TEL. (217) 529-8027  
FAX (217) 529-4543  
IESPRINGFIELD@IE-CONSULTANTS.COM  
WWW.IE-CONSULTANTS.COM

PI-4-48 11-1-09

SHEET NO. 19 OF 29 SHEETS	F.A.S. RTE.	SECTION	COUNTY	TOTAL SHEETS	SHEET NO.
	1707	(BX-B)B-1	CLARK	44	28
CONTRACT NO. 74169					
FED. ROAD DIST. NO. ILLINOIS FED. AID PROJECT					