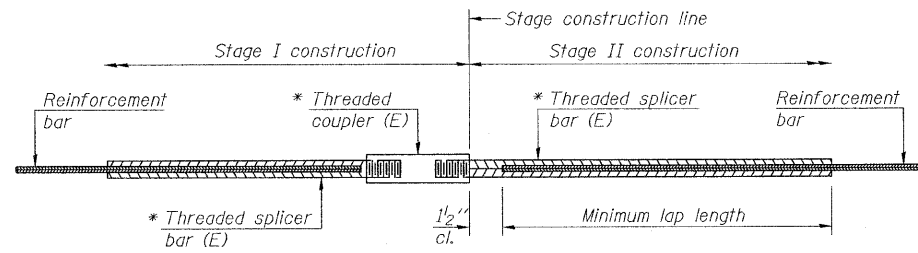


STATE OF ILLINOIS  
DEPARTMENT OF TRANSPORTATION



STANDARD BAR SPLICER ASSEMBLY

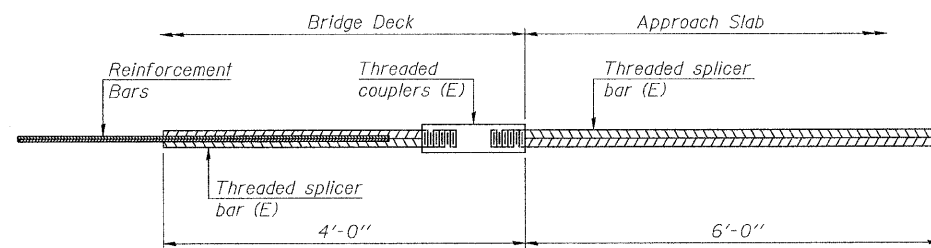
Bar size to be spliced	Minimum Lap Lengths			
	Table 1	Table 2	Table 3	Table 4
3, 4	1'-5"	1'-11"	2'-1"	2'-4"
5	1'-9"	2'-5"	2'-7"	2'-11"
6	2'-1"	2'-11"	3'-1"	3'-6"
7	2'-9"	3'-10"	4'-2"	4'-8"
8	3'-8"	5'-1"	5'-5"	6'-2"
9	4'-7"	6'-5"	6'-10"	7'-9"

Table 1: Black bar, 0.8 Class C  
Table 2: Black bar, Top bar lap, 0.8 Class C  
Table 3: Epoxy bar, 0.8 Class C  
Table 4: Epoxy bar, Top bar lap, 0.8 Class C

Threaded splicer bar length = min. lap length + 1/2" + thread length

\* Epoxy not required on Bar Splicer Assembly components used in conjunction with black bars.

Location	Bar size	No. assemblies required	Table for minimum lap length
Deck	#5	533	Table 3
Abut. Diaphragm	#6	16	Table 3
Pier Diaphragm	#4	12	Table 3
Pier Diaphragm	#6	4	Table 3
Appr. Slab	#4	50	Table 3
Appr. Slab	#5	170	Table 3
West Abut.	#7	12	Table 4
East Abut.	#7	12	Table 4
Pier 1	#7	14	Table 4
Pier 1	#6	44	Table 3
Pier 2	#7	14	Table 4
Pier 2	#6	38	Table 3



BAR SPLICER ASSEMBLY FOR #5 BAR ON  
INTEGRAL OR SEMI-INTEGRAL ABUTMENTS

No. required = 72

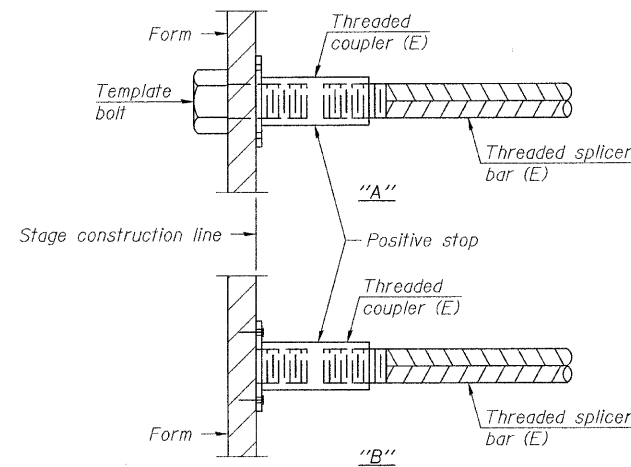
DESIGNED SCD
CHECKED DRB
DRAWN THW
CHECKED SCD



IE CONSULTANTS, INC.  
6420 SOUTH SIXTH STREET  
SPRINGFIELD, ILLINOIS 62712  
TEL. (217) 529-8027  
FAX (217) 529-4543  
IESPRINGFIELD@IE-CONSULTANTS.COM  
WWW.IE-CONSULTANTS.COM

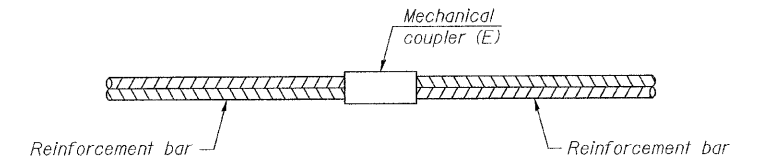
BSD-1

11-1-09



INSTALLATION AND SETTING METHODS

"A" : Set bar splicer assembly by means of a template bolt.  
"B" : Set bar splicer assembly by nailing to wood forms or cementing to steel forms.  
(E) : Indicates epoxy coating.



STANDARD MECHANICAL SPLICER

Location	Bar size	No. assemblies required
Pier 1	#6	90
Pier 2	#6	90
Total		180

NOTES

Splicer bars shall be deformed with threaded ends and have a minimum 60 ksi yield strength.  
All reinforcement shall be lapped and tied to the splicer bars.  
Bar splicer assemblies shall be epoxy coated according to the requirements for reinforcement bars. See Section 508 of the Standard Specifications.  
See special provision for Mechanical Splicers.  
See approved list of bar splicer assemblies and mechanical splicers for alternatives.

BAR SPLICER ASSEMBLY AND  
MECHANICAL SPLICER DETAILS  
STRUCTURE NO. 012-0073

SHEET NO.	F.A.S. RTE.	SECTION	COUNTY	TOTAL SHEETS	SHEET NO.
26 OF 29 SHEETS	1707	(BX-B)B-1	CLARK	44	35
CONTRACT NO. 74169					
FED. ROAD DIST. NO. _ ILLINOIS FED. AID PROJECT					