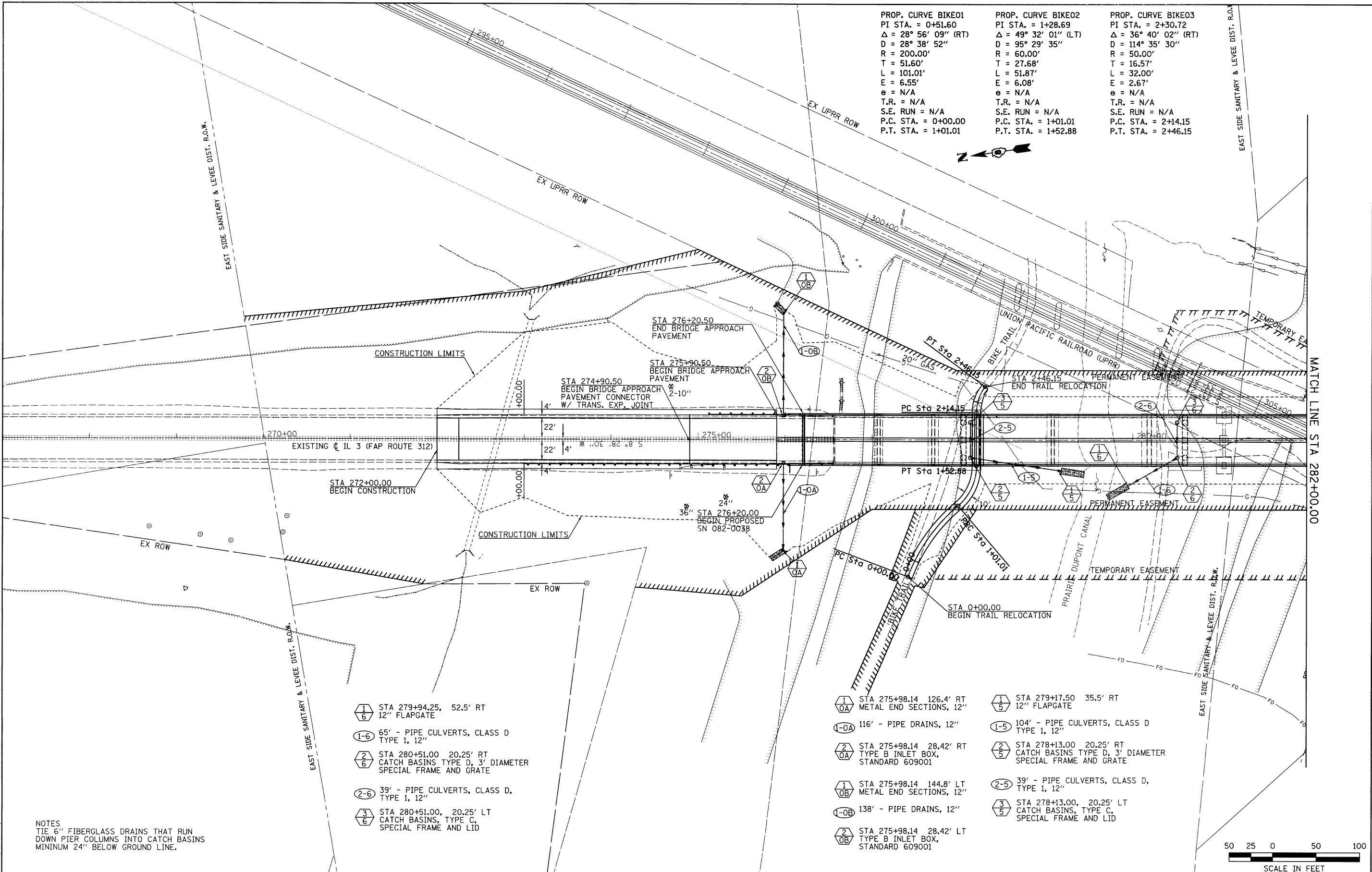


PROP. CURVE BIKE01	PROP. CURVE BIKE02	PROP. CURVE BIKE03
PI STA. = 0+51.60	PI STA. = 1+28.69	PI STA. = 2+30.72
$\Delta = 28^\circ 56' 09''$ (RT)	$\Delta = 49^\circ 32' 01''$ (LT)	$\Delta = 36^\circ 40' 02''$ (RT)
D = 28° 38' 52"	D = 95° 29' 35"	D = 114° 35' 30"
R = 200.00'	R = 60.00'	R = 50.00'
T = 51.60'	T = 27.68'	T = 16.57'
L = 101.01'	L = 51.87'	L = 32.00'
E = 6.55'	E = 6.08'	E = 2.67'
e = N/A	e = N/A	e = N/A
T.R. = N/A	T.R. = N/A	T.R. = N/A
S.E. RUN = N/A	S.E. RUN = N/A	S.E. RUN = N/A
P.C. STA. = 0+00.00	P.C. STA. = 1+01.01	P.C. STA. = 2+14.15
P.T. STA. = 1+01.01	P.T. STA. = 1+52.88	P.T. STA. = 2+46.15



- 1/6 STA 279+94.25, 52.5' RT 12" FLAPGATE
- 1-6 65' - PIPE CULVERTS, CLASS D TYPE 1, 12"
- 2/6 STA 280+51.00 20.25' RT CATCH BASINS TYPE D, 3' DIAMETER SPECIAL FRAME AND GRATE
- 2-6 39' - PIPE CULVERTS, CLASS D, TYPE 1, 12"
- 3/6 STA 280+51.00, 20.25' LT CATCH BASINS, TYPE C, SPECIAL FRAME AND LID

- 1/5 STA 275+98.14 126.4' RT METAL END SECTIONS, 12"
- 1-5 116' - PIPE DRAINS, 12"
- 2/5 STA 275+98.14 28.42' RT TYPE B INLET BOX, STANDARD 609001
- 1/5 STA 275+98.14 144.8' LT METAL END SECTIONS, 12"
- 1-5B 138' - PIPE DRAINS, 12"
- 2/5B STA 275+98.14 28.42' LT TYPE B INLET BOX, STANDARD 609001
- 1/5 STA 279+17.50 35.5' RT 12" FLAPGATE
- 1-5 104' - PIPE CULVERTS, CLASS D TYPE 1, 12"
- 2/5 STA 278+13.00 20.25' RT CATCH BASINS TYPE D, 3' DIAMETER SPECIAL FRAME AND GRATE
- 2-5 39' - PIPE CULVERTS, CLASS D, TYPE 1, 12"
- 3/5 STA 278+13.00, 20.25' LT CATCH BASINS, TYPE C, SPECIAL FRAME AND LID

NOTES
TIE 6" FIBERGLASS DRAINS THAT RUN DOWN PIER COLUMNS INTO CATCH BASINS MINIMUM 24" BELOW GROUND LINE.



LAST SAVED = 8/23/2010
 PEN TABLE = V8.tbl
 PLOT DRIVER = TR-V8pdf.plt

FILE NAME =	USER NAME = beriechmann	DESIGNED -	REVISED -
h:\07078\Cad\TV_Plans\007-0876882-Sht-P	an-IL3-01.dgn	DRAWN -	REVISED -
		CHECKED -	REVISED -
		DATE -	REVISED -

STATE OF ILLINOIS
DEPARTMENT OF TRANSPORTATION



IL 3 PLAN
 SCALE: 1" = 50'
 SHEET NO. 1 OF 2 SHEETS
 STA. 268+00.00 TO STA. 282+00.00

F.A.P. RTE.	SECTION	COUNTY	TOTAL SHEETS	SHEET NO.
312	64-1VBR	ST. CLAIR	259	18
CONTRACT NO. 76882				
FED. ROAD DIST. NO. ILLINOIS FED. AID PROJECT				