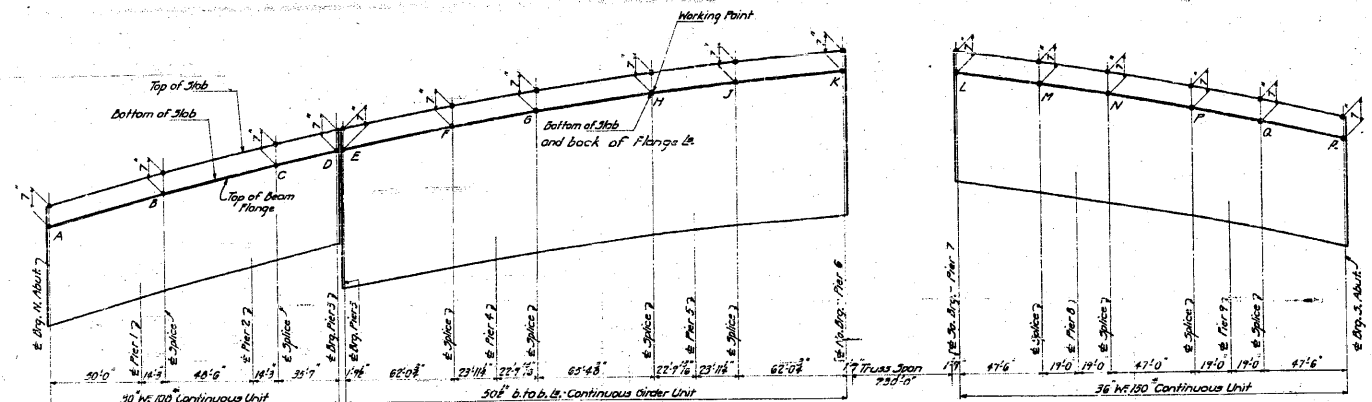


STATE OF ILLINOIS  
DEPARTMENT OF PUBLIC WORKS & BUILDINGS  
DIVISION OF HIGHWAYS

SECTION	COUNTY	TOTAL SHEETS	SHEET NO.
64-1VBR	ST. CLAIR	259	102
SHEET NO. 2		30 SHEETS	



SKETCH SHOWING WORKING POINTS OF BEAMS & GIRDERS  
Note: Bottom of Slab and tops of Beams and Girders to be flush at Working Points

TOP OF BEAM ELEVATIONS AT WORKING POINTS

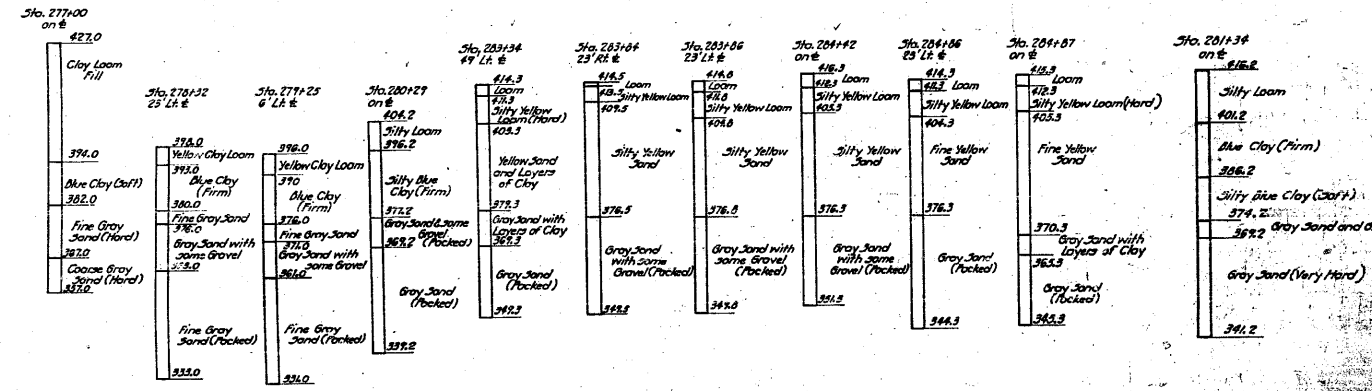
BEAM NO.	WORKING POINTS																
	A	B	C	D	E	F	G	H	J	K	L	M	N	P	Q	R	
1 C.10	445.24	446.61	447.79	448.29	448.92	449.33	449.72	450.27	451.34	451.34	451.07	450.79	450.37	449.52	449.37		
2 C.9	445.30	446.66	447.84	448.34	448.97	449.38	449.77	450.63	451.03	451.37	451.37	451.12	450.65	450.42	450.01	449.42	
3 C.8	445.35	446.72	447.89	448.39	449.02	449.43	449.82	450.70	451.08	451.44	451.44	451.18	450.70	450.47	450.07	449.48	
4 C.7	445.40	446.77	447.94	448.44	449.07	449.48	449.87	450.75	451.13	451.50	451.50	451.23	450.75	450.52	450.12	449.53	
5 C.6	445.45	446.82	447.99	448.49	449.12	449.53	449.92	450.80	451.18	451.54	451.54	451.28	450.80	450.57	450.17	449.58	

Note: Elevations given are those before D.I. or L.L. deflection takes place.

MQ. PAC. R.R.  
BUILT 195 BY  
STATE OF ILLINOIS  
F.A. RT. 4 - SEC. 64-1-VB-VD-VE-VF  
STA. 281+07.19  
LOADING H-20

NAME PLATE DETAIL  
See Standard 2113

To be furnished and placed on the concrete and post at a location directed by the Engineer - (Section 64-118)



BORINGS

Borings are given only as a guide to diabases in estimating soil conditions which may be encountered in the work.

Note: See Sheet #28 for additional borings

COMPUTED	W. F. Willy	EXAMINED	B-10 12.54
CHECKED	W. F. Sommer	DESIGNED	W. F. Hanson
DRAWN	W. F. W. Miller	CHECKED	W. F. W. Miller
CHECKED	2/17/68	APPROVED	R. B. Bartelme
SPECIAL ASSEMBLED			
CHECKED			

BAR SIZES SHOWN	4#	5#	6#	7#	8#	10#	11#	12#	14#
BAR NUMBER FOR SIZE ABOVE	4	5	6	7	8	9	10	11	

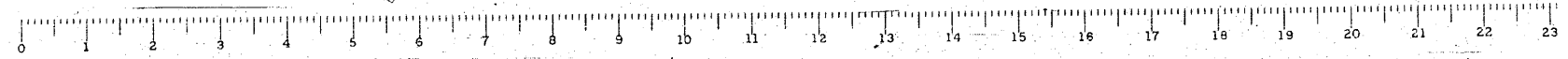
SUMMARY OF QUANTITIES

ITEM	SECTION K.B.	SECTION V.D.	SECTION V.F.	SECTION V.E.
Class-X Concrete	Cu. Yds. 1797.3	1241.5		
Reinforcement Bars	Lbs. 233920	873810		
Structural Steel Carbon	Lbs.		1811280	1811280
Structural Steel A36 (Low Alloy)	Lbs.		509800	509800
12" Metal Shell Piles	Lin. Ft. 13639			
14" Metal Shell Piles	Lin. Ft. 5860			
Structural Steel	Lbs. 920			
12" Metal Shell Test Piles	Each	3		
14" Metal Shell Test Piles	Each	4		
Cast Iron Frames	Each		10	
Name Plate	Each	1		
Corrugated Metal Pipe-6"	Lin. Ft.		500	
Borrow Excavation	Cu. Yds.	55140		
Class A Excavation for Structures	Cu. Yds.	2080		

GENERAL NOTES

**SECTION 64-1VBR**  
Class-X Concrete to be used throughout. Before the superstructure is placed the Contractor for Section 64-1VBR shall construct the embankments as shown on sheets 64-1V in accordance with Sec. 64 of the Standard Specifications. Mechanical connection shall be used. Reinforcement bars shall conform to ASTM A-305-A. Metal shell test piles shall be driven in a progressive fashion at 100' intervals. The contractor shall be responsible for the design and construction of the piles. Anchor bolts, gusset and anchor plate for the piles shall be furnished by the Contractor for Section 64-1VBR. All main truss connections shall be furnished to the Contractor for Section 64-1VBR. Piles shall be driven in a progressive fashion at 100' intervals. The contractor shall be responsible for the design and construction of the piles. Anchor bolts, gusset and anchor plate for the piles shall be furnished by the Contractor for Section 64-1VBR. All main truss connections shall be furnished to the Contractor for Section 64-1VBR. Piles shall be driven in a progressive fashion at 100' intervals. The contractor shall be responsible for the design and construction of the piles. Anchor bolts, gusset and anchor plate for the piles shall be furnished by the Contractor for Section 64-1VBR. All main truss connections shall be furnished to the Contractor for Section 64-1VBR.

GRADE SEPARATION  
MICHIGAN PACIFIC R.R.  
NORTH OF DUPO  
F.A. ROUTE 4 - SEC. 64-1-VB-VF  
ST. CLAIR COUNTY



FOR INFORMATION ONLY

FILE NAME =	USER NAME = CFC..	DESIGNED -	REVISIONS -	STATE OF ILLINOIS DEPARTMENT OF TRANSPORTATION	SN 082-0030 PLANS (ORIGINAL PLANS)	F.A.P. RTE. 312	SECTION 64-1VBR	COUNTY ST. CLAIR	TOTAL SHEETS 259	SHEET NO. 102
... \182-0876882-exist-bridge-plans-02.dgn		DRAWN -	REVISIONS -							
		CHECKED -	REVISIONS -							
		DATE - / /	REVISIONS -							
CB JOB NO 09821	PLOT SCALE = 40.000000' / IN.					SCALE:	SHEET NO. OF SHEETS	STA. TO STA.	CONTRACT NO. 76882	
	PLOT DATE = 6/5/2010								[ILLINOIS] FED. AID PROJECT	

**CB** Coombe-Bloxdorf P.C.  
- CIVIL ENGINEERS -  
- STRUCTURAL ENGINEERS -  
- LAND SURVEYORS -  
Design Firm License No. 184-002703