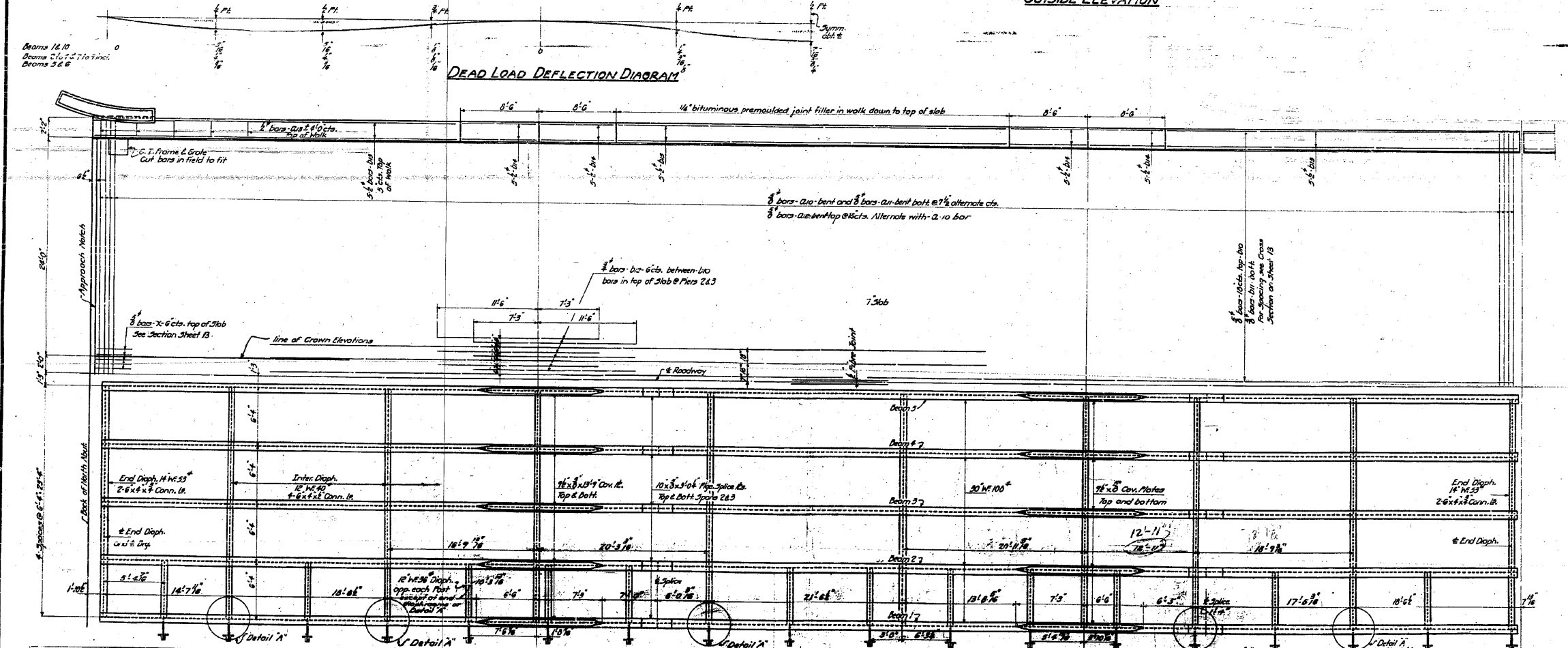
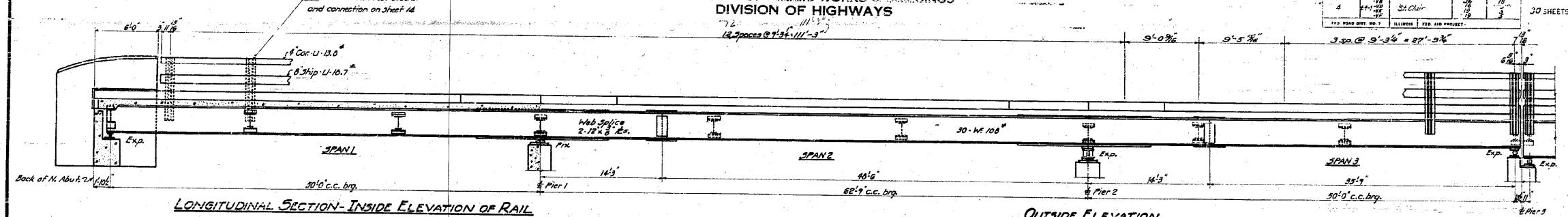


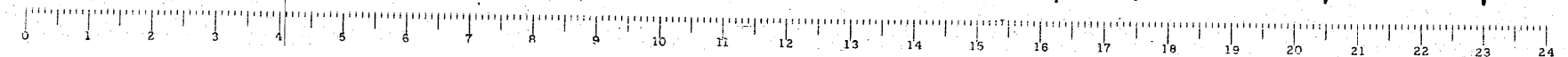
STATE OF ILLINOIS
DEPARTMENT OF PUBLIC WORKS & BUILDINGS
DIVISION OF HIGHWAYS

| DATE | BY | SECTION | COUNTY | TOTAL SHEETS | SHEET NO. |
|------|----------|---------|-----------|--------------|-----------|
| 4 | W. J. W. | 64-1VBR | ST. CLAIR | 259 | 103 |
| | | | | | 30 SHEETS |



| | | |
|-----------|----------|---|
| STANDARD | COMPUTED | EXAMINED |
| CHECKED | W. J. W. | B-10 1954 |
| DRAWN | W. J. W. | W. B. Hanson |
| CHECKED | J. H. S. | MEMBER OF BRIDGE AND TRAFFIC STRUCTURES |
| ASSEMBLED | | PASSED |
| CHECKED | | APPROVED |
| | | P. R. Benthley |

SPANS 1-2-3
GRADE SEPARATION
MISSOURI PACIFIC R.R.
NORTH BRIDGE
E.A. ROUTE 4 - SEC. 64-1VBR
ST. CLAIR COUNTY



FOR INFORMATION ONLY

| | | | | | | | | | | | |
|--|-------------------------------|------------|-----------|---|---------------------------------------|--------|----------------------------------|---------------|---------|--------|--------------------|
| FILE NAME = | USER NAME = CFC.. | DESIGNED - | REVISED - | STATE OF ILLINOIS DEPARTMENT OF TRANSPORTATION | SN 082-0030 PLANS (ORIGINAL PLANS) | SCALE: | SHEET NO. OF SHEETS STA. TO STA. | F.A.P. R.T.E. | SECTION | COUNTY | TOTAL SHEET NO. |
| ...183-D876882-exist-bridge-plans-03.dgn | PLOT SCALE = 40.000000' / IN. | DRAWN - | REVISED - | | | | | | | | 259 |
| CB JOB NO 09021 | PLOT DATE = 8/5/2010 | CHECKED - | REVISED - | | | | | | | | 103 |
| | | DATE - / / | REVISED - | | | | | | | | CONTRACT NO. 76882 |

CB Coombe-Bloxdorf P.C.
- CIVIL ENGINEERS -
- STRUCTURAL ENGINEERS -
- LAND SURVEYORS -
Design Firm License No. 184-002703