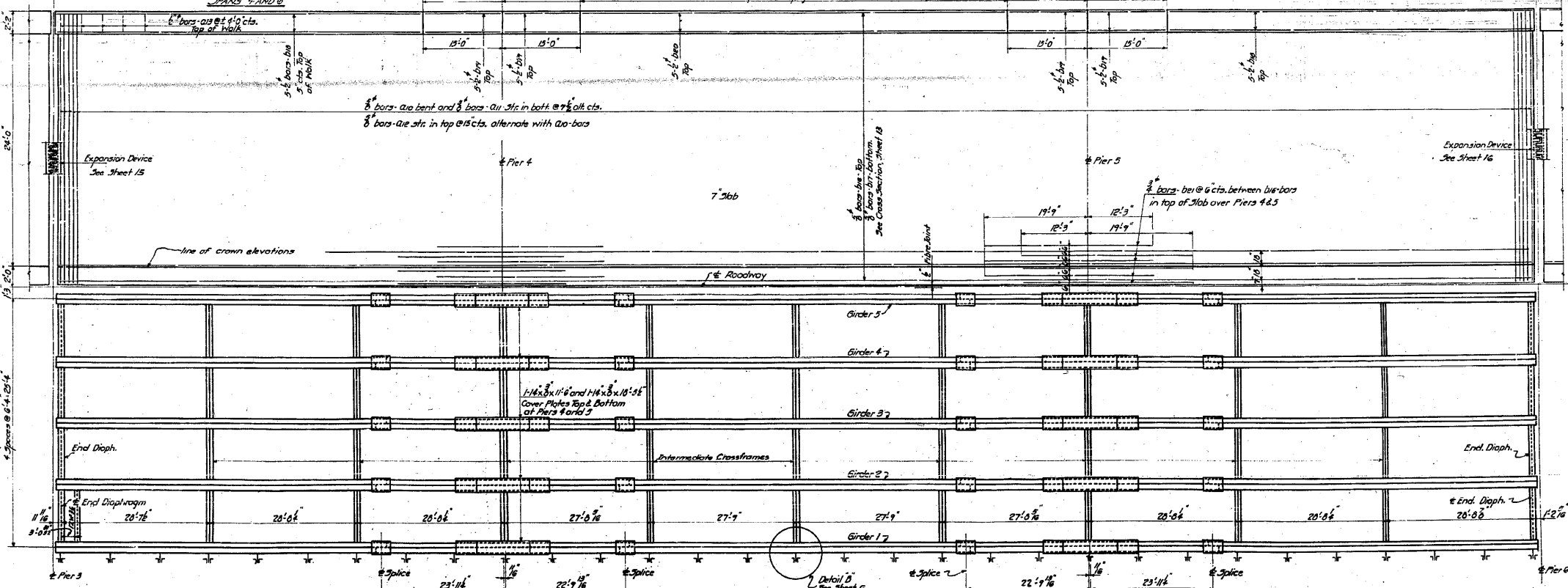
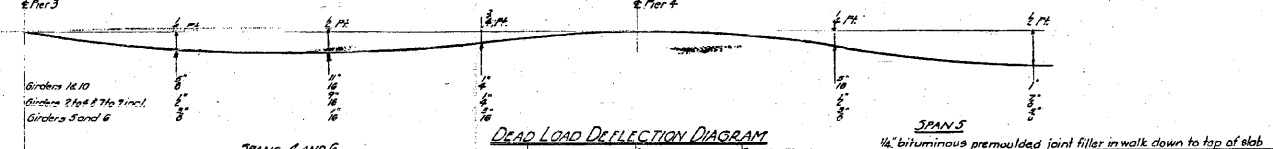
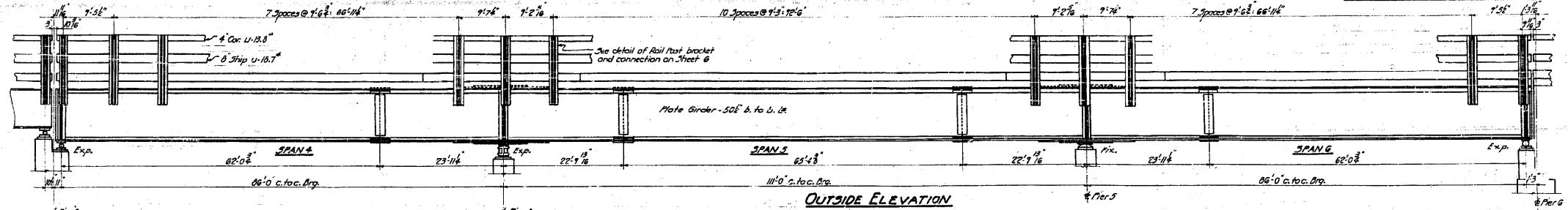
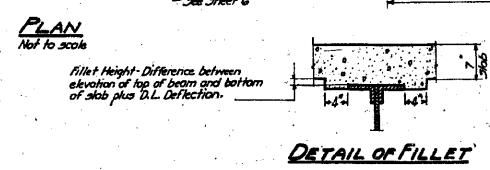


STATE OF ILLINOIS
DEPARTMENT OF PUBLIC WORKS & BUILDINGS
DIVISION OF HIGHWAYS

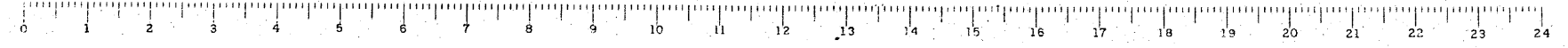
ROAD DISTRICT NO.	SECTION	COUNTY	TOTAL SHEETS	SHEET NO.
4	64-1VBR	ST. CLAIR	259	104
FED. ROAD DIST. NO. 7	ILLINOIS	FED. AID PROJECT		



STANDARD	COMPUTED <i>W.F. Wilkey</i>	EXAMINED <i>B-10 10-5-1</i>
	CHECKED <i>W.H. Sommer</i>	ENGINEER OF BRIDGE AND TRAFFIC STRUCTURES <i>W.E. Hanson</i>
	DRAWN <i>W.F.W. Miller</i>	PASSED <i>[Signature]</i>
	CHECKED <i>W.M.</i>	APPROVED <i>R.L. [Signature]</i>
SPECIAL	ASSEMBLED	
	CHECKED	



SPANS 4-5&6
GRADE SEPARATION
MISSOURI PACIFIC R.R.
NORTH OF DUPO
E.A. ROUTE 4 - SEC. 64-1-VBR
ST. CLAIR COUNTY



FOR INFORMATION ONLY

FILE NAME =	USER NAME = CFC..	DESIGNED -	REVISED -
...184-0876882-exist-bridge-plans-04.dgn		DRAWN -	REVISED -
	PLOT SCALE = 48.000000' / IN.	CHECKED -	REVISED -
CB JOB NO 09021	PLOT DATE = 8/5/2010	DATE - / /	REVISED -

STATE OF ILLINOIS
DEPARTMENT OF TRANSPORTATION

SN 082-0030 PLANS (ORIGINAL PLANS)			
SCALE:	SHEET NO.	OF SHEETS	STA. TO STA.

CB Coombe-Bloxdorf P.C.
- CIVIL ENGINEERS-
- STRUCTURAL ENGINEERS-
- LAND SURVEYORS-
Design Firm License No. 184-002703

F.A.P. RTE.	SECTION	COUNTY	TOTAL SHEETS	SHEET NO.
312	64-1VBR	ST. CLAIR	259	104
			CONTRACT NO. 76882	

ILLINOIS FED. AID PROJECT