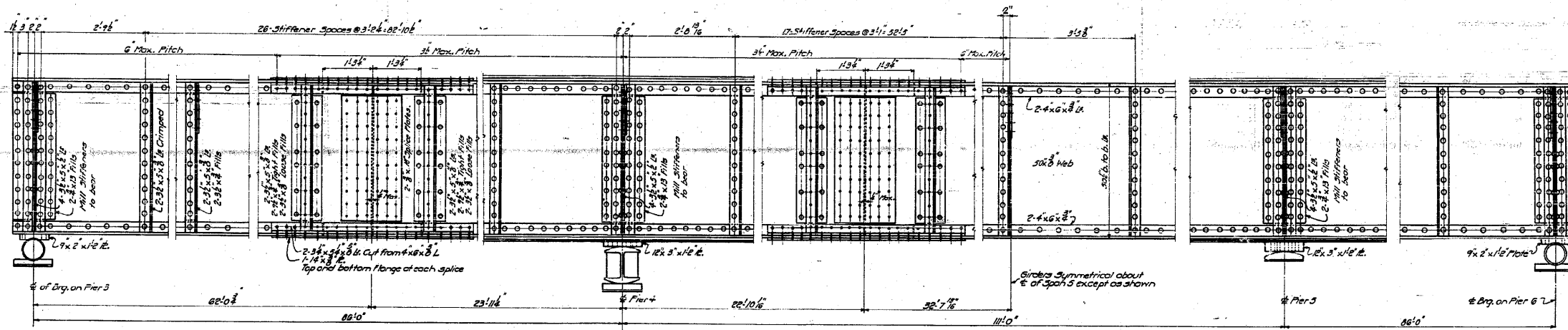
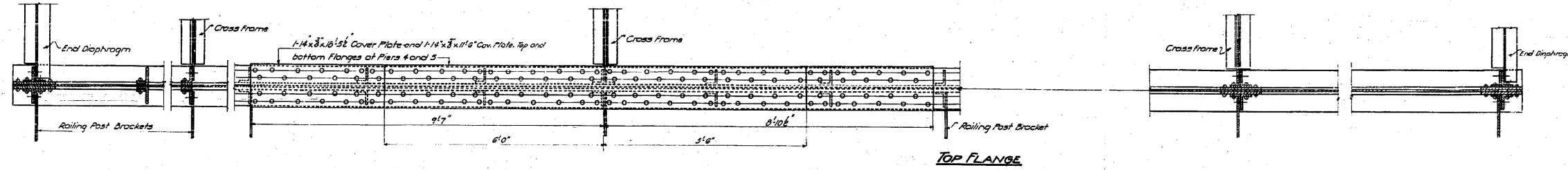


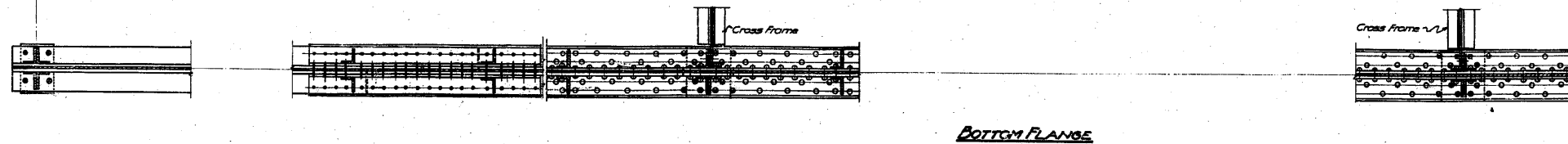
STATE OF ILLINOIS  
DEPARTMENT OF PUBLIC WORKS & BUILDINGS  
DIVISION OF HIGHWAYS

SECTION NO.	SECTION	COUNTY	TOTAL SHEETS	SHEET NO.	SHEET NO.
4	64-1VBR	ST. CLAIR	10	10	2
FED. ROAD DIST. NO. 1			ILLINOIS FED. AID PROJECT		



OUTSIDE ELEVATION OF GIRDER I

Other Girders Similar  
Longitudinal dimensions shown are horizontal distances



STANDARD	COMPUTED	W.J. Wilby	EXAMINED	B-10	10-54	
	CHECKED	W.J. Wilby		W.E. Roman		
	DRAWN	W.J. Wilby		ENGINEER OF BRIDGE AND TRAFFIC STRUCTURES		
	CHECKED	W.J. Wilby		PASSED	[Signature]	
SPECIAL	ASSEMBLED		APPROVED	R.C. Bastian		
	CHECKED		[Signature]			

PLATE GIRDER SPANS 4-5&6  
GRADE SEPARATION  
MISSOURI PACIFIC R.R.  
NORTH OF DUPO  
F.A. ROUTE 4 ~ SEC. 64-1V.E.F.  
ST. CLAIR COUNTY

FOR INFORMATION ONLY

FILE NAME = ...105-0876882-exist-bridge-plans-05.dgn  
CB JOB NO 09021

USER NAME = CFC..	DESIGNED -	REVISED -
PLOT SCALE = 40.000000' / IN.	DRAWN -	REVISED -
PLOT DATE = 8/5/2010	CHECKED -	REVISED -
	DATE - / /	REVISED -

STATE OF ILLINOIS  
DEPARTMENT OF TRANSPORTATION

SN 082-0030 PLANS  
(ORIGINAL PLANS)

SCALE: SHEET NO. OF SHEETS STA. TO STA.

**CB** Coombe-Bloxdorf P.C.  
- CIVIL ENGINEERS -  
- STRUCTURAL ENGINEERS -  
- LAND SURVEYORS -  
Design Firm License No. 184-002703

F.A.P. RTE.	SECTION	COUNTY	TOTAL SHEETS	SHEET NO.
312	64-1VBR	ST. CLAIR	259	105
CONTRACT NO. 76882				
ILLINOIS FED. AID PROJECT				