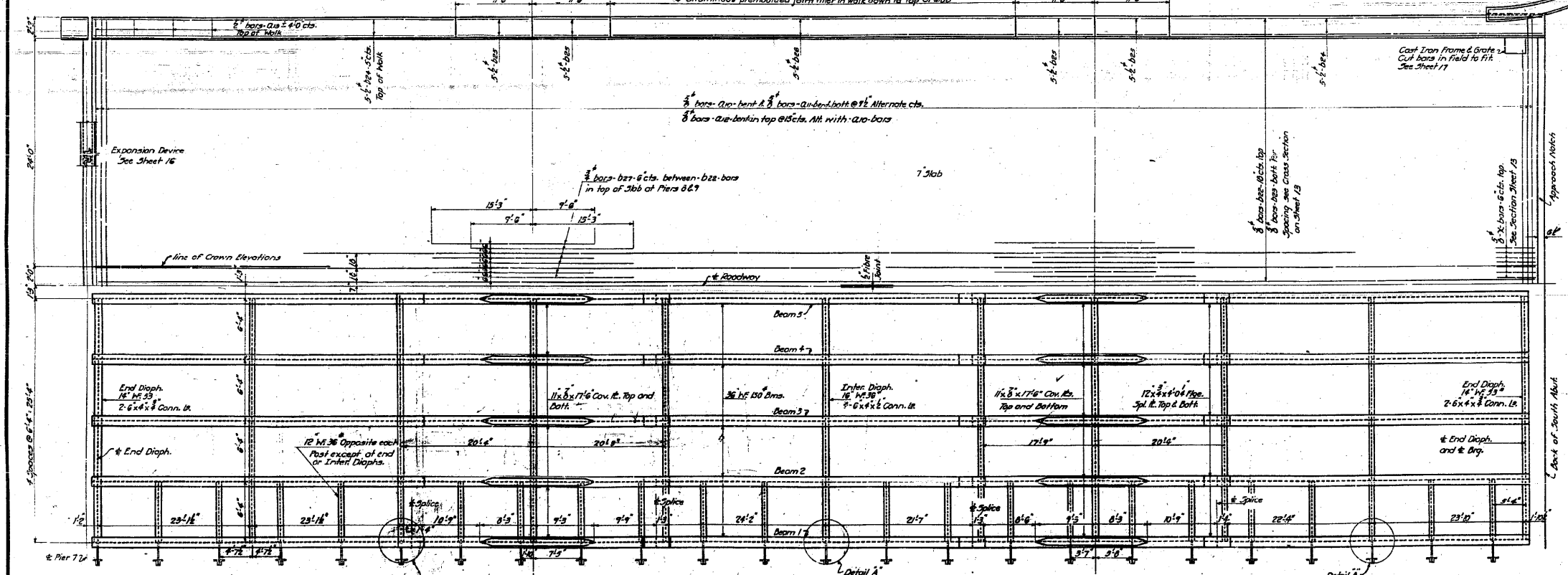
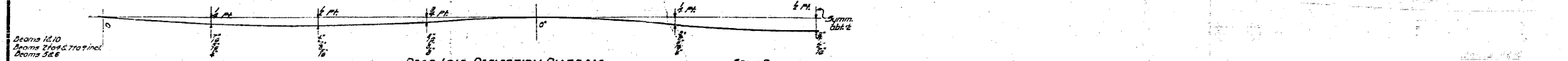
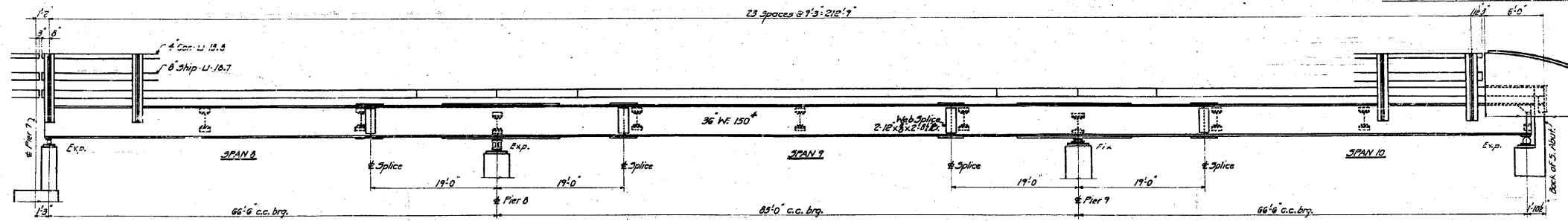


STATE OF ILLINOIS
DEPARTMENT OF PUBLIC WORKS & BUILDINGS
DIVISION OF HIGHWAYS

SHEET NO.	SECTION	COUNTY	TOTAL SHEETS	SHEET NO.
12	64-1VBR	ST. CLAIR	259	112
11	64-1VBR	ST. CLAIR	259	112
10	64-1VBR	ST. CLAIR	259	112
9	64-1VBR	ST. CLAIR	259	112
8	64-1VBR	ST. CLAIR	259	112



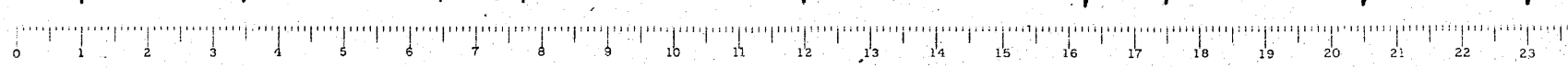
STANDARD
COMPUTED W.F. Wilby
CHECKED W.F. Zimmerman
DRAWN W.F. Wilby M. Miller
CHECKED W.F. Wilby

SPECIAL
ASSEMBLED
CHECKED

EXAMINED B-10 1956
W.E. Hansen
ENGINEER OF BRIDGES AND TRAFFIC STRUCTURES
PASSED
[Signature]
APPROVED R.L. Bartlett
SUPERVISOR OF BRIDGES

Note:
For details of base R.O. on Pier 8 and 9 see Sheet 11
For Bill of Material see Sheet 17
For detail 'A' see Sheet 14

SPANS 8-9-10
GRADE SEPARATION
MISSOURI PACIFIC R.R.
NORTH OF DUPE
I.A. ROUTE 4 - SEC. 64-1VBR
ST. CLAIR COUNTY



FOR INFORMATION ONLY

FILE NAME = ...112-0876882-exst-bridge-plans-12.dgn	USER NAME = cfc...	DESIGNED -	REVISIONS -	STATE OF ILLINOIS DEPARTMENT OF TRANSPORTATION	SN 082-0030 PLANS (ORIGINAL PLANS)	SCALE: SHEET NO. OF SHEETS STA. TO STA.	F.A.P. R.T.E. SECTION COUNTY TOTAL SHEETS SHEET NO.
PLOT SCALE = 40.000000 ' / IN.	PLOT DATE = 8/5/2010	DRAWN -	REVISIONS -				312 64-1VBR ST. CLAIR 259 112
		CHECKED -	REVISIONS -				CONTRACT NO. 76882
		DATE - / /	REVISIONS -				ILLINOIS FED. AID PROJECT

Coombe-Bloxdorf P.C.
- CIVIL ENGINEERS -
- STRUCTURAL ENGINEERS -
- LAND SURVEYORS -
Design Firm License No. 184-002703