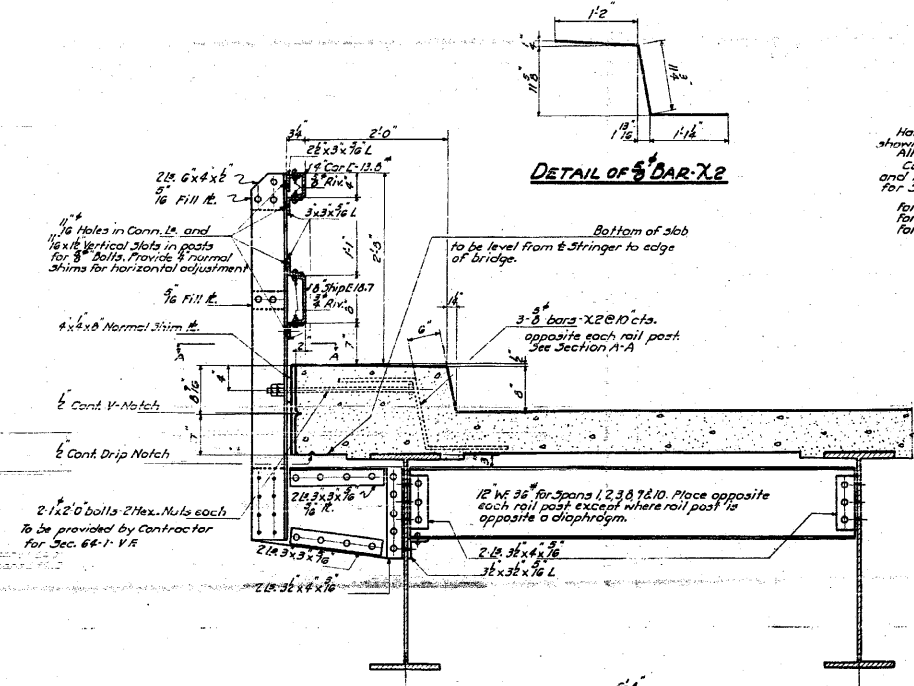


STATE OF ILLINOIS
DEPARTMENT OF PUBLIC WORKS & BUILDINGS
DIVISION OF HIGHWAYS

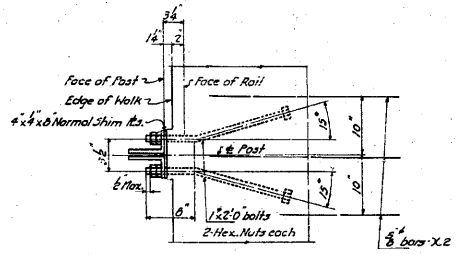
ROAD DISTRICT NO.	SECTION	COUNTY	TOTAL SHEETS	SHEET NO.
64-1-10	St. Clair	St. Clair	75	14
PER. ROAD DIST. NO. 1	ILLINOIS	PER. ROAD DIST. NO. 1	15	14

SHEET NO. 14
30 SHEETS

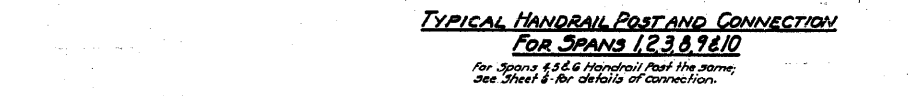


DETAIL OF BAR-X2

NOTE
Handrail Posts shall be fabricated so that the rail dimensions shown can be maintained at all posts.
All posts shall be truly vertical.
Contractor for Sec. 64-1-V.E. shall align, assemble and rivet handrail posts and brackets, Contractor for Sec. 64-1-V.D. shall secure posts to anchor bolts.
For location and spacing of Handrail Posts see Sheets 5, 6 & 7.
For detail of end diaphragm of Pier 7, see Sheet 16.
For detail of end diaphragm of Pier 3, see Sheet 15.

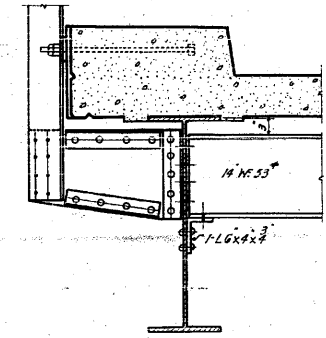


SECTION A-A

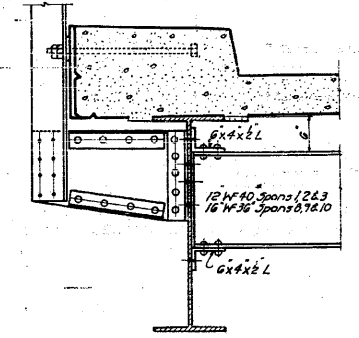


TYPICAL HANDRAIL POST AND CONNECTION FOR SPANS 1, 2, 3, 6, 7 & 10

For Spans 6, 7 & 10 Handrail Post the same, see Sheet 8 for details of connection.

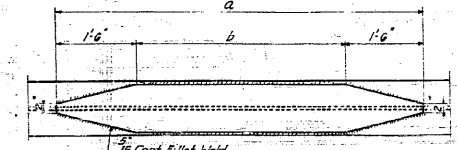


CONNECTION AT END DIAPHRAGMS SPAN 3 AT PIER 3 AND SPAN 6 AT PIER 7



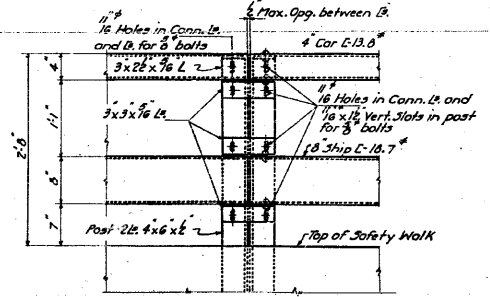
DETAIL A CONNECTION AT INTERMEDIATE DIAPHRAGMS

All Points noted Detail A on Plans For Spans 1, 2, 3, 6, 7 & 10

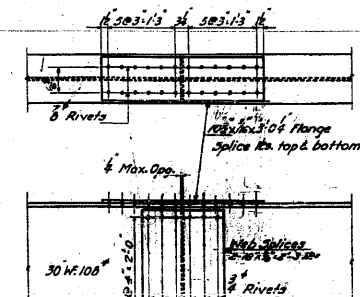


Pier No.	Width	Thickness	a	b
1, 2, 3	9'6"	3"	13'9"	10'9"
6, 7	11'	3"	17'6"	14'6"

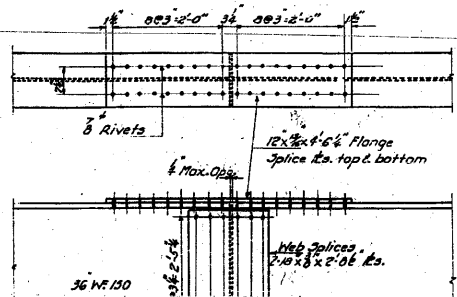
DETAIL OF COVER PLATES
Spans 1, 2, 3 & 6, 7 & 10



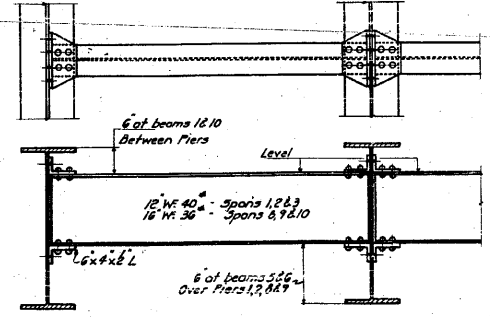
ROADWAY FACE ELEVATION OF RAIL SHOWING SPICINGS OF CHANNELS



BEAM SPICES FOR SPANS 2 & 3



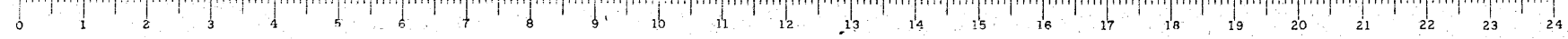
BEAM SPICES FOR SPANS 6, 7 & 10



DETAILS OF INTERMEDIATE DIAPHRAGMS
For I-beam Spans

COMPUTED	W. J. Wiles	EXAMINED	8-10 1954
CHECKED	W. J. Wiles	DESIGNED	W. E. Hanson
DRAWN	W. J. Wiles	ENGINEER OF BRIDGE AND TRAFFIC STRUCTURES	
CHECKED	W. J. Wiles	PASSED	
SPECIAL		APPROVED	R. R. B... ..

DECK DETAILS
GRADE SEPARATION
MISSOURI PACIFIC R.R.
NORTH OF DUPO
F.A. ROUTE 4 - SEC. 64-1-V.D.E.F.
ST. CLAIR COUNTY



FOR INFORMATION ONLY

FILE NAME =	USER NAME = CFC..	DESIGNED -	REVISED -
...N14-D876882-exist-bridge-plans-14.dgn		DRAWN -	REVISED -
		CHECKED -	REVISED -
		DATE - / /	REVISED -

STATE OF ILLINOIS
DEPARTMENT OF TRANSPORTATION

SCALE:	SHEET NO.	OF	SHEETS	STA.	TO STA.

SN 082-0030 PLANS
(ORIGINAL PLANS)

CB Coombe-Bloxdorf P.C.
- CIVIL ENGINEERS -
- STRUCTURAL ENGINEERS -
- LAND SURVEYORS -
Design Firm License No. 184-002703

F.A.P. RTE.	SECTION	COUNTY	TOTAL SHEETS	SHEET NO.
312	64-1VBR	ST. CLAIR	259	114

CONTRACT NO. 76882
ILLINOIS FED. AID PROJECT