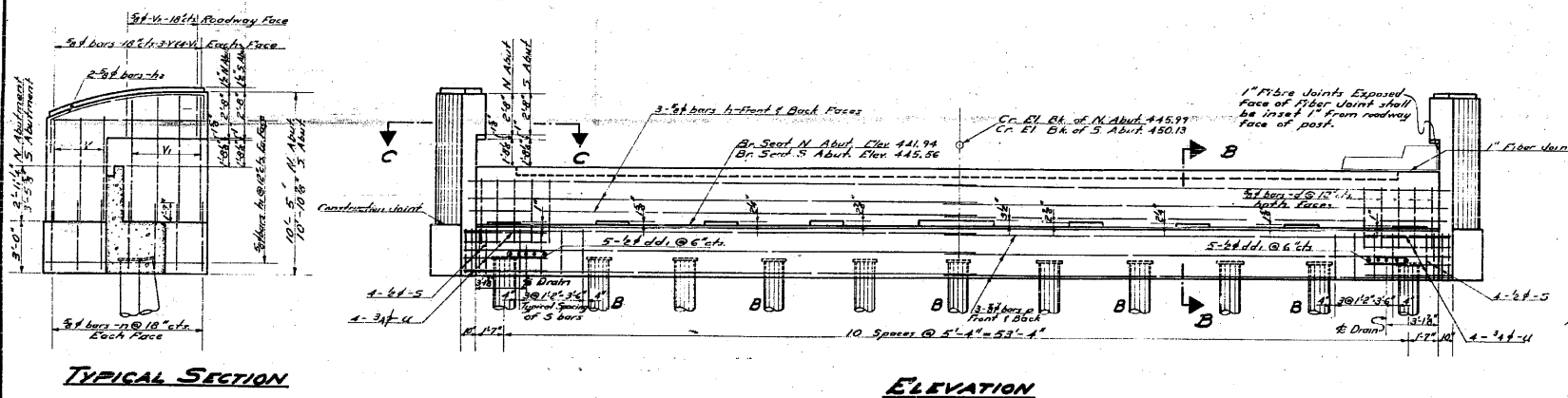
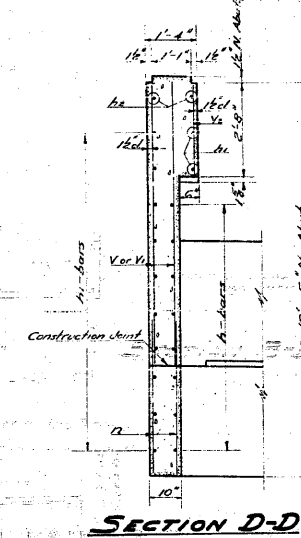
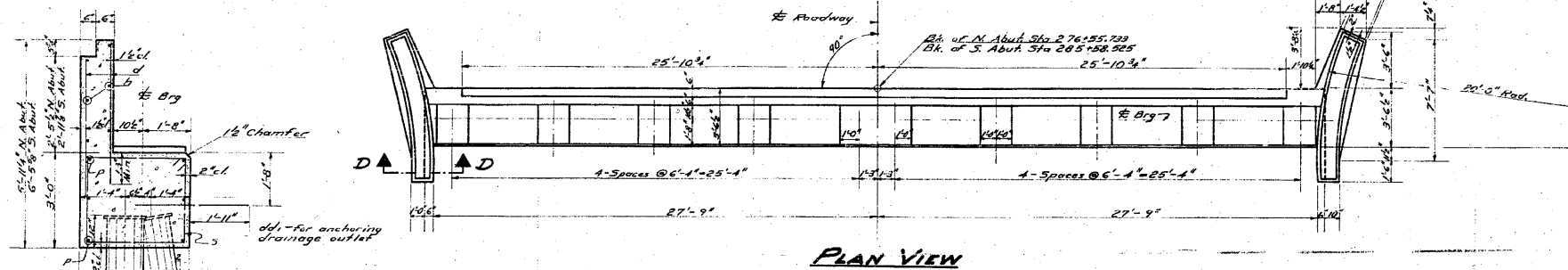
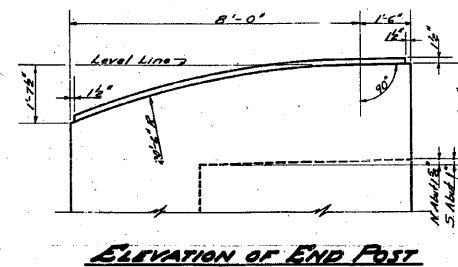
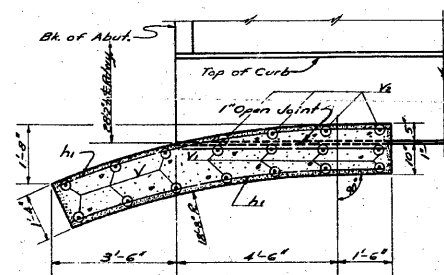
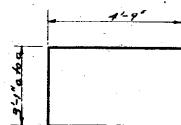
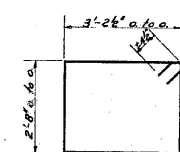


STATE OF ILLINOIS
DEPARTMENT OF PUBLIC WORKS & BUILDINGS
DIVISION OF HIGHWAYS

ROUTE NO.	SECTION	COUNTY	TOTAL SHEETS	SHEET NO.
64-1-VB	St. Clair	St. Clair	30	26
SHEET NO. 20 30 SHEETS				



TYPICAL SECTION



BILL OF MATERIAL - 2 ABUTS.

BAR	NO	SIZE	LENGTH	SHAPE
h	24	3/8"	29'-0"	
h1	72	3/8"	9'-0"	
h2	8	3/8"	12'-0"	
v	24	3/8"	6'-0"	
v1	32	3/8"	7'-0"	
v2	16	3/8"	2'-3"	
d	228	3/8"	4'-3"	
dd1	20	3/8"	3'-9"	
p	24	3/8"	29'-9"	
u	16	3/8"	12'-7"	
w	56	3/8"	4'-6"	
5	96	3/8"	12'-6"	

Note:
N. Abut. 14" #7 Gauge Metal Shell Pile Capacity 35 Ton Length 65'-0"
10 - Pgs of 1-Test Piles
S. Abut. 14" #7 Gauge Metal Shell Piles Capacity 35 Ton Length 65'-0"
10 - Pgs of 1-Test Piles

Class X Concrete Cu Yds. 72.7
Reinforcement Bars Lbs. 5820
14" Metal Shell Piles Lin Ft. 1300
14" Metal Shell Test Piles Ea. 2
Class A Excavation for Structures Cu Yds. 75.0

ABUTMENTS

GRADE SEPARATION
MISSOURI PACIFIC R.R.
NORTH OF DUPO

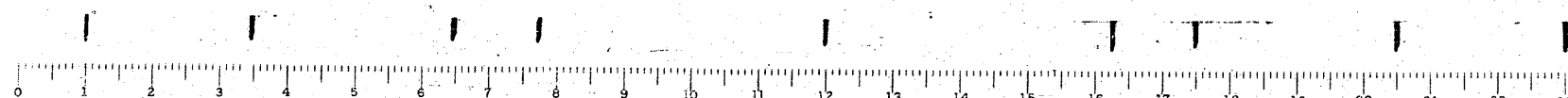
F.A. RT. 4 SECTION 64-1-VB
ST. CLAIR COUNTY

DESIGNED <i>Fugent M. Schick</i>	EXAMINED <i>W.E. Hanson</i>
CHECKED <i>W.H. Sommer</i>	PASSED <i>[Signature]</i>
DRAWN <i>F.M. A. R.V. C. Hoff</i>	APPROVED <i>[Signature]</i>
CHECKED <i>W.H. Sommer</i>	

B-10 1954

DESIGNER OF BRIDGES AND TRAFFIC STRUCTURES

APPROVED



FOR INFORMATION ONLY

FILE NAME = ...120-0876882-exist-bridge-plans-20.dgn
USER NAME = CFC...
PLOT SCALE = 48.000000' / IN.
PLOT DATE = 8/5/2010

DESIGNED -	REVISED -
DRAWN -	REVISED -
CHECKED -	REVISED -
DATE - / /	REVISED -

STATE OF ILLINOIS
DEPARTMENT OF TRANSPORTATION

SN 082-0030 PLANS
(ORIGINAL PLANS)

SCALE: SHEET NO. OF SHEETS STA. TO STA.

CB Coombe-Bloxdorf P.C.
- CIVIL ENGINEERS -
- STRUCTURAL ENGINEERS -
- LAND SURVEYORS -
Design Firm License No. 184-002703

F.A.P. RTE.	SECTION	COUNTY	TOTAL SHEETS	SHEET NO.
312	64-1VBR	ST. CLAIR	259	120
				CONTRACT NO. 76882

ILLINOIS FED. AID PROJECT