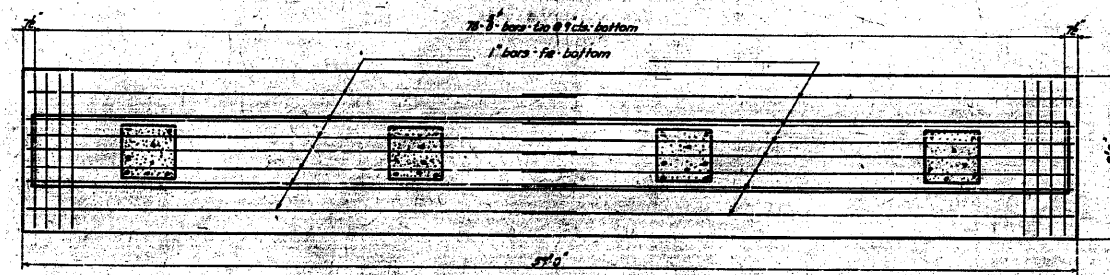
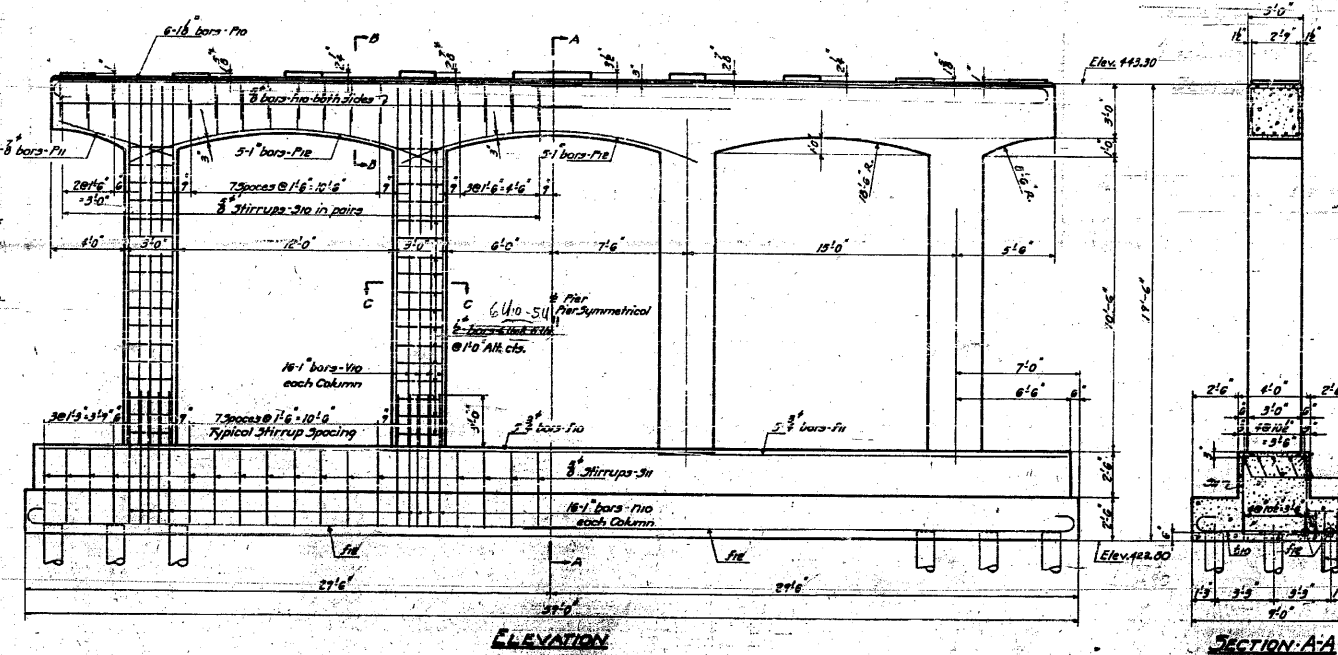
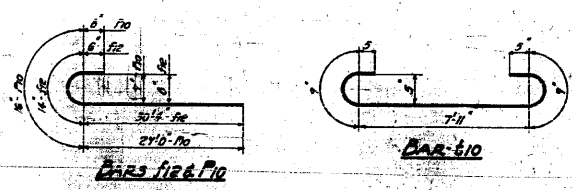
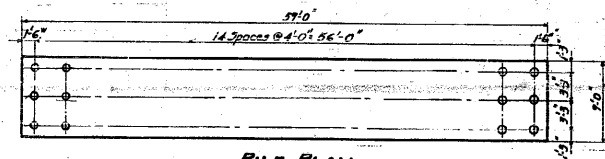
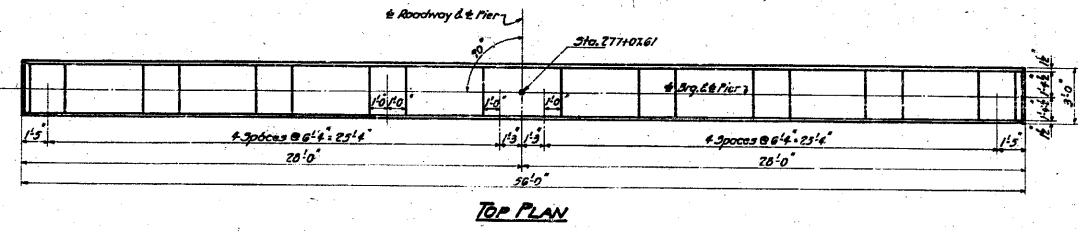
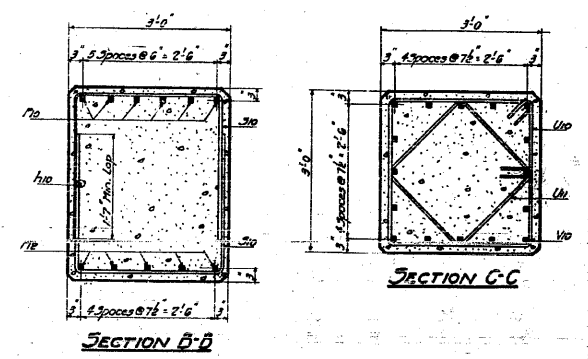


STATE OF ILLINOIS
DEPARTMENT OF PUBLIC WORKS & BUILDINGS
DIVISION OF HIGHWAYS

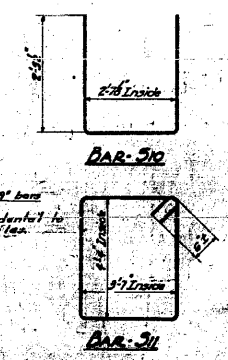
DESIGN NO.	SECTION	COUNTY	TOTAL SHEETS	SHEET NO.
9	64-1VBR	St. Clair	36	27
FED. ROAD DIST. NO. 1		SHEETS		
SHEETS		NO. SHEETS		



BILL OF MATERIAL

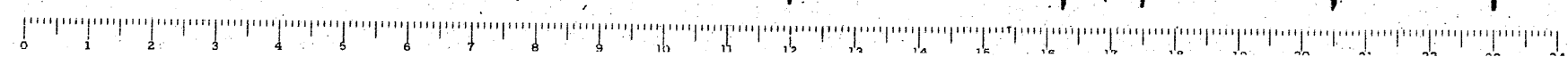
BAR NO.	NO.	SIZE	LENGTH
#10	5	3"	37'-3"
#11	5	3"	22'-3"
#12	14	1"	32'-0"
#13	4	3"	23'-6"
#14	64	1"	7'-6"
#15	12	1 1/2"	31'-0"
#16	6	3"	7'-0"
#17	13	1"	18'-0"
#18	60	3"	7'-6"
#19	32	3"	17'-0"
#20	74	3"	10'-3"
#21	24	2"	11'-6"
#22	20	2"	8'-6"
#23	64	1"	14'-0"

Class II Concrete Cu Yds. 1058
Reinforcement Bars lbs. 11,540
1/2" Metal Shell Piles Lin. Ft. 2,700
Class A Etc. for Struc. Cu Yds. 120



COMPUTED	W. J. Wiley	EXAMINED	B-10 1954
CHECKED	W. E. Hanson	PASSED	W. E. Hanson
DRAWN	W. J. Wiley	APPROVED	R. R. Cantelero
CHECKED	W. E. Hanson		
SPECIAL	ASSEMBLED		
	CHECKED		

PIER 1
GRADE SEPARATION
MICHIGAN TRAIL R.R.
ST. CLAIR COUNTY
E.B. BLOXDRF
CIVIL ENGINEER



FOR INFORMATION ONLY

FILE NAME =	USER NAME = CFC..	DESIGNED -	REVISED -
...121-D876882-exist-bridge-plans-21.dgn		DRAWN -	REVISED -
		CHECKED -	REVISED -
		DATE - / /	REVISED -

STATE OF ILLINOIS
DEPARTMENT OF TRANSPORTATION

SCALE:	SHEET NO.	OF	SHEETS	STA.	TO STA.

SN 082-0030 PLANS
(ORIGINAL PLANS)

CB Coombe-Bloxdorf P.C.
- CIVIL ENGINEERS -
- STRUCTURAL ENGINEERS -
- LAND SURVEYORS -
Design Firm License No. 184-002703

F.A.P. RTE.	SECTION	COUNTY	TOTAL SHEETS	SHEET NO.
312	64-1VBR	ST. CLAIR	259	121
				CONTRACT NO. 76882
ILLINOIS FED. AID PROJECT				